

ZAVOD ZA STATISTIKU CRNE GORE  
*STATISTICAL OFFICE OF MONTENEGRO*

GODINA LVIII / YEAR ( 58)

ISSN 0354-365X

**MJESEČNI STATISTIČKI PREGLED**  
***MONTHLY STATISTICAL REVIEW***

**2010**  
**2**

**PODGORICA, 2010**

IZDAJE I ŠTAMPA: Zavod za statistiku Crne Gore - MONSTAT  
*PUBLISHED AND PRINTED BY: Statistical Office of Montenegro - MONSTAT*

ODGOVARA: Radomir Đurović, direktor  
*RESPONSIBLE: Radomir Đurović, Director*

Podgorica, IV Proleterske br. 2, Tel: +382 20 230-811  
E-mail: [statistika@monstat.org](mailto:statistika@monstat.org). Web Site: [www.monstat.org](http://www.monstat.org)

CIP – Katalogizacija u publikaciji  
Centralna narodna biblioteka Crne Gore, Cetinje  
311 / 314

Mjesečni statistički pregled = Monthly  
Statistical review. Urednik Rajko Laković. – God.  
1, br.1 (1953) – . - Podgorica ( IV Proleterske br. 2)  
Zavod za statistiku Crne Gore – Monstat, 1992 ( Podgorica:  
Zavod za statistiku Crne Gore ) . – 30 cm

Mjesečno. – je nastavak: Mjesečni statistički pregled  
NR Crne Gore (Titograd ) = ISSN 0544-912X  
ISSN 0354-365X = Mjesečni statistički pregled (Podgorica)  
COBISS. CG ID 07622928

## UVOD

U MJESEČNOM STATISTIČKOM PREGLEDU Zavod za statistiku – MONSTAT objavljuje podatke za Crnu Goru. To su službeni statistički podaci koji se prikupljaju i obrađuju u skladu sa programom statističkih istraživanja i rezultat su rada zvaničnih statističkih službi.

Statistički podaci u MJESEČNOM STATISTIČKOM PREGLEDU prikazani su u godišnjim, kvartalnim i mjesečnim serijama i sistematizovani su u dva dijela. Godišnje serije obuhvataju tri do pet posljednjih uzastopnih godina. Kvartalne serije se odnose na kvartale u prošloj i tekućoj godini, a mjesečne serije obuhvataju period od trinaest mjeseci iz tekuće i prethodne godine. Ispod odgovarajućih tabela, gdje je potrebno, daju se kratka objašnjenja.

Pored podataka koje prikuplja i obrađuje Zavod za statistiku Crne Gore - MONSTAT, u ovom broju PREGLEDA su objavljeni i podaci Zavoda za zapošljavanje i Centralne Banke Crne Gore.

Podaci za tekuću godinu su obično prethodni, pa su moguće manje greške koje se postepeno ispravljaju u narednim brojevima i obilježavaju se zvjezdicom, u onom broju PREGLEDA u kojem je izvršena ispravka.

Sadržaj publikacije je prilagođen međunarodnim potrebama i obavezama u smislu primjene Klasifikacije djelatnosti (NACE Rev1), koja se primjenjuje od 01.01.2001. godine.

Od januara 2008. godine MJESEČNI STATISTIČKI PREGLED je obogaćen novim sadržajima i preveden je na engleski jezik.

## INTRODUCTION

*Statistical Office of Montenegro publishes statistical data for Montenegro in the MONTHLY STATISTICAL REVIEW. These are the official statistical data collected and processed according to the Programme of Statistical Surveys as the result of official statistical services.*

*Statistical data in the MONTHLY STATISTICAL REVIEW are presented in annual, quarterly and monthly series and are systemized in two parts. The Annual series of data cover 3-5 last consecutive years. Quarterly series refer to quarters in the previous and current year, and monthly series include period of thirteen months from the previous and current year. Where necessary, short explanations are given below the tables.*

*Besides data collected by the Statistical Office of Montenegro - MONSTAT, this issue of MONTHLY STATISTICAL REVIEW also publishes data from Employment Agency and Central Bank of Montenegro.*

*Data for the current year are usually preliminary, so minor errors are possible and are gradually corrected in the following numbers, and they are marked with the small star in the number of the MONTHLY STATISTICAL REVIEW where the correction has been made.*

*The contents of the publication is adapted to the international needs and obligations regarding the application of the Classification of Activities (NACE, REV1), used since January 2001.*

*Since January 2008, the MONTHLY STATISTICAL REVIEW contains new contents and has been translated into English language.*

## ZNACI

## SYMBOLS

nema pojave	=	—	=	No occurrence of event
ne raspolaze se podatkom	=	...	=	Data not available
podatak je manji od 0,5 date jedinice mjere	=	0	=	Value not zero but less than 0,5 of the unit of E
prosjeak	=	Ø	=	Average
ispravljen podatak	=	*	=	Corrected data
nepotpun, odnosno nedovoljno provjeren podatak	=	( )	=	Incomplete or insufficiently checked data



**SADRŽAJ**

<b>UVOD</b> .....	3
<b>SADRŽAJ</b> .....	5
<b>OPŠTI PREGLED INDEKSA</b>	
Kvartalni indeksi .....	7
Mjesečni indeksi .....	8
<b>STANOVNIŠTVO</b>	
Prirodno kretanje stanovništva .....	10
Prirodno kretanje stanovništva po opštinama .....	11
Kretanje stanovništva unutar Crne Gore po opštinama .....	12
<b>ZAPOSLENOST I ZARADE</b>	
Zaposleni po sektorima djelatnosti .....	13
Zaposleni po opštinama .....	14
Nezaposlena lica .....	15
Prosječne zarade po sektorima djelatnosti .....	16
Prosječne zarade bez poreza i doprinosa po sektorima djelatnosti .....	17
Indeksi prosječnih zarada po sektorima djelatnosti .....	18
Indeksi prosječnih zarada bez poreza i doprinosa po sektorima djelatnosti .....	19
Prosječne zarade po opštinama .....	20
Prosječne zarade bez poreza i doprinosa po opštinama .....	21
<b>CIJENE</b>	
Indeksi cijena proizvođača industrijskih proizvoda .....	22
Indeksi potrošačkih cijena po grupama proizvoda .....	24
Indeksi potrošačkih cijena .....	26
<b>ŠUMARSTVO</b> .....	27
<b>INDUSTRIJA</b>	
Indeksi industrijske proizvodnje po sektorima .....	28
Indeksi industrijske proizvodnje po podsektorima .....	29
<b>GRADEVINARSTVO</b>	
Vrijednost izvršenih i ugovorenih radova, broj zaposlenih i izvršeni efektivni časovi .....	31
<b>SPOLJNA TRGOVINA</b>	
Izvoz i uvoz po zemljama .....	32
Izvoz i uvoz robe .....	33
<b>UNUTRAŠNJA TRGOVINA</b>	
Promet u trgovini na malo .....	36
Prodaja i otkup proizvoda poljoprivrede, šumarstva i ribarstva .....	37
<b>UGOSTITELJSTVO</b>	
Promet u ugostiteljstvu .....	38
<b>TURIZAM</b>	
Dolasci i noćenja turista po zemljama i vrsti mjesta .....	39
Dolasci i noćenja gostiju po vrstama turističkih mjesta .....	40
Broj dolazaka i noćenja turista .....	40
<b>SAOBRAĆAJ, SKLADIŠTENJE I VEZE</b>	
Željeznički saobraćaj .....	41
Drumski saobraćaj .....	42
Vazdušni saobraćaj .....	43
Pomorski saobraćaj .....	44
PTT saobraćaj .....	44
<b>MONETARNI AGREGATI I PLATNI BILANS</b> .....	45
<b>METODOLOŠKA OBJAŠNJENJA</b> .....	47

**CONTENTS**

<b>INTRODUCTION .....</b>	<b>3</b>
<b>CONTENTS .....</b>	<b>5</b>
<b>SUMMARY OF INDICES</b>	
<i>Quarterly indices .....</i>	<i>7</i>
<i>Monthly indices .....</i>	<i>8</i>
<b>POPULATION</b>	
<i>Natural population changes .....</i>	<i>10</i>
<i>Natural population changes by municipality .....</i>	<i>11</i>
<i>Migrations inside Montenegro by municipality .....</i>	<i>12</i>
<b>EMPLOYMENT AND WAGES</b>	
<i>Employees by activity sectors .....</i>	<i>13</i>
<i>Employees by municipality .....</i>	<i>14</i>
<i>Unemployed persons .....</i>	<i>45</i>
<i>Average wages by activity sectors .....</i>	<i>16</i>
<i>Average wages without taxes and contributions by activity sector .....</i>	<i>17</i>
<i>Indices of average wages by activity sector .....</i>	<i>18</i>
<i>Indices of average wages without taxes and contributions by activity sector .....</i>	<i>19</i>
<i>Average wages by municipality .....</i>	<i>20</i>
<i>Average wages without taxes and contributions by municipality .....</i>	<i>21</i>
<b>PRICES</b>	
<i>Producers price indices for industrial products .....</i>	<i>22</i>
<i>Retail by groups of products .....</i>	<i>24</i>
<i>Consumer prices index .....</i>	<i>26</i>
<b>FORESTRY</b>	<b>27</b>
<b>INDUSTRY</b>	
<i>Indices of industrial production by sectors .....</i>	<i>28</i>
<i>Indices of industrial production by subsectors .....</i>	<i>29</i>
<b>CONSTRUCTION</b>	
<i>Value of finalized and ordered works, number of employees and finalized effective hours .....</i>	<i>31</i>
<b>EXTERNAL TRADE</b>	
<i>Exports and imports by countries .....</i>	<i>32</i>
<i>Exports and imports of goods .....</i>	<i>33</i>
<b>DOMESTIC TRADE</b>	
<i>Turnover in retail trade .....</i>	<i>40</i>
<i>Sale and buying out of products from agriculture, forestry and fishery .....</i>	<i>41</i>
<b>CATERING</b>	
<i>Turnover in catering .....</i>	<i>42</i>
<b>TOURISM</b>	
<i>Tourist arrivals and tourist overnight stays by country and type of resort .....</i>	<i>43</i>
<i>Tourist arrivals and tourist overnight stays by type of resort .....</i>	<i>44</i>
<i>Tourist arrivals and tourist overnight stays .....</i>	<i>44</i>
<b>TRANSPORT, STORAGE AND COMMUNICATIONS</b>	
<i>Railway transport .....</i>	<i>45</i>
<i>Road transport .....</i>	<i>46</i>
<i>Air transport .....</i>	<i>47</i>
<i>Marine transport .....</i>	<i>48</i>
<i>Postal, telegraph and telephone (PTT) communications .....</i>	<i>48</i>
<b>MONETARY AGGREGATES AND BALANCE OF PAYMENTS .....</b>	<b>49</b>
<b>METHODOLOGICAL EXPLANATION .....</b>	<b>51</b>

## OPŠTI PREGLED INDEKSA / SUMMARY OF INDICES

## Kvartalni indeksi / Quarterly indices

	<b>2008 2007</b>	<b>Kvartali / Quarters</b>							
		<b>IV 2009 IV 2008</b>	<b>I 2009 I 2008</b>	<b>II 2009 II 2008</b>	<b>III 2009 III 2008</b>	<b>II 2009 I 2009</b>	<b>III 2009 II 2009</b>	<b>IV 2009 III 2009</b>	
<b>OSTANOVNIŠTVO <sup>1)</sup></b>									<b>POPULATION <sup>1)</sup></b>
Živorodeni	104.4	105.3	95.3	100.3	102.8	105.5	116.6	93.7	Liveborn
Umrli	92.8	107.0	86.9	98.4	102.4	102.3	103.0	104.0	Deaths
Prirodni priraštaj	141.8	91.2	122.8	115.2	98.7	113.7	147.6	77.3	Natural increase
Zaključeni brakovi	87.9	120.9	125.4	101.7	100.6	110.6	134.4	88.9	Marriages
Razvedeni brakovi	76.4	71.7	106.5	35.2	145.4	65.2	327.9	70.2	Divorces
<b>ZAPOSLENOST I ZARADE</b>									<b>EMPLOYMENT AND EARNINGS</b>
Broj zaposlenih	106.3	102.6	105.2	105.5	105.8	103.1	101.7	97.3	Number of employees
Lica koja traže zaposlenje	85.8	103.3	92.9	93.5	95.5	95.6	97.2	109.0	Persons looking for employm.
Nominalne zarade bez poreza i doprinosa	123.1	106.7	118.5	113.0	108.0	100.1	98.1	100.6	Nominal wages without taxes and contributions
Realne zarade bez poreza i doprinosa	114.6	104.8	112.6	108.3	105.6	99.0	98.3	100.4	Real wages without taxes and contributions
<b>CIJENE</b>									<b>PRICES</b>
Indeks potrošačkih cijena	107.4	101.8	105.2	104.3	102.3	101.1	99.8	100.2	Consumer prices index
Hrana i bezalkoholna pića	108.2	100.7	105.7	104.2	102.6	100.8	98.5	99.9	Food and non alch. beverages
Odjeća i obuća	100.7	100.2	101.4	101.0	100.5	99.5	99.8	101.0	Clothes and footwear
Pokućstvo i oprema za kuću	100.8	93.6	100.8	98.8	96.0	98.1	98.4	97.9	Household furnishing
Cijene proizvođača ind.proizvoda	114.0	93.9	103.6	96.7	90.7	98.5	98.3	101.6	Produc. price ind. for ind.prod.
<b>INDUSTRIJA</b>									<b>INDUSTRY</b>
Indeksi fizičkog obima	98.0	63.7	86.4	71.9	47.8	83.2	73.2	130.8	Indices of physical scope
<b>GRAĐEVINARSTVO</b>									<b>CONSTRUCTION</b>
Vrijednost izvedenih građevinskih radova	145.7	79.2	90.9*	72.7*	76.4	134.9*	109.5	95.9	Value of performed construction works
Izvršeni efektivni časovi na gradilištu	120.7	75.1	88.2*	83.7*	77.2	110.6*	95.9	92.3	Performed effective hours at the construction site
<b>SPOLJNA TRGOVINA</b>									<b>EXTERNAL TRADE</b>
Izvoz	88.9	88.2	75.8	43.1	67.7	75.7	143.1	99.9	Export
Uvoz	121.9	81.1	65.9	58.4	60.0	117.4	105.9	101.5	Import
<b>UNUTRAŠNJA TRGOVINA</b>									<b>DOMESTIC TRADE</b>
Promet u trgovini na malo	116	92.4	100.6	87.3	87.2	118.3	122.2	83.4	Turnover in retail trade
<b>UGOSTITELJSTVO</b>	105.0	103.4	96.6	90.5	98.9	265.4	240.5	25.5	<b>CATERING</b>
<b>TURIZAM</b>									<b>TOURISM</b>
Posjete turista	106.4	86.6	85.7	94.9	102.8	387.1	396.5	7.2	Visits of tourists
Noćenja turista	110.3	68.4	83.6	92.7	95.2	477.4	475.2	4.4	Overnight stays of tourists
<b>SAOBRAĆAJ, SKLADIŠTENJE I VEZE</b>									<b>TRANSPORT, STORAGE AND COMMUNICATIONS</b>
Drumski-prevoz robe	149.3	158.4	91.7	127.6	153.7	152.0	95.8	96.5	Road - transport of goods
Prevoz putnika	87.3	61.8	71.8	110.4	85.8	155.5	103.0	56.3	Transport of passengers
Željeznički – prevoz robe	99.4	58.5	66.6	31.1	59.0	63.1	135.4	108.4	Railway - transport of goods
Prevoz putnika	113.6	68.5	86.7	85.2	78.2	133.3	160.4	49.7	Transport of passengers
Vazdušni – prevoz robe	112.9	241.8	40.6	63.0	100.9	102.4	114.5	290.1	Air – transport of goods
Prevoz putnika	108.2	81.7	85.5	79.7	82.9	197.9	192.7	27.8	Transport of passengers
Pomorski– Prevoz robe – t milje	86.3	81.8	77.3	64.2	80.3	83.4	343.1	36.3	Marine- transport of goods – t miles

## OPŠTI PREGLED INDEKSA / SUMMARY OF INDICES

## Mjesečni indeksi / Monthly indices

Ø 2009 = 100

	2009 2008	I 2010 XII 2009	I- 2010 I -2009	2009				
				I	II	III	IV	V
<b>STANOVNIŠTVO <sup>1)</sup></b>								
Živorodeni	101.0	...	...	92.7	88.3	94.7	85.1	100.4
Umrli	98.3	...	...	80.3	90.9	119.8	101.0	90.0
Prirodni priraštaj	103.8	...	...	119.1	83.0	41.5	51.6	120.0
Zaključeni brakovi	112.6	...	...	89.3	91.0	88.6	82.1	119.3
Razvedeni brakovi	75.9	...	...	52.0	65.9	111.0	20.8	69.4
<b>ZAPOSLENOST I ZARADE</b>								
Broj zaposlenih	104.8	101.4	101.8	97.2	97.4	98.0	99.1	100.0
Lica koja traže zaposlenje	96.2	102.9	107.4	101.9	103.2	102.8	100.8	97.9
Nominalne zarade bez poreza i doprinosa	111.3	100.2	100.2	101.5	100.9	99.6	100.4	101.1
Realne zarade bez poreza i doprinosa	107.6	100.5	99.4	102.3	101.0	99.8	100.2	100.8
<b>CIJENE</b>								
Indeks potrošačkih cijena	103.4	99.7	100.8	99.2	99.9	99.8	100.2	100.3
Hrana i bezalkoholna pića	103.3	100.3	99.3	100.1	101.0	101.2	101.8	102.0
Odjeća i obuća	100.8	100.2	99.9	100.5	100.1	100.2	99.9	99.8
Pokućstvo i oprema za kuću	97.3	100.8	92.4	104.8	104.1	103.2	102.4	100.5
Cijene proizvođača industrijskih proizv.	96.1	97.6	93.6	104.0	103.1	100.7	101.0	100.2
<b>ŠUMARSTVO</b>								
Indeksi fizičkog obima	75.8	17.3	129.0	10.7	36.3	22.0	89.4	114.9
<b>INDUSTRIJA</b>								
Indeksi fizičkog obima	67.8	113.5	88.7	137.1	141.2	139.5	112.1	94.6
<b>SPOLJNA TRGOVINA</b>								
Izvoz	66.5	56.7	42.6	88.1	57.5	57.8	41.4	35.2
Uvoz	65.4	47.7	71.1	49.4	56.1	62.2	62.1	65.0
<b>UNUTRAŠNJA TRGOVINA</b>								
Promet robe na malo	91.02	67.1	90.5	81.4	84.0	82.7	96.1	94.7
Prodaja i otkup proizvoda poljoprivrede, šumarstva i ribarstva	104.4	50.0	70.3	74.1	60.9	61.6	70.6	68.0
<b>UGOSTITELJSTVO</b>								
Promet u ugostiteljstvu	93.0	89.3	102.4	32.5	36.7	39.0	47.4	114.2
<b>TURIZAM</b>								
Posjete turista	101.6	101.0	80.8	17.5	19.9	19.1	28.6	74.9
Noćenja turista	96.9	120.1	67.7	13.4	14.1	13.2	19.6	57.2
<b>SAOBRAĆAJ, SKLADIŠT. I VEZE</b>								
Drumski – prevoz robe	130.8	...	...	59.1	85.4	85.4	80.1	153.5
Prevoz putnika	82.6	...	...	92.2	88.9	56.1	93.7	144.3
Željeznički – prevoz robe	54.7	125.8	104.5	124.3	97.1	99.5	75.9	37.7
Prevoz putnika	79.4	93.2	66.8	96.6	54.4	84.6	78.6	84.6
Vazdušni - prevoz putnika	86.2	96.0	114.0	52.5	44.6	55.7	62.2	87.8
Pomorski- prevoz robe – t milje	77.6	83.3	82.2	67.0	60.4	81.1	49.3	72.7

<sup>1)</sup> Prethodni podaci<sup>1)</sup> Preliminary data



## OPŠTI PREGLED INDEKSA/ SUMMARY OF INDICES

## Mjesečni indeksi / Monthly indices

2009							2010	
VI	VII	VIII	IX	X	XI	XII	I	
								<b>POPULATION <sup>1)</sup></b>
103.5	119.7	102.0	114.4	110.9	97.4	106.7	...	Liveborn
101.1	95.2	107.6	95.0	108.9	100.3	100.7	...	Deaths
105.4	169.3	86.7	152.9	111.8	88.1	116.3	...	Natural increase
96.1	125.1	138.0	136.7	133.9	116.3	110.1	...	Marriages
59.0	131.8	65.9	291.3	114.5	54.8	117.4	...	Divorces
								<b>EMPLOYMENT AND EARNINGS</b>
102.7	102.6	102.8	101.6	100.8	100.3	97.5	98.9	Number of employees
95.6	95.3	94.5	96.2	101.2	104.3	106.3	109.4	Persons looking for employment
100.6	98.7	99.6	98.1	98.5	98.5	101.5	101.7	Nominal wages without taxes and contributions
100.7	99.4	99.1	97.9	98.3	98.3	101.2	101.7	Real wages without taxes and contributions
								<b>PRICES</b>
99.9	99.3	100.5	100.2	100.2	100.2	100.3	100.0	Consumer prices index
99.9	98.7	99.3	99.2	99.0	98.7	99.1	99.4	Food and non alch. beverages
99.7	99.6	99.6	99.5	100.5	100.5	100.1	100.4	Clothes and footwear
100.2	99.8	98.6	96.9	96.7	96.6	96.2	96.9	Household furnishing
98.5	96.9	97.6	98.6	99.3	99.7	100.4	97.4	Produc. price ind. for ind. prod.
								<b>FORESTRY</b>
140.5	139.0	186.4	182.9	106.8	91.4	79.7	13.8	Indices of physical scope
								<b>INDUSTRY</b>
84.2	73.8	66.7	72.3	86.4	85.0	107.1	121.6	Indices of physical scope
								<b>EXTERNAL TRADE</b>
77.3	95.6	71.8	52.8	77.0	76.8	66.2	42.6	Export
69.7	70.5	68.0	70.0	72.4	65.6	73.6	71.1	Import
								<b>INTERNAL TRADE</b>
102.8	125.2	131.3	102.3	100.2	89.4	109.9		Turnover of retail trade goods
100.2	105.7	140.3	114.3	117.9	181.9	104.3	52.1	Sales and buy out of products in agriculture, forestry and fishing
								<b>CATERING</b>
125.5	200.6	251.0	212.6	61.3	41.9	37.3	33.3	Turnover in catering
								<b>TOURISM</b>
113.5	304.5	397.3	162.1	33.6	14.8	14.1	14.1	Visits of tourists
117.8	313.7	466.3	144.1	22.8	10.1	7.7	9.1	Overnight stays of tourists
								<b>TRANSPORT, STORAGE AND COMMUNIC.</b>
116.0	113.3	102.5	119.0	66.5	96.0	123.1		Road - transport of goods
130.8	149.2	129.8	101.0	80.7	68.4	64.9		Transport of passengers
88.9	80.4	104.8	139.5	137.1	111.5	103.3	130.0	Railway - transport of goods
151.1	169.2	169.2	87.0	72.5	61.4	90.7	84.6	Transport of passengers
152.5	205.7	231.8	145.5	45.2	54.3	62.4	59.9	Air - transport of passengers
51.5	230.3	244.1	126.0	80.6	71.8	66.1	52.9	Marine- transport of goods - t miles

<sup>1)</sup> Preliminary data

**PRIRODNO KRETANJE STANOVNIŠTVA**  
**NATURAL POPULATION CHANGES**

**Crna Gora / Montenegro**

	Živorodeni <i>Live births</i>			Umrli <i>Deaths</i>			Vitalni indeks  <i>Vital index</i>	Prirodni priraštaj  <i>Natural increase</i>	Brakovi / <i>Marriages</i>	
	<i>ukupno</i> <i>Total</i>	<i>muško</i> <i>Male</i>	<i>žensko</i> <i>Female</i>	<i>ukupno</i> <i>Total</i>	<i>muško</i> <i>Male</i>	<i>žensko</i> <i>Female</i>			sklopljeni <i>New marriages</i>	razvedeni <i>Divorces</i>
2004	7849	4030	3819	5707	3011	2696	1.38	2142	3440	505
2005	7352	3883	3469	5839	3082	2757	1.26	1513	3291	499
2006	7531	3969	3562	5968	3092	2876	1.26	1563	3462	470
2007	7834	4136	3698	5979	3048	2931	1.31	1855	4005	453
2008	8258	4313	3945	5708	2982	2726	1.45	2550	3445	460
2009 <sup>1)</sup>										
I	632	337	295	371	186	185	1.70	261	262	15
II	602	329	273	420	208	212	1.43	182	267	19
III	645	343	302	554	268	286	1.16	91	260	32
IV	580	321	259	467	219	248	1.24	113	241	6
V	691	385	306	428	222	206	1.61	263	350	20
VI	712	376	336	481	259	222	1.48	231	282	17
VII	824	440	384	453	244	209	1.82	371	367	38
VIII	702	364	338	512	285	227	1.37	190	405	19
IX	787	412	375	452	238	214	1.74	335	401	84
X	763	383	380	518	274	244	1.47	245	393	33
XI	670	364	306	477	247	230	1.40	193	334	21
XII	734	381	353	479	235	244	1.53	255	316	45
I 2010/I 2009	...	...	...	...	...	...	...	...	...	...

<sup>1)</sup> Prethodni podaci<sup>1)</sup> Preliminary data

**PRIRODNO KRETANJE STANOVNIŠTVA PO OPŠTINAMA**  
**NATURAL POPULATION CHANGES BY MUNICIPALITY**  
**I – XII 2009. god.<sup>1)</sup>**

	Živorodeni / Live births			Umrli / Deaths			Vitalni indeks <i>Vital index</i>	Prirodni priraštaj <i>Natural increase</i>	Brakovi / Marriages	
	ukupno <i>Total</i>	muški <i>Male</i>	ženski <i>Female</i>	ukupno <i>Total</i>	muški <i>Male</i>	ženski <i>Female</i>			sklopljeni <i>New marriages</i>	razvedeni <i>Divorces</i>
<b>CRNA GORA MONTENEGRO</b>	8342	4435	3907	5673	2915	2758	1.47	2669	3878	349
ANDRIJEVICA	40	19	21	61	30	31	0.66	-21	14	-
BAR	578	317	261	373	192	181	1.55	205	305	57
BERANE	489	274	215	398	214	184	1.23	91	213	29
BIJELO POLJE	699	362	337	488	261	227	1.43	211	279	3
BUDVA	306	161	145	92	51	41	3.33	214	107	-
CETINJE	177	92	85	193	106	87	0.92	-16	124	-
DANILOVGRAD	181	90	91	164	84	80	1.10	17	76	19
HERCEG NOVI	367	199	168	287	134	153	1.28	80	186	37
KOLAŠIN	74	33	41	114	50	64	0.65	-40	44	2
KOTOR	263	142	121	250	122	128	1.05	13	100	17
MOJKOVAC	83	41	42	116	57	59	0.72	-33	33	-
NIKŠIĆ	855	492	363	717	375	342	1.19	138	422	29
PLAV	155	84	71	117	63	54	1.32	38	77	-
PLJEVLJA	256	146	110	357	197	160	0.72	-101	142	23
PLUŽINE	22	8	14	56	26	30	0.39	-34	23	-
PODGORICA	2836	1485	1351	1383	680	703	2.05	1453	1341	66
ROŽAJE	470	242	228	124	72	52	3.79	346	174	40
ŠAVNIK	16	9	7	29	12	17	0.55	-13	16	-
TIVAT	187	87	100	141	76	65	1.33	46	66	2
ULCINJ	255	138	117	171	97	74	1.49	84	125	22
ŽABLJAK	33	14	19	42	16	26	0.79	-9	11	3

<sup>1)</sup> Prethodni podaci<sup>1)</sup> Preliminary data

**KRETANJE STANOVNIŠTVA UNUTAR CRNE GORE PO OPŠTINAMA**  
**MIGRATIONS INSIDE MONTENEGRO BY MUNICIPALITY**

**I 2010. god.<sup>1)</sup>**

<b>OPŠTINE / MUNICIPALITIES</b>	<b>DOSELJENI / MOVED IN</b>	<b>ODESJENI / MOVED OUT OF</b>	<b>SALDO / BALLANCE</b>
<b>UKUPNO / TOTAL</b>	<b>151</b>	<b>151</b>	<b>0</b>
ANDRIJEVICA	7	2	5
BAR	22	7	15
BERANE	10	14	-4
BIJELO POLJE	5	16	-11
BUDVA	4	2	2
CETINJE	3	3	0
DANILOVGRAD	7	9	-2
HERCEG NOVI	8	6	2
KOLAŠIN	0	2	-2
KOTOR	4	3	1
MOJKOVAC	4	8	-4
NIKŠIĆ	13	15	-2
PLAV	4	5	-1
PLJEVLJA	2	9	-7
PLUŽINE	0	7	-7
PODGORICA	42	18	24
ROŽAJE	3	12	-9
SAVNIK	0	4	-4
TIVAT	8	3	5
ULCINJ	5	5	0
ŽABLJAK	0	1	-1

<sup>1)</sup> Prethodni podaci

<sup>1)</sup> Preliminary data

**ZAPOSLENI PO SEKTORIMA DJELATNOSTI**  
**EMPLOYEES BY ACTIVITY SECTORS**

	Ukupno <i>Total</i>	PO SEKTORIMA / <i>BY ACTIVITY SECTORS</i>						
		poljoprivreda šumarstvo i vodoprivreda <i>Agriculture, forestry and water supply</i>	ribarstvo <i>Fishing</i>	vadenje ruda i kamenja <i>Mining and quarrying</i>	prerađivačka industrija <i>Manufacturing</i>	proizvodnja elekt. energije <i>Electricity supply</i>	građevinarstvo <i>Construction</i>	trgovina na veliko i malo, opravka <i>Wholesale and retail trade, repair</i>
Ø 2006	150800	2607	115	4159	26065	5627	6853	29602
Ø 2007	156408	2586	112	3753	25697	5594	6647	30750
Ø 2008	166221	2651	129	3721	24335	6042	8831	31854
Ø 2009	174152	2700	119	3178	21824	5456	9997	36117
2009 <sup>1)</sup>								
I	169305	2724	129	3626	23440	6153	9569	32147
II	169670	2889	129	3478	23231	5736	9990	32601
III	170607	2617	125	3182	22944	5511	9303	35153
IV	172549	2617	123	3162	22835	5501	9915	35517
V	174218	2657	123	3115	22412	5353	10489	35693
VI	178839	2654	113	3103	22449	5523	10687	36180
VII	178622	2630	115	3097	21929	5552	10340	36139
VIII	179016	2740	119	3197	21300	5358	10278	37823
IX	176936	2734	114	3081	20807	5273	9998	38264
X	175468	2717	114	3081	20694	5273	9965	38226
XI	174736	2720	113	3001	20427	5267	9914	38225
XII	169859	2710	111	3017	19419	4972	9520	37436
2010								
I	172301	2729	111	2927	19424	5207	10080	38339
<b>I 2010/I 2009</b>	101.8	100.2	86.0	80.7	82.9	84.6	105.3	119.3

/nastavak/

/ continued /

	PO SEKTORIMA / <i>BY ACTIVITY SECTORS</i>							
	hoteli i restorani <i>Hotels and restaurants</i>	saobraćaj, skladištenje i veze <i>Transport, storage and communi-cations</i>	finansijsko posredovnje <i>Financial activities</i>	aktivnosti u vezi s nekretninama <i>Real estate activities, renting</i>	državna uprava i obav. socijalno osiguranje <i>Public administration and social insurance</i>	obrazo- vanje <i>Education</i>	zdravstveno i socijalno osiguranje <i>Health and social work</i>	ostale komu- nalne, društ. i lične usluge <i>Other community, social &amp; pers. service activities</i>
Ø 2006	10928	12133	3114	5905	10345	12846	12012	8489
Ø 2007	11307	11358	3143	5354	17575	12687	12004	7841
Ø 2008	14641	12798	3476	5631	18643	12892	12356	8221
Ø 2009	16678	13858	3748	7356	18860	12992	12238	9031
2009 <sup>1)</sup>								
I	15432	13638	3603	5966	18764	12969	12606	8539
II	16046	13908	3426	6139	18717	13108	12118	8154
III	14796	13923	3623	6670	18837	13069	12142	8712
IV	15600	14069	3603	6799	18804	13070	12184	8750
V	16861	14274	3594	6759	18906	13092	12164	8726
VI	19862	14767	3644	7017	18824	12993	12213	8810
VII	20049	14497	3718	7709	18845	12919	12205	8878
VIII	19062	13640	3803	8050	18946	12938	12245	8517
IX	16940	13475	4013	8335	19005	13023	12282	9592
X	15777	13425	4008	8314	18983	13013	12296	9582
XI	15364	13399	4013	8350	18998	13005	12309	9631
XII	14351	13275	3925	8163	18691	12706	12089	9474
2010								
I	14627	13437	3959	8292	18686	12755	12183	9545
<b>I 2010/I 2009</b>	94.8	98.5	109.9	139.0	99.6	98.3	96.6	111.8

<sup>1)</sup> Vidi metodološka objašnjenja na strani 47<sup>1)</sup> See methodological explanation on page 47

## ZAPOSLENI PO OPŠTINAMA / EMPLOYEES BY MUNICIPALITY

	Opštine / Municipalities										
	Andrijevica	Bar	Berane	Bijelo Polje	Budva	Danilovgrad	Žabljak	Kolašin	Kotor	Mojkovac	Nikšić
Ø 2006	540	11105	5218	7316	9308	2541	805	1410	5547	1495	17616
Ø 2007	528	11125	5803	8060	8323	2496	937	1591	5983	1503	17481
Ø 2008	537	11876	6092	8628	8951	2969	986	1728	6378	1638	18312
Ø 2009	536	12283	6077	8643	10660	3158	999	1846	6723	1723	18682
2009 <sup>1)</sup>											
I	534	11879	6088	8850	8674	3082	1034	1842	6470	1720	18761
II	536	11911	6120	8852	8958	3086	983	1847	6451	1681	18684
III	536	11933	6151	8790	9205	3094	1004	1831	6495	1652	18803
IV	533	12251	6156	8868	9920	3120	987	1836	6546	1701	18907
V	537	12221	6131	8704	10546	3111	1004	1845	6690	1692	18679
VI	537	13056	6083	8544	12459	3148	1003	1857	7011	1781	18758
VII	537	12892	6086	8639	12334	3182	1007	1865	6983	1777	18738
VIII	540	12959	6040	8610	12545	3206	1023	1857	7000	1775	18740
IX	540	12460	6034	8563	11647	3231	998	1868	6903	1802	18745
X	543	12314	6025	8491	10823	3192	984	1839	6826	1802	18758
XI	535	12345	6079	8480	10664	3236	981	1815	6717	1781	18625
XII	525	11180	5935	8327	10147	3203	976	1844	6579	1512	17987
2010											
I	526	12502	6073	8409	10224	3202	995	1861	6655	1654	18420
I 2010/I 2009	98.5	105.2	99.8	95.0	117.9	103.9	96.2	101.0	102.9	96.2	98.2

/nastavak/

/ continued /

	Opštine / Municipalities									
	Plav	Plužine	Pljevlja	Podgorica	Rožaje	Tivat	Ulcinj	Herceg Novi	Cetinje	Šavnik
Ø 2006	1470	913	7233	53103	3292	2940	3994	10130	4545	279
Ø 2007	1425	952	7100	56118	3148	3632	3873	11149	4890	291
Ø 2008	1411	938	7286	61032	3064	3755	4185	11763	4396	296
Ø 2009	1403	937	7284	64736	3187	4129	4400	12254	4197	295
2009 <sup>1)</sup>										
I	1375	939	7264	63343	3133	3833	4273	11720	4204	287
II	1337	938	7317	63499	3158	3886	4310	11734	4099	283
III	1447	927	7321	63888	3164	3846	4248	11777	4216	279
IV	1394	927	7293	64364	3210	4020	4299	11870	4063	284
V	1377	945	7358	64800	3243	4213	4353	12271	4211	287
VI	1387	948	7310	64996	3244	4279	4709	13204	4241	284
VII	1389	916	7307	65329	3193	4402	4498	12996	4238	314
VIII	1432	959	7304	65408	3186	4406	4518	12950	4240	318
IX	1431	953	7327	65469	3199	4292	4465	12474	4218	317
X	1427	948	7331	65588	3211	4191	4431	12214	4230	300
XI	1424	931	7295	65360	3240	4186	4393	12093	4262	294
XII	1419	907	6982	64789	3068	3999	4303	11744	4142	291
2010										
I	1429	912	7194	64249	3122	4060	4347	11921	4246	300
I 2010/I 2009	103.9	97.1	99.0	101.4	99.6	105.9	101.7	101.7	101.0	104.5

<sup>1)</sup> Vidi metodološka objašnjenja na strani 47<sup>1)</sup> See methodological explanation on page 47

NEZAPOSLENA LICA<sup>1)</sup> / UNEMPLOYED PERSONS<sup>1)</sup>

	Stanje krajem perioda / Situation at the end of the period						U toku perioda / In the middle of the period		
	lica koja traže zaposlenje <sup>2)</sup> ukupno <i>Persons looking for job Total</i>	nezaposlena lica koja prvi put traže zaposlenje <i>Unemployed persons first time looking for job</i>	nezaposlena lica bez kvalifikacija <i>Unqualified unemployed persons</i>	lica koja primaju novčanu naknadu <sup>3)</sup> <i>Persons receiving unemployment benefits</i>	nezaposlene žene <i>unemployed women</i>		prijavilo se za zapošljavanje <sup>4)</sup> <i>Reported for employment</i>	zaposleni prema evidenciji Zavoda za zapošljavanje Crne Gore <i>Employees according to the records of Employment Agency of Montenegro</i>	prestanak vođenja evidencije <sup>5)</sup> <i>Records stopped to be kept</i>
					Svega <i>Total</i>	bez kvalifikacija <i>Unqualified</i>			
Ø 2006	43190	14855	11550	7833	19949	4720	2630	1955	3581
Ø 2007	34396	10069	8838	8654	15513	3414	2187	2658	2911
Ø 2008	29514	7375	7823	9507	13193	2925	2090	2261	2386
2008									
I	31323	8137	8056	9222	13864	2938	1947	1853	2139
II	31469	8228	8075	9432	13954	2945	2176	2662	2211
III	31258	8047	8088	9661	13764	2903	2105	2614	2531
IV	30270	7655	7890	9865	13348	2866	1601	2261	2741
V	30021	7739	8149	9630	13276	3034	2639	2366	2847
VI	29088	7444	7966	9416	12922	2998	1787	3147	2776
VII	28660	6997	7758	7024	12840	2939	1868	3482	2272
VIII	28117	6789	7505	9826	12721	2830	1457	2465	2028
IX	28276	6976	7510	8877	12892	2883	2519	2389	2318
X	28666	6943	7593	10125	13064	2894	2855	1489	2435
XI	28645	6885	7629	10537	12913	2932	2136	1421	2156
XII	28378	6664	7659	10474	12758	2934	1900	985	2175
2009									
I	28921	6624	7839	11983	12962	3007	2123	720	1684
II	29305	6724	7952	13133	13079	3041	2290	1179	1922
III	29170	6733	7870	12294	12905	2932	2447	1345	2636
IV	28616	6500	7650	12144	12678	2868	1753	1456	2277
V	27785	6115	7444	12265	12306	2748	1624	1616	2507
VI	27133	5929	7135	12644	12038	2638	1807	1950	2545
VII	27048	6012	6973	12530	12000	2535	1915	1504	2021
VIII	26844	6023	6838	12273	12096	2510	1462	841	1740
IX	27313	6208	6803	12387	12512	2548	2279	1089	1872
X	28731	6442	7196	12372	13200	2691	2704	1354	1586
XI	29607	6651	7429	12975	13596	2776	2426	891	1669
XII	30169	6618	7573	12408	13704	2786	2393	787	1993
2010									
I	31055	6550	7792	13102	13986	2857	2113	549	1440
I 2010/I 2009	107.4	98.9	99.4	109.3	107.9	95.0	99.5	76.3	85.5

<sup>1)</sup> SOURCE: Employment Agency of Montenegro<sup>1)</sup> IZVOR: Zavod za zapošljavanje Crne Gore<sup>2)</sup> Shodno članu 4 Zakona o zapošljavanju („Sl.list RCG”, br. 5/02 )<sup>3)</sup> Shodno članu 48 Zakona o zapošljavanju<sup>4)</sup> Nezaposlene osobe koje su se tokom izvještajnog mjeseca prijavile na evidenciju Zavoda za zapošljavanje<sup>5)</sup> Shodno članu 86 Zakona o zapošljavanju<sup>2)</sup> According to the article 4 of the Law on Employment („Official Gazzete of RoM”, No. 5/02 and 79/04)<sup>3)</sup> According to the Article 48 of the Law on Employment<sup>4)</sup> Unemployed persons who in the reference month reported to the records of the Employment Agency of Montenegro<sup>5)</sup> According to the Article 86 of the Law on Employment

**PROSJEČNE ZARADE PO SEKTORIMA DJELATNOSTI**  
**AVERAGE WAGES BY ACTIVITY SECTORS**

u EUR

in EUR

	Ukupno <i>Total</i>	PO SEKTORIMA / BY ACTIVITY SECTORS						
		poljop. šumarstvo i vodoprivreda <i>Agriculture, forestry and water supply</i>	ribarstvo <i>Fishing</i>	vadenje ruda i kamena <i>Mining and quarrying</i>	prerađivačka industrija <i>Manufacturing</i>	proizvodnja električne energije <i>Electricity supply</i>	građevni- narstvo <i>Construc- tion</i>	rogovina na veliko i malo, opravka <i>Wholesale and retail trade, repair</i>
Ø 2007	497	446	196	725	530	701	430	301
Ø 2008	609	584	197	833	615	783	519	345
Ø 2009	643	682	213	776	613	829	554	375
2009								
I	655	659	226	851	672	814	527	364
II	650	591	187	758	645	916	598	378
III	642	667	192	762	602	784	577	371
IV	647	641	276	824	555	700	594	391
V	651	674	209	780	618	793	572	379
VI	648	685	201	775	608	801	520	376
VII	636	665	184	718	597	895	550	379
VIII	641	722	195	731	611	882	543	392
IX	631	760	206	717	598	812	551	362
X	633	753	194	731	600	815	547	368
XI	633	681	199	794	596	834	524	369
XII	653	684	253	869	639	849	543	374
2010								
I	702	929	346	1030	664	976	613	416
<b>I 2010/I 2009</b>	107.2	141.0	153.1	121.0	98.8	119.9	116.3	114.3

/nastavak/

/ continued /

	PO SEKTORIMA / BY ACTIVITY SECTORS							
	hoteli i restorani <i>Hotels and restaurants</i>	saobraćaj, skladišt. i veze <i>Transport, storage and communi- cations</i>	finansijsko posredovanje <i>Financial activities</i>	aktivnosti u vezi s nekretninama <i>Real estate activities, renting</i>	državna uprava i obav. socijalno osiguranje <i>Public administration and social insurance</i>	obrazo- vanje <i>Education</i>	zdravstveno i socijalno osiguranje <i>Health and social work</i>	ostale komunalne, društvene i lične usluge <i>Other community, social &amp; personal service activities</i>
Ø 2007	388	659	1156	438	506	433	427	431
Ø 2008	445	757	1268	531	669	570	576	532
Ø 2009	455	848	1248	571	673	595	655	562
2009								
I	447	861	1247	558	687	584	638	567
II	450	798	1189	553	676	593	641	577
III	476	798	1251	573	688	600	646	589
IV	470	872	1297	581	676	599	647	575
V	518	900	1305	587	684	600	664	545
VI	472	895	1341	597	685	594	674	551
VII	461	830	1201	587	675	591	658	561
VIII	448	818	1204	596	663	585	669	570
IX	423	886	1198	589	662	593	654	566
X	419	799	1224	559	659	594	565	547
XI	447	860	1236	515	659	599	653	543
XII	454	885	1300	563	658	602	662	548
2010								
I	522	862	1276	606	691	606	680	599
<b>I 2010/I 2009</b>	116.8	100.1	102.3	108.6	100.6	103.8	106.6	105.6



**PROSJEČNE ZARADE BEZ POREZA I DOPRINOSA PO SEKTORIMA DJELATNOSTI**  
**AVERAGE WAGES WITHOUT TAXES AND CONTRIBUTIONS BY ACTIVITY SECTOR**

<b>u EUR</b>	<b>in EUR</b>							
	Ukupno <i>Total</i>	PO SEKTORIMA / BY ACTIVITY SECTORS						
		poljoprivreda, šumarstvo i vodoprivreda <i>Agriculture, forestry and water supply</i>	ribarstvo <i>Fishing</i>	vadenje ruda i kamena <i>Mining and quarrying</i>	prerađivačka industrija <i>Manufacturing</i>	proizvodnja elekt. energije <i>Electricity supply</i>	gradevi- narstvo <i>Construction</i>	trgovina na veliko i malo, opravka <i>Wholesale and retail trade, repair</i>
Ø 2007	338	305	140	493	358	469	295	208
Ø 2008	416	398	141	574	418	530	353	242
Ø 2009	463	485	159	558	441	593	400	273
2009								
I	470	459	165	614	483	582	379	263
II	467	419	139	544	464	654	431	274
III	461	475	143	548	433	561	416	269
IV	465	457	205	593	400	502	428	284
V	468	480	156	561	445	569	413	275
VI	466	487	150	557	438	574	376	273
VII	457	474	138	515	430	641	397	275
VIII	461	516	146	525	440	631	391	285
IX	454	543	154	516	430	581	397	263
X	456	537	145	526	432	584	395	268
XI	456	485	149	572	430	598	378	269
XII	470	488	189	625	462	607	392	272
2010								
I	471	622	232	690	445	654	411	279
<b>I 2010/I 2009</b>	100.2	135.5	140.6	112.4	92.1	112.4	108.4	106.1

/nastavak/

/ continued /

	PO SEKTORIMA / BY ACTIVITY SECTORS							
	hoteli i restorani <i>Hotels and restaurants</i>	saobraćaj, skladištenje i veze <i>Transport, storage and communica- tions</i>	finansijsko posredovanje <i>Financial activities</i>	aktivnosti u vezi s nekretninama <i>Real estate activities, renting</i>	državna uprava i obav. socijalno osiguranje <i>Public administration and social insurance</i>	obrazovanje <i>Education</i>	zdravstveno i socijalno osiguranje <i>Health and social work</i>	ostale komunalne, društvene i lične usluge <i>Other community, social &amp; personal service activities</i>
Ø 2007	264	439	770	299	344	295	296	296
Ø 2008	307	513	854	363	454	388	395	370
Ø 2009	330	607	891	412	483	428	473	405
2009								
I	322	612	888	402	493	419	459	406
II	326	570	849	399	485	427	463	415
III	345	570	894	414	494	432	468	424
IV	340	623	926	419	486	431	468	413
V	375	644	930	424	492	432	479	392
VI	342	641	956	432	492	427	487	397
VII	334	594	858	424	485	425	475	405
VIII	325	586	861	430	477	421	483	412
IX	307	635	855	425	476	427	473	409
X	304	573	874	403	473	427	474	396
XI	324	617	884	371	473	431	471	393
XII	329	635	929	406	473	434	478	397
2010								
I	351	578	858	407	463	407	456	401
<b>I 2010/I 2009</b>	109.0	94.4	96.6	101.2	93.9	97.1	99.3	98.8

**INDEKSI PROSJEČNIH ZARADA PO SEKTORIMA DJELATNOSTI**  
**INDICES OF AVERAGE WAGES BY ACTIVITY SECTOR**

Ø 2009=100

	Ukupno <i>Total</i>	PO SEKTORIMA / BY ACTIVITY SECTORS						
		poljoprivreda, šumarstvo i vodoprivreda <i>Agriculture, forestry and water supply</i>	ribarstvo <i>Fishing</i>	vađenje ruda i kamena <i>Mining and quarrying</i>	prerađivačka industrija <i>Manufacturing</i>	proizvodnja električne energije <i>Electricity supply</i>	gradevi- narstvo <i>Construction</i>	trgovina na veliko i malo, opravka <i>Wholesale and retail trade, repair</i>
Ø 2007	81.6	76.4	99.5	87.0	86.2	89.5	82.9	87.2
Ø 2008	89.8	82.1	88.7	102.9	94.8	89.4	88.2	88.6
Ø 2009	100.0	100.0	100.0	100.0	100.0	100.0	100.0	100.0
2009								
I	101.9	96.6	106.1	109.7	109.6	98.2	95.1	97.0
II	101.1	86.7	87.8	97.7	105.2	110.5	107.9	100.8
III	99.8	97.8	90.1	98.2	98.2	94.6	104.1	98.9
IV	100.6	94.0	129.6	106.2	90.5	74.4	107.2	104.3
V	101.2	98.8	98.1	100.5	100.8	95.7	103.2	101.1
VI	100.8	100.4	94.4	99.9	99.2	96.6	93.9	100.3
VII	98.9	97.5	86.4	92.5	97.4	108.0	99.3	101.1
VIII	99.6	105.9	91.6	94.2	99.7	106.4	98.0	104.5
IX	98.1	111.4	96.7	92.4	97.5	97.9	89.5	96.5
X	98.4	110.4	91.1	94.2	97.9	98.3	98.7	98.1
XI	98.4	99.8	93.4	102.3	97.2	100.6	94.6	98.4
XII	101.5	100.3	118.8	112.0	104.2	102.4	98.0	99.7
2010								
I	109.2	136.2	162.4	132.7	108.3	117.7	110.6	110.9
<b>I 2010/I 2009</b>	<b>107.2</b>	<b>141.0</b>	<b>153.21</b>	<b>121.0</b>	<b>98.8</b>	<b>119.9</b>	<b>116.3</b>	<b>114.3</b>

/nastavak/

/ continued /

	PO SEKTORIMA / BY ACTIVITY SECTORS							
	hoteli i restorani <i>Hotels and restaurants</i>	saobraćaj, skladištenje i veze <i>Transport, storage and communications</i>	financijsko posredovanje <i>Financial activities</i>	aktivnosti u vezi s nekretninama <i>Real estate activities, renting</i>	državna uprava i obav. socijalno osiguranje <i>Public administration and social insurance</i>	obrazo- vanje <i>Education</i>	zdravstveno i socijalno osiguranje <i>Health and social work</i>	ostale komunalne, društvene i lične usluge <i>Other community, social &amp; personal service activities</i>
Ø 2007	87.2	87.1	91.2	82.5	75.6	76.0	74.1	81.0
Ø 2008	93.0	84.5	95.8	88.1	94.0	90.6	83.5	91.4
Ø 2009	100.0	100.0	100.0	100.0	100.0	100.0	100.0	100.0
2009								
I	98.2	101.5	99.9	97.7	102.1	98.1	97.4	108.9
II	98.9	94.1	95.3	96.8	100.4	99.7	97.9	102.7
III	104.6	94.1	100.2	100.3	102.2	100.8	98.6	104.8
IV	103.3	102.8	103.9	101.7	100.4	100.7	98.8	102.3
V	113.8	106.1	104.6	102.8	101.6	100.8	101.4	97.0
VI	103.7	105.5	107.4	104.5	101.8	99.8	102.9	98.0
VII	101.3	97.9	96.2	102.8	100.3	99.3	100.5	99.8
VIII	98.5	96.5	96.5	104.4	98.5	98.3	102.1	101.4
IX	92.7	104.5	96.0	103.1	98.4	99.7	99.8	100.7
X	92.1	94.2	98.1	97.9	97.9	99.8	86.3	97.3
XI	98.2	101.4	99.1	90.2	97.9	100.7	99.7	96.6
XII	99.8	104.3	104.2	98.6	97.8	101.2	101.7	97.5
2010								
I	114.7	101.6	102.2	106.1	102.7	101.8	103.8	106.6
<b>I 2010/I 2009</b>	<b>116.8</b>	<b>100.1</b>	<b>102.3</b>	<b>108.6</b>	<b>100.6</b>	<b>103.8</b>	<b>106.6</b>	<b>105.6</b>

**INDEKSI PROSJEČNIH ZARADA BEZ POREZA I DOPRINOSA PO SEKTORIMA DJELATNOSTI**  
**INDICES OF AVERAGE WAGES WITHOUT TAXES AND CONTRIBUTIONS BY ACTIVITY SECTOR**

Ø 2009=100

	Ukupno <i>Total</i>	PO SEKTORIMA / BY ACTIVITY SECTORS						
		poljoprivreda, šumarstvo i vodoprivreda <i>Agriculture, forestry and water supply</i>	ribarstvo <i>Fishing</i>	vađenje ruda i kamena <i>Mining and quarrying</i>	prerađivačka industrija <i>Manufacturing</i>	proizvodnja električne energije <i>Electricity supply</i>	građevinarstvo <i>Construction</i>	trgovina na veliko i malo opravka <i>Wholesale and retail trade, repair</i>
Ø 2007	81.3	76.6	99.3	85.9	85.6	88.5	83.6	86.0
Ø 2008	89.8	82.1	88.7	102.9	94.8	89.4	88.2	88.6
Ø 2009	100.0	100.0	100.0	100.0	100.0	100.0	100.0	100.0
2009								
I	101.5	94.6	103.8	110.0	109.5	98.1	94.8	96.3
II	100.9	86.4	87.4	97.5	105.2	110.3	107.8	100.4
III	99.6	97.9	89.9	98.2	98.2	94.6	104.0	98.5
IV	100.4	94.2	128.9	106.3	90.7	84.7	107.0	104.0
V	101.1	99.0	98.1	100.5	100.9	96.0	103.3	100.7
VI	100.6	100.4	94.3	99.8	99.3	96.8	94.0	100.0
VII	98.7	97.7	86.8	92.3	97.5	108.1	99.3	100.7
VIII	99.6	106.4	91.8	94.1	99.8	106.4	97.8	104.4
IX	98.1	112.0	96.9	92.5	97.5	98.0	99.3	96.3
X	98.5	110.7	91.2	94.3	98.0	98.5	98.9	98.2
XI	98.5	100.0	93.7	102.3	97.5	100.8	94.5	98.5
XII	101.5	100.0	118.9	112.0	104.8	102.4	98.0	99.6
2010								
I	101.7	128.2	145.9	123.7	100.9	110.3	102.8	102.2
I 2010/I 2009	100.2	135.5	140.6	112.4	92.1	112.4	108.4	106.1

/nastavak/

/ continued /

	PO SEKTORIMA / BY ACTIVITY SECTORS							
	hoteli i restorani <i>Hotels and restaurants</i>	saobraćaj, skladištenje i veze <i>Transport, storage and communications</i>	finansijsko posred. <i>Financial activities</i>	aktivnosti u vezi s nekretninama <i>Real estate activities, renting</i>	državna uprava i obav. socijalno osiguranje <i>Public administration and social insurance</i>	obrazovanje <i>Education</i>	zdravstveno i socijalno osiguranje <i>Health and social work</i>	ostale komunalne, društvene i lične usluge <i>Other community, social &amp; personal service activities</i>
Ø 2007	86.0	85.6	90.2	82.4	75.8	76.0	74.9	80.0
Ø 2008	93.0	84.5	95.8	88.1	94.0	90.7	83.5	91.4
Ø 2009	100.0	100.0	100.0	100.0	100.0	100.0	100.0	100.0
2009								
I	97.6	100.8	99.7	97.6	102.1	97.9	97.0	100.2
II	98.8	93.9	95.3	96.8	100.4	99.8	97.9	102.5
III	104.5	93.9	100.3	100.5	102.3	100.9	98.9	104.7
IV	103.0	102.6	103.9	101.7	100.6	100.7	98.9	102.0
V	113.6	106.1	104.4	102.9	101.9	100.9	101.3	96.8
VI	103.6	105.6	107.3	104.9	101.9	99.8	103.0	98.0
VII	101.2	97.9	96.3	102.9	100.4	99.3	100.4	100.0
VIII	98.5	96.5	96.6	104.4	98.8	98.4	102.1	101.7
IX	93.0	104.6	96.0	103.2	98.6	99.8	100.0	101.0
X	92.1	94.4	98.1	97.8	97.9	99.8	100.2	97.8
XI	98.2	101.6	99.2	90.0	97.9	100.7	99.6	97.0
XII	99.7	104.6	104.3	98.5	97.9	101.4	101.1	98.0
2010								
I	106.4	95.2	96.3	98.8	95.9	95.1	96.4	99.0
I 2010/I 2009	109.0	94.4	96.6	101.2	93.9	97.1	99.3	98.8

## PROSJEČNE ZARADE PO OPŠTINAMA / AVERAGE WAGES BY MUNICIPALITY

u EUR	Opštine / Municipalities											in EUR
	Andrijevica	Bar	Berane	Bijelo Polje	Budva	Danilovgrad	Žabljak	Kolašin	Kotor	Mojkovac	Nikšić	
Ø 2007	398	445	407	406	536	419	398	437	498	422	555	
Ø 2008	492	545	531	517	642	514	539	552	612	530	642	
Ø 2009	531	563	561	531	626	533	583	605	671	571	621	
2009												
I	518	561	582	546	627	579	610	598	666	559	648	
II	556	565	555	555	687	553	570	570	669	583	670	
III	516	587	574	519	701	522	561	605	687	541	602	
IV	523	574	550	525	676	578	508	616	698	533	624	
V	525	562	573	529	681	546	586	595	681	558	589	
VI	534	561	566	534	603	536	605	639	678	642	606	
VII	531	553	550	534	616	496	556	656	662	573	610	
VIII	529	555	550	520	592	547	574	565	664	572	621	
IX	521	543	553	519	593	548	564	574	652	568	579	
X	531	554	540	535	573	496	598	586	666	572	642	
XI	531	571	557	529	591	501	622	605	656	597	607	
XII	562	565	580	532	628	515	646	634	672	578	663	
2010												
I	635	617	635	571	755	564	609	636	738	610	736	
I 2010/I 2009	122.6	110.0	109.1	104.6	120.4	97.4	99.8	106.4	110.8	109.1	113.6	

/nastavak/	<i>Opštine / Municipalities</i>										<i>/continued/</i>
	Plav	Plužine	Pljevlja	Podgorica	Rožaje	Tivat	Ulcinj	Herceg Novi	Cetinje	Šavnik	
Ø 2007	376	444	492	548	456	486	354	408	366	420	
Ø 2008	493	549	614	676	561	575	460	499	442	526	
Ø 2009	537	654	667	727	606	639	488	504	573	546	
2009											
I	504	613	648	753	597	641	490	510	582	550	
II	571	584	651	725	595	624	488	500	578	552	
III	551	717	695	713	609	656	494	500	580	535	
IV	526	599	706	724	609	626	455	521	573	520	
V	518	794	683	732	608	678	481	560	585	538	
VI	518	590	692	733	619	631	488	525	583	542	
VII	519	655	660	726	610	605	481	500	557	530	
VIII	547	669	660	736	598	597	532	499	572	550	
IX	545	659	658	723	584	626	455	503	572	547	
X	536	635	656	715	608	631	497	479	569	564	
XI	547	791	645	710	616	661	481	487	563	552	
XII	564	655	655	736	621	708	511	475	563	573	
2010											
I	583	923	699	774	654	779	493	496	618	581	
I 2010/I 2009	115.7	150.6	107.9	102.8	109.5	121.5	100.6	97.3	106.2	105.6	

**PROSJEČNE ZARADE BEZ POREZA I DOPRINOSA PO OPŠTINAMA**  
**AVERAGE WAGES WITHOUT TAXES AND CONTRIBUTIONS BY ACTIVITY SECTOR**

<b>u EUR</b>	<b>Opštine / Municipalities</b>											<b>in EUR</b>
	Andrijevica	Bar	Berane	Bijelo Polje	Budva	Danilovgrad	Žabljak	Kolašin	Kotor	Mojkovac	Nikšić	
Ø 2007	271	302	278	277	361	285	272	296	339	288	377	
Ø 2008	336	371	361	353	439	352	368	376	419	361	439	
Ø 2009	382	405	404	383	451	384	420	435	484	411	448	
2009												
I	371	398	415	390	446	410	438	428	479	400	466	
II	399	407	399	399	493	397	411	410	483	418	483	
III	372	421	416	375	504	376	405	435	494	390	435	
IV	376	413	399	379	485	416	367	444	505	384	450	
V	378	405	413	382	490	394	423	428	492	402	425	
VI	384	405	409	386	434	387	436	460	491	462	438	
VII	383	400	397	386	444	359	400	472	478	414	439	
VIII	381	399	396	376	428	394	413	407	479	412	448	
IX	375	392	401	375	428	395	405	413	471	408	418	
X	382	399	389	387	414	359	430	422	478	411	464	
XI	383	412	401	382	429	361	447	435	473	430	439	
XII	404	408	419	385	455	372	465	456	485	416	478	
2010												
I	425	413	425	383	507	378	408	426	494	409	493	
<b>I 2010/I 2009</b>	114.6	103.8	102.4	98.2	113.7	92.2	93.2	99.5	103.1	102.2	105.8	

<b>/nastavak/</b>	<b>Opštine / Municipalities</b>										<b>/ continued /</b>
	Plav	Plužine	Pljevlja	Podgorica	Rožaje	Tivat	Ulcinj	Herceg Novi	Cetinje	Šavnik	
Ø 2007	255	301	334	371	310	331	243	281	251	285	
Ø 2008	332	377	420	460	382	392	315	344	300	358	
Ø 2009	386	469	479	522	436	460	353	364	413	393	
2009											
I	362	442	466	540	430	460	354	369	419	395	
II	410	421	467	520	429	449	352	361	416	398	
III	397	515	500	512	438	472	357	360	419	385	
IV	379	430	508	519	438	452	330	377	413	374	
V	372	569	490	525	438	487	348	403	423	388	
VI	377	422	496	526	446	455	353	379	420	390	
VII	375	471	475	521	440	439	347	361	402	381	
VIII	394	480	475	529	430	429	383	362	412	396	
IX	392	473	473	519	421	450	329	363	412	394	
X	386	455	472	513	437	454	359	348	411	406	
XI	394	566	465	509	443	475	348	352	405	398	
XII	406	470	472	529	447	512	368	344	405	413	
2010											
I	390	618	469	519	438	522	331	332	414	389	
<b>I 2010/I 2009</b>	107.7	139.8	100.6	96.1	101.9	103.5	93.5	90.0	98.8	98.5	

**INDEKSI CIJENA PROIZVOĐAČA INDUSTRIJSKIH PROIZVODA**  
**PRODUCERS PRICE INDICES FOR INDUSTRIAL PRODUCTS**

	2008 2007	2009 2008	I 2010 I 2009	Ø 2009 = 100					
				2009					
				I	II	III	IV	V	VI
<b>Ukupno</b>	<b>114.0</b>	<b>96.1</b>	<b>93.6</b>	<b>104.0</b>	<b>103.1</b>	<b>100.7</b>	<b>101.0</b>	<b>100.2</b>	<b>98.5</b>
<b>Vađenje ruda i kamena</b>	<b>114.0</b>	<b>102.7</b>	<b>99.1</b>	<b>99.3</b>	<b>100.6</b>	<b>100.8</b>	<b>100.7</b>	<b>100.6</b>	<b>100.2</b>
<b>Prerađivačka industrija</b>	<b>111.3</b>	<b>90.9</b>	<b>95.5</b>	<b>105.5</b>	<b>103.9</b>	<b>100.5</b>	<b>100.9</b>	<b>99.6</b>	<b>97.1</b>
<b>Proizvodnja el. energije, gasa i vode</b>	<b>121.4</b>	<b>108.5</b>	<b>86.5</b>	<b>101.5</b>	<b>101.5</b>	<b>101.5</b>	<b>101.5</b>	<b>101.5</b>	<b>101.5</b>
<b>Vađenje ruda i kamena</b>	<b>114.0</b>	<b>102.7</b>	<b>99.1</b>	<b>99.3</b>	<b>100.6</b>	<b>100.8</b>	<b>100.7</b>	<b>100.6</b>	<b>100.2</b>
Vađenje energetskih sirovina	117.9	101.0	98.4	100.5	100.5	100.5	100.5	100.5	100.5
Vađenje kamenog uglja, lignita i treseta	117.9	101.0	98.4	100.5	100.5	100.5	100.5	100.5	100.5
Vađenje ostalih sirovina i materijala	110.9	104.0	99.7	98.4	100.7	101.0	100.9	100.7	100.0
Vađenje ruda metala	111.2	105.3	101.5	96.8	99.7	100.1	100.0	100.7	100.7
Vađenje ostalih ruda i kamena	109.9	98.1	92.4	105.1	105.1	104.6	104.6	100.9	97.1
<b>Prerađivačka industrija</b>	<b>111.3</b>	<b>90.9</b>	<b>95.5</b>	<b>105.5</b>	<b>103.9</b>	<b>100.5</b>	<b>100.9</b>	<b>99.6</b>	<b>97.1</b>
Prehrambeni proizvodi, pića i duvan	113.0	103.4	99.3	99.7	99.9	100.4	100.2	100.6	100.6
Proizv. prehrambenih proizvoda i pića	115.2	101.9	99.2	99.6	99.9	100.5	100.3	100.6	100.6
Proizvodnja duvanskih proizvoda	100.0	114.2	100.0	100.0	100.0	100.0	100.0	100.0	100.0
Proizvodnja tekstila i tekstilnih proizvoda	104.6	98.2	103.9	99.2	105.0	105.1	105.1	105.1	99.0
Proizvodnja tekstilnih prediva i tkanina	101.2	99.9	98.8	100.5	100.5	98.6	98.6	98.6	98.6
Proizvodnja odjevnih predmeta i krzna	111.1	95.0	104.7	99.0	105.7	106.1	106.1	106.1	99.0
Proizvodnja kože i predmeta od kože	101.4	104.7	100.0	100.0	100.0	100.0	100.0	100.0	100.0
Proizvodnja predmeta od kože i obuće	101.4	104.7	100.0	100.0	100.0	100.0	100.0	100.0	100.0
Prerada drveta i proizvoda od drveta	109.6	104.1	98.6	101.1	106.3	104.6	104.4	102.3	93.6
Proizvodi od drveta, plute i slično	109.6	104.1	98.6	101.1	106.3	104.6	104.4	102.3	93.6
Proizvodnja papira, izdavanje i štampanje	118.7	99.7	99.8	100.1	100.1	100.1	100.1	100.1	100.1
Proizv. celuloze, papira i proizv. od papira	100.7	101.1	99.1	100.2	100.2	100.2	100.2	100.2	100.2
Izdavanje, štampanje i reprodukcija	127.3	99.2	100.0	100.0	100.0	100.0	100.0	100.0	100.0
Prerada hemijskih proizvoda i vlakana	108.8	113.0	100.5	95.0	95.0	95.4	103.4	103.4	103.4
Proizvodnja hemikalija i hem. proizvoda	108.8	113.0	100.5	95.0	95.0	95.4	103.4	103.4	103.4
Proizvodnja proizv. od gume i plastike	103.5	104.9	102.0	98.7	98.7	98.7	98.7	100.7	100.7
Proizvodnja proizv. od gume i plastike	103.5	104.9	102.0	98.7	98.7	98.7	98.7	100.7	100.7
Proizv. proizvoda od ost. nemetalnih min.	105.8	99.0	101.4	99.9	99.9	99.9	99.9	99.9	99.9
Proizv. proizvoda od ost. nemet. minerala	105.8	99.0	101.4	99.9	99.9	99.9	99.9	99.9	99.9
Proizv. osn. metala i metalnih proizvoda	111.5	76.2	90.6	113.4	107.9	100.3	100.3	97.5	93.9
Proizvodnja osnovnih metala	112.0	73.9	89.8	114.6	108.7	100.5	100.5	97.6	93.7
Proizvodnja metal. proizv., osim mašina	101.3	110.1	104.4	96.9	96.9	96.9	96.9	96.9	96.9
Proizvodnja mašina i uređaja, ostala	98.9	99.3	98.8	100.8	100.8	100.8	100.8	100.8	100.8
Proizvodnja mašina i uređaja, ostala	98.9	99.3	98.8	100.8	100.8	100.8	100.8	100.8	100.8
Prerađivačka industrija, ostala	113.7	112.3	104.8	94.2	103.5	103.5	103.5	103.5	99.6
Proizv. namještaja i raznovrsnih proizvoda	113.7	112.3	104.8	94.2	103.5	103.5	103.5	103.5	99.6
<b>Proizvodnja el. energije, gasa i vode</b>	<b>121.4</b>	<b>108.5</b>	<b>86.5</b>	<b>101.5</b>	<b>101.5</b>	<b>101.5</b>	<b>101.5</b>	<b>101.5</b>	<b>101.5</b>
Proizv. električne energije, gasa i vode	121.4	108.5	86.5	101.5	101.5	101.5	101.5	101.5	101.5
Proizv. el. energije, gasa i vode	121.4	108.5	86.5	101.5	101.5	101.5	101.5	101.5	101.5
<b>Izabrane grupe proizvoda</b>									
<b>Elementi i materijal za ugrađivanje u građevinarstvu</b>	107.0	107.8	105.2	97.2	98.3	97.9	97.9	97.6	98.9

**INDEKSI CIJENA PROIZVOĐAČA INDUSTRIJSKIH PROIZVODA**  
**PRODUCERS PRICE INDICES FOR INDUSTRIAL PRODUCTS**

Ø 2009 = 100							
2009						2010	
VII	VIII	IX	X	XI	XII	I	
96.9	97.6	98.6	99.3	99.7	100.4	97.4	<b>Total</b>
99.6	99.6	99.6	99.5	100.3	99.1	98.4	<b>Mining and quarrying</b>
96.0	97.1	98.6	99.6	100.1	101.2	100.7	<b>Manufacturing</b>
98.5	98.5	98.5	98.5	98.5	98.5	87.8	<b>Electricity, gas and water supply</b>
99.6	99.6	99.6	99.5	100.3	99.1	98.4	<b>Mining and quarrying</b>
99.1	99.1	99.1	98.7	100.5	100.5	98.9	Extraction of energy producing materials
99.1	99.1	99.1	98.7	100.5	100.5	98.9	Mining of coal and lignite, extraction of peat
100.0	100.0	100.0	100.0	100.0	98.1	98.1	Mining and quarr. exc. energy produc. materials
100.7	100.7	100.7	100.7	100.7	98.3	98.3	Mining of metal ores
97.1	97.1	97.1	97.1	97.1	97.1	97.1	Other mining and quarrying
96.0	97.1	98.6	99.6	100.1	101.2	100.7	<b>Manufacturing</b>
100.1	101.1	99.7	99.6	99.7	99.6	99.0	Manuf. of food produc., beverages and tobacco
100.1	100.1	99.6	99.5	99.7	99.5	98.9	Manufacture of food products and beverages
100.0	100.0	100.0	100.0	100.0	100.0	100.0	Manufacture of tobacco products
93.0	97.7	96.8	96.8	98.7	98.7	103.1	Manufacture of textile and textile products
98.6	108.5	108.7	108.7	90.2	90.2	99.2	Manufacture of textiles
92.1	96.0	94.9	94.9	100.0	100.0	103.7	Manufacture of wearing apparel and fur
100.0	100.0	100.0	100.0	100.0	100.0	100.0	Manufacture of leather and leather products
100.0	100.0	100.0	100.0	100.0	100.0	100.0	Manufac. of leather products and footwear
93.9	96.2	99.2	99.2	99.7	99.4	99.7	Manufacture of wood and wood products
93.9	96.2	99.2	99.2	99.7	99.4	99.7	Manufac. of wood product, cork and similar
100.1	100.1	100.1	99.8	99.8	99.8	99.8	Manufacture of paper, publishing and printing
100.2	100.2	100.2	99.3	99.3	99.3	99.3	Manufac. of pulp, paper and paper products
100.0	100.0	100.0	100.0	100.0	100.0	100.0	Publishing, printing and reproduction
102.8	102.8	103.3	103.2	97.1	95.5	95.5	Manufacture of chemical products and fibres
102.8	102.8	103.3	103.2	97.1	95.5	95.5	Manuf. of chemicals and chemical products
100.7	100.7	100.7	100.7	100.7	100.7	100.7	Manufacture of rubber and plastic products
100.7	100.7	100.7	100.7	100.7	100.7	100.7	Manufacture of rubber and plastic products
99.9	99.9	99.9	99.9	99.9	101.3	101.3	Manufacture of other non-metal minerals
99.9	99.9	99.9	99.9	99.9	101.3	101.3	Manuf. of other non-metal mineral products
92.0	94.1	96.9	99.2	100.9	103.6	102.7	Manufac. of basic metals and metal products
91.4	93.6	96.7	98.7	100.6	103.4	102.9	Manufacture of basic metals
100.7	100.7	100.3	106.4	105.4	105.4	101.1	Manuf. of metal products except machinery
97.1	97.1	100.8	100.8	99.6	99.6	99.6	Manufacture of other machinery and equipment
97.1	97.1	100.8	100.8	99.6	99.6	99.6	Manuf. of other machinery and equipment
98.7	98.7	98.7	98.7	98.7	98.7	98.7	Manufacturing n.e.c.
98.7	98.7	98.7	98.7	98.7	98.7	98.7	Manufac. of furniture and related products
98.5	98.5	98.5	98.5	98.5	98.5	87.8	<b>Electricity, gas and water supply</b>
98.5	98.5	98.5	98.5	98.5	98.5	87.8	Electricity, gas and water supply
98.5	98.5	98.5	98.5	98.5	98.5	87.8	Electricity, gas and water supply
99.7	101.0	101.8	103.2	103.2	103.3	102.3	<b>Chosen groups of products</b> <b>Elements and material for building in the construction</b>

**INDEKSI POTROŠAČKIH CIJENA PO GRUPAMA PROIZVODA**  
**RETAIL BY GROUPS OF PRODUCTS**

	2009 2008	I 2010 I 2009	Ø 2009 = 100					
			2009					
			I	II	III	IV	V	VI
Hleb i žitarice	102.8	99.7	99.6	99.8	99.8	99.7	100.0	100.3
Meso	106.7	102.3	97.9	99.7	100.0	99.3	99.5	100.1
Riba	104.7	113.5	96.2	96.3	95.0	94.2	95.8	96.7
Mlijeko, sir i jaja	108.7	99.7	100.4	100.1	99.7	99.5	99.5	99.5
Ulje i masti	83.6	77.0	113.4	111.7	110.1	102.9	100.0	100.1
Voće	95.7	98.3	93.0	97.0	103.6	108.0	107.8	107.4
Povrće	99.8	98.3	104.7	108.1	108.0	115.9	117.8	96.6
Šećer, med, pekmez i ost. slat.	103.1	104.5	98.2	97.8	97.6	98.6	98.7	98.6
Ostali prehrambeni proizvodi	99.7	98.5	100.1	99.8	100.2	99.9	100.1	100.7
Bezalkoholna pića	98.5	94.1	102.4	101.1	101.1	99.1	98.9	99.9
Alkoholna pića	107.3	102.2	99.4	98.8	98.9	98.9	99.0	99.2
Duvan	108.4	102.1	99.6	98.6	98.6	98.6	98.6	98.6
Materijal za odjeću	100.2	99.7	100.0	99.8	99.7	99.7	99.9	99.8
Odjeća	100.9	99.4	101.0	100.3	100.4	100.0	99.9	99.7
Ostalo za odjeću	100.8	96.5	100.8	101.2	101.2	101.2	99.3	99.3
Čišćenje i iznajmljivanje odjeće	115.8	115.0	88.9	91.7	100.3	102.1	102.1	102.1
Obuća	100.3	100.3	100.0	100.1	99.9	99.7	99.6	99.6
Popravka i iznajmljivanje obuće	102.7	104.1	97.3	97.3	100.2	100.2	100.6	100.6
Održavanje i popravke za stan	105.8	104.9	96.9	96.2	97.1	98.2	98.9	98.9
Snadbijevanje vodom	112.2	103.1	97.7	98.8	98.8	98.8	98.8	101.0
Elektr. energija, plin i ost. goriva	114.8	90.3	101.1	101.1	101.1	101.1	101.1	101.1
Namještaj i pokućstvo	90.3	85.2	111.5	108.7	103.0	100.9	98.4	98.2
Tekstilni proizvodi za kuću	101.2	104.6	100.0	99.9	99.6	99.4	99.5	100.5
Kućni aparati	98.9	92.3	104.3	103.7	103.1	103.0	101.6	100.1
Stakleno, stono posudje	99.1	96.3	100.6	100.3	100.3	100.2	100.2	100.1
Alati i oprema za kuću	99.2	95.4	101.7	100.7	101.0	100.3	99.7	99.9
Dobra i usluge za potrošnju	97.9	91.8	104.0	104.2	105.2	104.3	101.2	101.5
Zdravlje	102.7	98.9	100.5	101.5	101.5	99.2	99.3	99.7
Kupovina vozila	105.6	99.6	100.2	100.1	100.1	100.0	100.0	100.0
Oprema za održavanje vozila	89.8	128.5	87.5	92.1	90.8	93.5	94.1	98.7
Prevozne usluge	114.5	111.5	94.4	95.5	95.0	96.9	96.9	99.4
Komunikacije	103.7	100.1	100.0	99.8	99.9	100.0	100.0	100.0
Kultura i rekreacije	100.5	98.7	100.2	99.8	100.2	99.8	100.2	100.0
Obrazovanje	100.0	100.0	100.0	100.0	100.0	100.0	100.0	100.0
Restorani i hoteli	109.1	102.8	99.4	99.7	99.5	100.0	100.0	99.9
Ostala dobra i usluge	101.3	101.8	99.5	99.5	99.3	100.2	100.2	100.2



**INDEKSI POTROŠAČKIH CIJENA PO GRUPAMA PROIZVODA**  
**RETAIL BY GROUPS OF PRODUCTS**

Ø 2009 = 100							
2009						2010	
VII	VIII	IX	X	XI	XII	I	
100.3	100.3	100.2	100.0	100.1	99.8	99.4	<i>Breads and cereals</i>
100.4	100.3	100.5	100.7	100.7	100.8	100.2	<i>Meat</i>
97.2	99.9	105.2	107.8	107.8	107.8	109.2	<i>Fish</i>
99.5	99.9	100.3	100.4	100.5	100.7	100.1	<i>Milk, cheese, eggs</i>
99.3	98.9	98.6	88.9	88.0	88.0	87.2	<i>Oils and fats</i>
107.7	105.6	99.6	95.4	88.0	86.9	91.5	<i>Fruit</i>
84.4	89.1	90.4	92.7	94.2	98.2	102.9	<i>Vegetables</i>
99.7	102.0	101.7	102.5	102.1	102.5	102.6	<i>Sugar, honey, jam, etc.</i>
100.7	100.0	99.7	100.2	99.4	99.3	98.5	<i>Other alimentary products</i>
100.1	99.8	98.8	99.5	99.9	99.4	96.3	<i>Non-alcoholic beverages</i>
99.4	101.2	101.2	101.3	101.3	101.4	101.6	<i>Alcoholic beverages</i>
98.6	101.7	101.7	101.7	101.7	101.7	101.7	<i>Tobacco</i>
100.3	100.4	100.2	100.2	100.0	100.0	99.7	<i>Material for clothes</i>
99.7	99.6	99.5	100.2	100.0	99.7	100.4	<i>Clothes</i>
99.3	99.3	99.4	99.4	99.9	99.8	97.3	<i>Other for clothes</i>
102.1	102.1	102.1	102.1	102.1	102.1	102.2	<i>Cleaning and renting of clothes</i>
99.5	99.5	99.5	101.0	101.1	100.6	100.3	<i>Footwear</i>
100.6	100.6	100.6	100.6	100.6	100.6	101.2	<i>Repairing and renting of footwear</i>
99.0	101.1	103.5	103.5	103.0	103.6	101.7	<i>Maintenance and reparation of flats</i>
101.0	101.0	101.0	101.0	101.0	101.0	100.8	<i>Water</i>
99.1	99.1	99.0	98.7	98.7	98.7	91.2	<i>Electricity, petrol, and oth. fuels</i>
98.2	97.1	96.5	96.2	95.8	95.5	95.0	<i>Furniture and household furnish.</i>
100.5	100.1	100.1	100.1	100.3	99.9	104.6	<i>Textile products for house</i>
99.4	98.3	97.8	97.0	96.4	95.3	96.3	<i>Household aparatures</i>
100.1	100.1	99.9	99.9	99.4	98.8	96.9	<i>Glass, table ware</i>
99.9	99.9	99.6	99.5	98.9	98.8	97.0	<i>Tools and equipment for house</i>
100.9	99.0	94.7	94.8	95.1	95.1	95.4	<i>Goods and services for consumpt.</i>
99.8	99.7	99.7	99.7	99.7	99.7	99.5	<i>Health care</i>
100.0	99.9	99.9	99.9	99.9	99.9	99.8	<i>Buying of vehicles</i>
96.6	111.2	107.6	107.6	110.1	110.1	112.5	<i>Equip. for maintaining of vehicles</i>
103.1	103.1	103.9	103.9	103.9	103.9	105.2	<i>Transport services</i>
100.0	100.0	100.1	100.1	100.1	100.0	100.0	<i>Communications</i>
100.0	100.1	99.9	99.9	100.0	100.0	99.0	<i>Culture and recreations</i>
100.0	100.0	100.0	100.0	100.0	100.0	100.0	<i>Education</i>
99.9	100.0	100.2	100.4	100.4	100.4	102.2	<i>Restaurants and hotels</i>
100.2	100.2	100.3	100.2	100.1	100.1	101.3	<i>Other goods and services</i>

# **INDEKSI POTROŠAČKIH CIJENA / CONSUMER PRICES INDEX**

Ø 2009 = 100

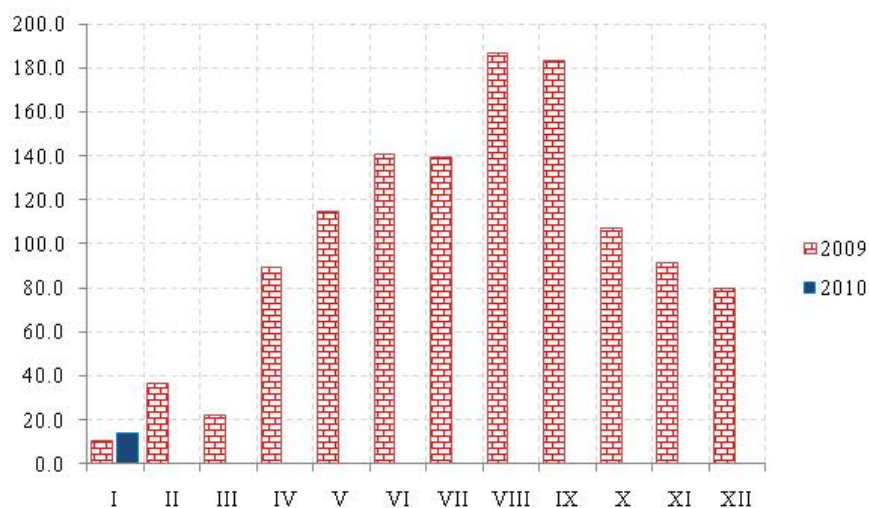
	Potrošačke cijene ukupno <i>Consumer prices- total</i>	Hrana i bezalkoholna pića <i>Food and non alcoholic beverage</i>	Alkoholna pića i duvan <i>Alcoholic beverages and tobacco</i>	Odjeća i obuća <i>Clothing and footwear</i>	Stanovanje <i>Renting</i>	Pokućstvo i oprema za kuću <i>Household furnishings</i>
2008	96.7	96.8	93.2	99.2	87.7	102.8
2009	100.0	100.0	100.0	100.0	100.0	100.0
2009						
I	99.2	100.1	99.4	100.5	100.3	104.8
II	99.9	101.0	98.8	100.1	100.4	104.1
III	99.8	101.2	98.9	100.1	100.4	103.2
IV	100.2	101.8	98.9	99.9	100.5	102.4
IV	100.3	102.0	99.0	99.8	100.6	100.5
VI	99.9	99.9	99.3	99.7	100.8	100.2
VII	99.3	98.7	99.4	99.6	99.4	99.8
VIII	100.5	99.3	101.2	99.6	99.5	98.6
IX	100.2	99.2	101.2	99.5	99.6	97.0
X	100.2	99.0	101.3	100.5	99.4	96.7
XI	100.2	98.7	101.3	100.5	99.5	96.6
XII	100.3	99.1	101.3	100.2	99.6	96.1
2009						
I	100.0	99.4	101.6	100.4	93.9	96.9
<b>I 2010/I 2009</b>	100.8	99.3	102.2	99.9	93.6	92.4

/ nastavak /

/ continued /

	Zdravlje <i>Health care</i>	Prevoz <i>Transport</i>	Komunikacije <i>Communications</i>	Kultura i rekreacija <i>Culture and recreation</i>	Obrazovanje <i>Education</i>	Restorani i hoteli <i>Restaurants and hotels</i>	Ostala dobra i usluge <i>Other goods and sevice</i>
2008	97.4	104.4	96.4	99.5	100.0	91.6	98.7
2009	100.0	100.0	100.0	100.0	100.0	100.0	100.0
2009							
I	100.5	91.1	100.0	100.2	100.0	99.4	99.5
II	101.5	94.1	99.8	99.8	100.0	99.7	99.5
III	101.5	93.2	99.9	100.2	100.0	99.5	99.3
IV	99.2	95.4	100.0	99.8	100.0	100.0	100.2
V	99.3	95.7	100.0	100.2	100.0	100.0	100.2
VI	99.7	99.1	100.0	100.0	100.0	100.0	100.2
VII	99.8	99.1	100.0	100.0	100.0	100.0	100.2
VIII	99.7	107.3	100.0	100.0	100.0	100.0	100.2
IX	99.7	105.5	100.1	99.9	100.0	100.2	100.3
X	99.7	105.5	100.1	99.9	100.0	100.4	100.2
XI	99.7	107.0	100.1	100.0	100.0	100.4	100.1
XII	99.7	107.0	100.0	100.0	100.0	100.4	100.1
2010							
I	99.5	108.7	100.0	99.0	100.0	102.2	101.3
<b>I 2010/I 2009</b>	98.9	119.2	100.1	98.7	100.0	102.8	101.8

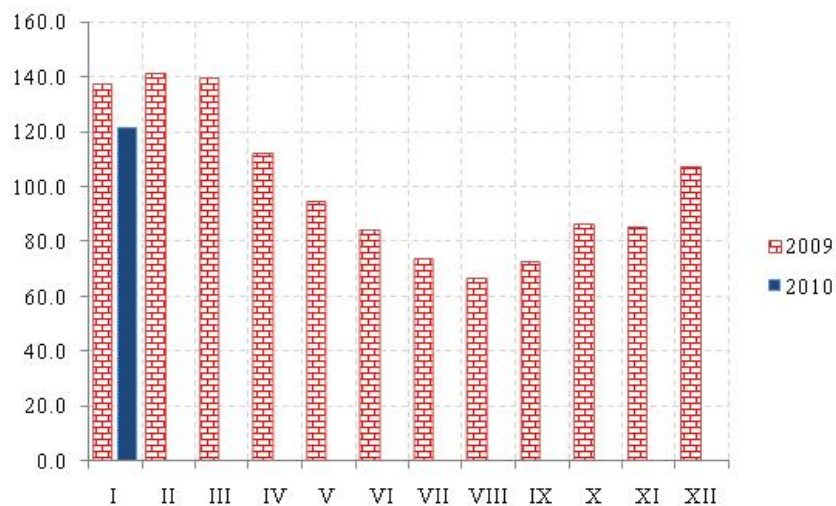
## ŠUMARSTVO / FORESTRY



Ø 2009 = 100

	Indeks Index	Ukupno Total	Proizvedeni sortimenti, m³ / Production of forests assortments						
			Četinara / Conifers				Lišćara / Deciduous trees		
			trupci Saw logs	tehničko drvo Lumber	prostorno drvo Space wood	ogrijevno drvo Firewood	trupci Saw logs	prostorno drvo Space wood	ogrijevno drvo Firewood
2005	132.3	279228	166742	10156	11521	1949	47719	7460	33510
2006	152.1	325896	194057	11808	12798	1334	46736	15406	43754
2007	122.6	263787	151440	8878	12623	367	45000	14388	31091
2008	131.9	281260	160901	13090	17492	861	46467	9655	32794
2009	100.0	216546	128520	6525	10992	2149	29121	5748	33491
2009									
I	10.7	1832	1304	90	364	-	-	4	70
II	36.3	5798	4867	361	541	-	-	4	25
III	22.0	3561	2891	141	392	-	92	2	43
IV	89.4	14772	11118	713	1456	1	648	363	473
V	114.9	19969	13244	841	1076	49	2042	808	1909
VI	140.5	25557	13888	799	1264	83	4528	979	4016
VII	139.0	25417	13671	666	1241	203	4612	368	4656
VIII	186.4	34251	18370	738	964	52	6531	338	7258
IX	182.9	33517	19225	816	1213	249	4762	660	6592
X	106.8	20156	11054	250	699	260	2935	919	4039
XI	91.4	16976	9469	609	1083	267	2171	759	2618
XII	79.7	14740	9419	501	699	985	800	544	1792
2010									
I	13.8	2337	1703	70	524	-	-	25	15
I 2010/I 2009	129.0	127.6	130.6	77.8	144.0	-	-	625.0	21.4

INDUSTRIJA / INDUSTRY  
**INDEKSI INDUSTRIJSKE PROIZVODNJE – po sektorima**  
**INDICES OF INDUSTRIAL PRODUCTION – by sectors**



Ø 2009= 100

	INDUSTRIJA Ukupno <i>INDUSTRY Total</i>	Vađenje ruda i kamena <i>Mining and quarrying</i>	Prerađivačka industrija <i>Manufacturing</i>	Proizvodnja električne energije, gasa i vode <i>Electricity, gas and water supply</i>
2005	148.9	81.3	168.7	103.8
2006	150.3	242.6	168.1	106.9
2007	150.4	246.4	183.5	77.7
2008	147.5	289.9	162.9	102.4
2009	100.0	100.0	100.0	100.0
2009				
I	137.1	117.8	101.3	206.3
II	141.2	164.8	101.1	213.5
III	139.5	196.2	128.6	153.4
IV	112.1	176.5	101.2	125.1
V	94.6	78.7	104.6	77.7
VI	84.2	15.4	110.8	42.3
VII	73.8	16.5	99.5	32.3
VIII	66.7	26.2	93.1	22.1
IX	72.3	161.5	102.2	6.4
X	86.4	145.3	90.6	71.5
XI	85.0	45.6	76.0	106.3
XII	107.1	55.5	91.0	143.1
2010				
I	121.6	129.6	64.0	228.2
I 2010/I 2009	88.7	110.0	63.2	110.6

**INDEKSI INDUSTRIJSKE PROIZVODNJE – po podsektorima**  
**INDICES OF INDUSTRIAL PRODUCTION – by sub-sectors**

Ø 2009 = 100

	Vađenje energetske sirovine <i>Extraction of energy producing materials</i>	Vađenje ostalih sirovina i materijala <i>Mining and quarrying except energy producing materials</i>	Prehrambeni proizvodi, pića i duvan <i>Manufacture of food products, beverages and tobacco</i>	Proizvodnja tekstila i tekstilnih proizvoda <i>Manufacture of textile and textile products</i>
2005	136.1	371.9	111.3	855.1
2006	160.0	354.9	99.9	997.1
2007	125.1	412.0	99.2	921.3
2008	175.4	446.4	112.7	735.3
2009	100.0	100.0	100.0	100.0
2009				
I	188.4	21.7	84.0	150.5
II	219.0	91.1	94.5	118.2
III	240.4	136.2	115.4	140.7
IV	216.1	122.6	84.2	55.3
V	72.7	86.8	103.2	80.7
VI	7.1	26.8	105.4	113.1
VII	9.4	26.2	117.8	112.7
VIII	26.2	26.2	118.2	92.6
IX	35.3	333.0	104.6	99.4
X	73.0	243.7	80.0	112.7
XI	58.0	28.7	82.6	52.1
XII	54.4	57.0	110.1	72.0
2010				
I	194.2	41.8	70.9	87.9
I 2010/I 2009	103.1	192.6	84.4	58.4

/nastavak/

/continued/

	Proizvodnja kože i predmeta od kože <i>Manufacture of leather and leather products</i>	Prerada drveta i proizvodi od drveta <i>Manufacture of wood and wood products</i>	Proizvodnja papira, izdavanje i štampanje <i>Manufacture of paper, publishing and printing</i>	Proizvodnja hemijskih proizvoda i vlakana <i>Manufacture of chemical products and fibres</i>
2005	148.2	199.7	114.1	113.9
2006	207.3	197.7	109.5	70.8
2007	337.9	200.3	115.7	108.0
2008	729.9	152.2	107.8	70.4
2009	100.0	100.0	100.0	100.0
2009				
I	276.9	24.9	83.3	49.9
II	369.2	46.8	88.8	79.8
III	184.7	96.9	126.5	142.2
IV	92.3	87.2	92.2	111.2
V	-	95.8	104.5	78.5
VI	-	90.2	109.5	112.7
VII	92.3	124.4	122.2	84.9
VIII	-	143.6	112.9	86.3
IX	92.3	124.5	99.6	127.7
X	-	131.7	92.2	130.0
XI	-	110.6	77.2	83.1
XII	92.3	123.4	91.1	113.8
2010				
I	-	29.9	75.9	40.8
I 2010/I 2009	-	120.1	91.1	81.8

**INDEKSI INDUSTRIJSKE PROIZVODNJE – po podsektorima**  
**INDICES OF INDUSTRIAL PRODUCTION – by sub-sectors**

Ø 2009 = 100

/nastavak /

/continued/

	Proizvodnja proizvoda od gume i plastičnih masa <i>Manufacture of rubber and plastic products</i>	Proizvodnja proizvoda od ostalih nemetalnih minerala <i>Manufacture of other non-metal minerals</i>	Proizvodnja osnovnih metala i metalnih proizvoda <i>Manufacture of basic metals and metal products</i>	Proizvodnja mašina i uređaja, ostala <i>Manufacture of other machinery and equipment</i>
2005	386.8	175.3	213.3	44.4
2006	269.1	177.1	223.4	100.4
2007	273.4	176.2	246.9	97.1
2008	173.6	172.4	215.0	91.6
2009	100.0	100.0	100.0	100.0
2009				
I	99.1	96.7	121.5	183.7
II	177.4	87.7	120.0	52.9
III	122.6	101.6	146.4	31.6
IV	78.3	107.0	106.1	95.7
V	143.5	102.7	116.3	68.9
VI	54.8	88.9	118.4	95.7
VII	88.7	95.7	95.9	70.7
VIII	60.0	101.8	77.1	122.5
IX	88.7	100.8	92.1	119.6
X	99.1	106.4	76.2	114.1
XI	83.5	103.5	60.4	125.3
XII	104.3	107.2	69.6	119.3
2010				
I	31.3	103.6	59.7	92.9
<b>I 2010/I 2009</b>	31.6	107.1	49.1	50.6

/nastavak /

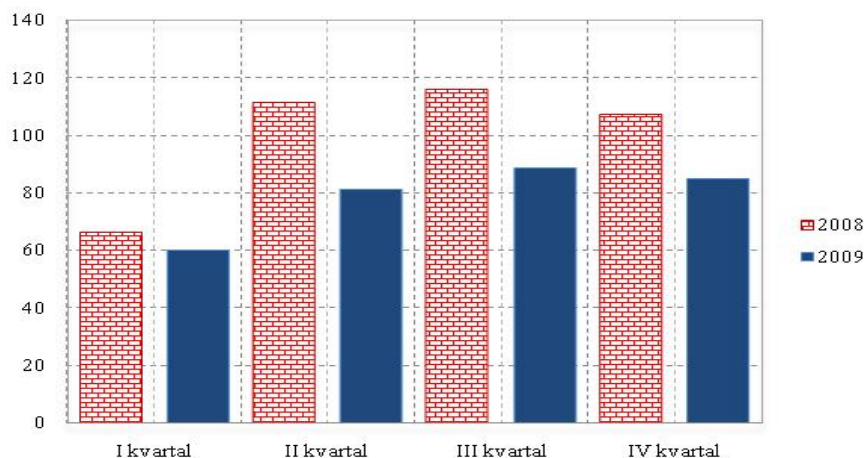
/continued/

	Proizvodnja mašina, uređaja i aparata za domaćinstvo <i>Manufacture of machines, devices and apparatus for households</i>	Proizvodnja saobraćajnih sredstava <i>Manufacture of transport equipment</i>	Prerađivačka industrija, ostala <i>Manufacturing n.e.c.</i>	Proizvodnja električne energije, gasa i vode <i>Electricity, gas and water supply</i>
2005	165.6	137.7	48.9	103.8
2006	189.4	135.8	188.9	106.9
2007	303.9	132.6	186.6	77.7
2008	100.0	113.6	194.2	102.4
2009	100.0	100.0	100.0	100.0
2009				
I	-	101.1	83.3	206.3
II	-	88.4	60.4	213.5
III	-	75.8	68.1	153.4
IV	-	105.4	130.4	125.1
V	-	138.9	92.7	77.7
VI	-	138.9	94.9	42.3
VII	-	138.9	152.5	32.3
VIII	-	96.8	98.9	22.1
IX	-	71.6	98.4	6.4
X	-	88.4	88.0	71.5
XI	-	71.6	112.6	106.3
XII	-	84.2	119.8	143.1
2010				
I	-	71.6	52.1	228.2
<b>I 2010/I 2009</b>	-	70.8	62.5	110.6

**GRADEVINARSTVO / CONSTRUCTION**

Vrijednost izvršenih radova u hiljadama EUR / Value of finalized construction works

Ø 2008 = 100

**VRIJEDNOST IZVRŠENIH I UGOVORENIH RADOVA, BROJ ZAPOSLENIH I IZVRŠENI EFEKTIVNI ČASOVI**

VALUE OF FINALIZED AND ORDERED WORKS, NUMBER OF EMPLOYEES AND FINALIZED EFFECTIVE HOURS

	Indeks Index	Vrijednost izvršenih radova u hiljadama EUR Value of finalized construction works	Prosječan broj radnika na gradilištu Average number of employees	Indeks Index	Izvršeni efektivni časovi u 000 Finalized effective hours in thousands	
2005	25.5	73252	2343	53.5	5345	2005
2006	70.9	204248	3525	84.3	8424	2006
2007	68.6	197639	3522	82.9	8280	2007
2008	100	287931	4200	100	9994	2008
2009						2009
2008 I kvartal	65.9	47445	4093	88.3	2205	2008 I quarter
II kvartal	111.2	80023	4567	103.0	2574	II quarter
III kvartal	115.8	83376	4118	107.1	2676	III quarter
IV kvartal	107.1	77087	4021	101.6	2539	IV quarter
2009 I kvartal	59.9*	43085*	3899*	77.9*	1946*	2009 I quarter
II kvartal	80.8*	58136*	3768*	86.2*	2153*	II quarter
III kvartal	88.5	63676	3622	82.7	2065	III quarter
IV kvartal	84.8	61056	3370	76.3	1907	IV quarter

/ nastavak/

/ continued /

	Indeks Index	Nove narudžbe na zgradama u hilj. EUR New orders on buildings, thous. EUR	Indeks Index	Nove narudžbe na ostalim građevinama u hilj. EUR New orders on other buildings, thous. EUR	
2006	116.6	99327	48.8	60720	2006
2007	164.5	140006	59.1	73539	2007
2008	100	85145	100	124524	2008
2008 I kvartal	128.5	27354	92.3	28722	2008 I quarter
II kvartal	133.4	28385	121.0	37686	II quarter
III kvartal	59.8	12730	68.3	21248	III quarter
IV kvartal	78.3	16676	118.4	36868	IV quarter
2009 I kvartal	60.6	12890	38.5	11979	2009 I quarter
II kvartal	9.7	2065	90.8*	28260*	II quarter
III kvartal	103.2	21960	95.3	29677	III quarter
IV kvartal	46.5	9901	78.6	24478	IV quarter

**SPOLJNA TRGOVINA / EXTERNAL TRADE <sup>1)</sup>**  
**Izvoz i uvoz po zemljama, u hilj. EUR / Exports and imports by countries, thous EUR**

	Izvoz / Export			Uvoz / Import			
	I	I	Indeks / Index	I	I	Indeks / Index	
	2009	2010	<u>I 2010</u> I 2009	I 2009	2010	<u>I 2010</u> I 2009	
<b>UKUPNO</b>	<b>31789.4</b>	<b>13556.9</b>	<b>42.6</b>	<b>103943.4</b>	<b>73913.3</b>	<b>71.1</b>	<b>TOTAL</b>
<b>Evropa</b>	<b>31539.9</b>	<b>13482.2</b>	<b>42.7</b>	<b>100592.0</b>	<b>66786.7</b>	<b>66.4</b>	<b>Europe</b>
Albanija	197.5	473.3	239.7	802.6	467.5	58.2	Albania
Austrija	106.5	215.9	202.7	4207.8	2399.0	57.0	Austria
Belgija-Luxemburg	26.1	0.0	0.0	385.9	631.3	163.6	Belgium – Luxembourg
BiH (sa Rep. Srpskom)	720.7	839.9	116.5	4933.0	5808.1	117.7	B&H (with RS)
Bugarska	0.0	0.0	0.0	237.3	278.9	117.5	Bulgaria
Velika Britanija	108.7	12.0	11.0	172.2	315.6	183.3	Great Britain
Grčka	12791.8	862.0	6.7	4562.2	5013.4	109.9	Greece
Danska	0.0	0.0	0.0	101.8	25.1	24.7	Denmark
Italija	7127.4	763.9	10.7	4594.4	3385.6	73.7	Italy
Mađarska	2599.6	68.7	2.6	2197.5	1180.6	53.7	Hungary
Njemačka	538.3	93.9	17.4	5348.2	4287.8	80.2	Germany
Slovenija	860.3	1721.1	200.1	5389.7	3329.5	61.8	Slovenia
Poljska	0.0	39.9	0.0	432.8	613.5	141.8	Poland
Makedonija	24.2	33.2	137.3	1240.0	741.0	59.8	Macedonia
Rumunija	12.5	311.7	2497.6	420.1	837.0	199.2	Romania
Ruska federacija	138.9	32.2	23.2	71.3	1903.9	2670.3	Russian Federation
Srbija <sup>2)</sup>	4507.2	6655.0	147.7	30657.2	21151.2	69.0	Serbia
Hrvatska	207.1	69.8	33.7	6692.8	5117.1	76.5	Croatia
Francuska	23.7	168.2	711.4	1745.5	1697.9	97.3	France
Holandija	365.4	130.7	35.8	2775.2	1777.6	64.1	Netherlands
Češka Republika	383.3	0.0	0.0	2763.2	511.9	18.5	Czech Republic
Švajcarska	29.7	84.9	285.7	16151.3	1669.0	10.3	Switzerland
Švedska	9.0	0.0	0.0	228.1	154.8	67.9	Sweden
Španija	0.0	0.0	0.0	738.6	861.9	116.7	Spain
Turska	8.1	25.4	313.6	1479.8	945.3	63.9	Turkey
Ostale zemlje	754.1	880.6	116.8	2263.6	1682.4	74.3	Other countries
<b>Azija</b>	<b>2.7</b>	<b>54.0</b>	<b>2029.3</b>	<b>2351.7</b>	<b>3845.5</b>	<b>163.5</b>	<b>Asia</b>
Irak	0.0	0.0	0.0	0.0	0.0	0.0	Iraq
Izrael	0.5	0.0	0.0	136.4	0.3	0.2	Israel
Indija	0.0	0.0	0.0	15.5	38.7	249.5	India
Indonezija	0.0	0.0	0.0	10.2	17.9	176.0	Indonesia
Japan	2.1	0.0	0.0	172.7	1215.9	703.9	Japan
Kina	0.0	0.0	0.0	1680.6	2191.8	130.4	China
Koreja	0.0	0.0	0.0	19.0	203.8	1074.5	Korea
Tajland	0.0	0.0	0.0	78.8	53.0	67.2	Thailand
Hong Kong	0.0	0.0	0.0	48.5	0.7	1.4	Hong Kong
Ostale zemlje	0.0	54.0	0.0	190.1	123.4	64.9	Other countries
<b>Afrika</b>	<b>215.2</b>	<b>13.1</b>	<b>6.1</b>	<b>25.9</b>	<b>15.4</b>	<b>59.5</b>	<b>Africa</b>
Egipat	215.2	5.2	2.4	6.2	14.8	238.1	Egypt
Etiopija	0.0	0.0	0.0	0.0	0.0	0.0	Ethiopia
Libijska Araps.Džamah.	0.0	0.0	0.0	0.0	0.0	0.0	Libyan Arab.Jamahiriya
Maroko	0.0	0.0	0.0	13.4	0.0	0.0	Morocco
Tunis	0.0	0.0	0.0	0.0	0.0	0.0	Tunis
Ostale zemlje	0.0	7.9	0.0	6.3	0.6	10.2	Other countries
<b>Amerika</b>	<b>31.6</b>	<b>7.7</b>	<b>24.3</b>	<b>973.8</b>	<b>3256.7</b>	<b>334.4</b>	<b>America</b>
Kanada	31.6	0.0	0.0	80.4	61.2	76.1	Canada
Panama	0.0	0.0	0.0	28.0	0.0	0.0	Panama
SAD	0.0	7.7	0.0	286.4	765.9	267.5	USA
Argentina	0.0	0.0	0.0	8.7	54.3	624.9	Argentina
Brazil	0.0	0.0	0.0	496.6	2058.9	414.6	Brazil
Ekvador	0.0	0.0	0.0	72.6	297.4	409.8	Ecuador
Kolumbija	0.0	0.0	0.0	0.0	0.0	0.0	Columbia
Peru	0.0	0.0	0.0	0.0	0.0	0.0	Peru
Devičanska ostrva	0.0	0.0	0.0	0.5	0.0	0.0	The Virgin Islands
Ostale zemlje	0.0	0.0	0.0	0.7	19.0	2752.2	Other countries
<b>Australija i Okeanija</b>	<b>0.0</b>	<b>0.0</b>	<b>0.0</b>	<b>0.0</b>	<b>9.0</b>	<b>0.0</b>	<b>Australia and Oceania</b>
Australija	0.0	0.0	0.0	0.0	9.0	0.0	Australia
Novi Zeland	0.0	0.0	0.0	0.0	0.0	0.0	New Zealand
Ostale zemlje	0.0	0.0	0.0	0.0	0.0	0.0	Other countries

<sup>1)</sup> Predhodni podaci<sup>2)</sup> Za 2009 bez podataka za Kosovo i Metohiju<sup>1)</sup> Previous data<sup>2)</sup> Without data for Kosovo and Metohia in 2009



**SPOLJNA TRGOVINA / EXTERNAL TRADE**  
**Izvoz i uvoz robe, hilj. EUR / Exports and imports of goods, thous EUR**

	Izvoz / Export			Uvoz / Import			
	I	I	Indeks / Index	I	I	Indeks / Index	
	2009	2010	I 2010 I 2009	2009	2010	I 2010 I 2009	
<b>Ukupno</b>	<b>31789.4</b>	<b>13556.9</b>	<b>42.6</b>	<b>103943.4</b>	<b>73913.3</b>	<b>71.1</b>	<b>Total</b>
Zive zivotinje	0.0	0.0	0.0	1013.2	1253.5	123.7	Live animals
Meso i drugi klanci proizvodni za jelo	170.0	292.4	172.0	4986.8	4513.3	90.5	Meat and edible meat offal
Ribe, ljuskari, mekušci i ostali vodeni beskičmenjaci	6.7	4.8	72.7	224.9	340.0	151.2	Fish and crustaceans, molluscs and other aquatic invertebrates
Mlijeko i proizvodi od mlijeka, živinska i ptičja jaja, prirodni med, jestivi proizvodi životinskog porijekla, nepomenuti niti obuhvaćeni na drugom mjestu	0.0	0.0	0.0	2202.7	2052.0	93.2	Dairy produce; birds' eggs; natural honey; edible products of animal origin, not elsewhere specified or included
Proizvodi životinskog porijekla, na drugom mjestu nepomenuti niti obuhv.	0.0	0.0	0.0	0.6	26.6	4825.0	Products of animal origin, not elsewhere specified or included
Živo drveće i druge biljke; lukovice, korijenje i slično; siječeno cvijeće i ukrasno lišće	0.0	0.0	0.0	86.9	136.8	157.3	Live trees and other plants; bulbs, roots and the like; cut flowers and ornamental foliage
Povrće, korijenje i krtole za jelo	81.4	30.1	37.0	470.1	346.9	73.8	Edible veg. and certain roots and tub.
Voće za jelo, uključujući jezgrasto voće; kore agruma ili dinja i lubenica	2.5	102.4	4136.5	636.1	745.0	117.1	Edible fruit and nuts; peel of citrus fruits or melons
Kafa, čaj, mate čaj i začini	0.0	0.3	0.0	822.6	1243.2	151.1	Coffee, tea, maté and spices
Žitarice	0.0	0.0	0.0	604.1	253.6	42.0	Cereals
Proizvodi mlinarske industrije; slad; skrob; inulin; gluten od pšenice	91.9	114.2	124.2	896.1	670.1	74.8	Products of the milling industry; malt; starches; inulin; wheat gluten
Uljano sjeme i plodovi; razno zrnevlje, sjeme i plodovi; industrijsko i ljekovito bilje; slama i stočna hrana (kabasta)	12.0	0.0	0.0	134.7	222.0	164.8	Oil seeds and oleaginous fruits; miscel-laneous grains, seeds and fruit; industrial or medicinal plants; straw and fodder
Seljak:gume, smole i ostali biljni sokovi i ekstrakti	0.0	0.0	0.0	0.4	5.3	1486.2	Lac; gums, resins and other vegetable saps and extracts
Biljni materijali za pletarstvo; biljni proiz na drugom mjestu nepomenuti niti obuh.	0.0	0.0	0.0	0.5	0.2	50.5	Vegetable plaiting materials; vegetable produc. not elsewhere specified or incl.
Masnoće i ulja životinskog ili biljnog porijekla i proizvodi njihovog razlaganja; prerađene jestive masnoće; voskovi životinskog i biljnog porijekla	0.0	9.4	0.0	766.8	850.0	110.8	Animal or vegetable fats and oils and their cleavage products; prepared edible fats; animal or vegetable waxes
Preradevine od mesa, riba, ljuskara, mekušaca ili ostalih vodenih beskičmenjaka	198.0	241.0	121.7	1043.0	1044.8	100.2	Preparations of meat, of fish or of crustaceans, molluscs or other aquatic invertebrates
Šećer i proizvodi od šećera	18.5	21.8	118.2	583.6	527.4	90.4	Sugars and sugar confectionery
Kakao i proizvodi od kaka	0.0	246.0	0.0	725.2	767.1	105.8	Cocoa and cocoa preparations
Proizvodi na bazi žitarica, brašna, skroba ili mlijeka; poslastičarski proizvodi	72.8	111.4	153.0	980.3	1140.5	116.3	Preparations of cereals, flour, starch or milk; pastrycooks' products
Proizvodi od povrća, voća, uključujući jezgrasto voće, i ostalih dijelova bilja	24.3	63.5	261.8	946.1	725.4	76.7	Preparations of vegetables, fruit, nuts or other parts of plants
Razni proizvodi za ishranu	99.4	181.3	182.3	995.0	1136.7	114.2	Miscellaneous edible preparations
Pića, alkoholi i sirće	1012.3	636.6	62.9	1736.3	1801.8	103.8	Beverages, spirits and vinegar
Ostaci i otpaci prehrambene industrije; pripremljena hrana za životinje	6.3	9.1	144.3	687.3	797.1	116.0	Residues and waste from the food industries; prepared animal fodder
Duvan i proizvodi zamjene duvana	406.7	0.0	0.0	893.5	800.7	89.6	Tobacco and manuf. tobacco substitut.
So;sumpor; zemlja i kamen;gips,kreč i cement	29.0	245.2	844.1	1470.2	1134.6	77.2	Salt; sulphur; earths and stone; plastering materials, lime and cement
Rude, zgure i pepeo	0.0	60.4	0.0	0.0	0.0	0.0	Ores, slag and ash
Mineralna goriva, mineralna ulja i proizvodi njihove destilacije;bitumenozne materije; mineralni voskovi	658.8	865.2	131.3	24776.8	11309.7	45.6	Mineral fuels, mineral oils and products of their distillation; bituminous substances; mineral waxes
Neorganski hemijski proizvodi; organska ili neorganska jedinjenja plemenitih metala, metala rijetkih zemlji, radioaktivnih elemenata i izotopa	4.5	24.4	541.1	142.9	2340.0	1637.7	Inorganic chemicals; organic or norga-nic compounds of precious metals, of rare-earth metals, of radioactive lemen-ts or of isotopes
Organski hemijski proizvodi	0.0	3.1	0.0	113.0	120.4	106.6	Organic chemicals
Farmaceutski proizvodi	629.9	321.3	51.0	2818.7	3722.5	132.1	Pharmaceutical products
Đubriva	0.0	0.0	0.0	64.0	128.2	200.3	Fertilisers
Ekstrati za štavljenje ili bojenje;tanini i njihovi derivati;boje, pigmenti i ostale materije za bojenje; boje i lakovi; kitovi i ostale zaptivne mase;mastila	2.0	6.1	310.9	772.4	415.5	53.8	Tanning or dyeing extracts; tannins and their derivatives; dyes, pigments and other colouring matter; paints and varnishes; putty and other mastics; inks
Eterična ulja i rezinoidi; parfimerijski, kozmetički i toaletni proizvodi	201.9	108.9	53.9	939.4	809.3	86.1	Essential oils and resinoids; perfumery, cosmetic or toilet preparations

**SPOLJNA TRGOVINA / EXTERNAL TRADE**  
**Izvoz i uvoz robe, hilj. EUR / Exports and imports of goods, thous EUR**

/ nastavak /				/continued /		
	Izvoz / Export			Uvoz / Import		
	I 2009	I 2010	Indeks / Index I 2010 I 2009	I 2009	I 2010	Indeks / Index I 2010 I 2009
Sapun, organska površinska aktivna sredstva, preparati za pranje, preparati za podmazivanje, vještački voskovi, pripremljeni voskovi, preparati za poliranje i čišćenje, svijeće i slični proizvodi, paste za modelovanje "zubarski voskovi" i zubarski preparati n	0.6	2.6	415.7	762.0	901.9	118.4
Bjelančevinaste materije; modifikovani skrobovi; lijepkovi; enzimi	0.0	0.1	0.0	87.8	102.7	117.1
Eksplzivni; pirotehnički proizvodi; šibice; piroforme legure; zapaljivi preparati	0.0	5.7	0.0	77.2	11.7	15.1
Proizvodi za fotografske ili kinematografske svrhe	4.6	2.1	46.2	44.7	77.0	172.3
Razni proizvodi hemijske industrije	0.0	5.3	0.0	1545.2	395.9	25.6
Plastične mase i proiz. od plastičnih masa	4.2	58.9	1416.4	2380.0	1571.4	66.0
Kaučuk i proizvodi od kaučuka i gume	4.5	0.3	6.4	546.9	602.5	110.2
Sirova sitna i krupna koža, sa dlakom ili bez dlake (osim krzna) i štavljena koža	52.4	268.6	512.9	37.9	1.8	4.7
Proizvodi od kože, sedlarski i sarački proizvodi, predmeti za putovanje, ručne torbe i slični kontejneri i proizvodi od životinjskih crijeva (osim svilenoj ketguta)	2.0	6.8	345.8	223.0	182.4	81.8
Prirodno i vještačko krzno; proizvodi od krzna	0.0	0.0	0.0	0.0	0.6	0.0
Drvo i proizvodi od drveta; drveni ugalj	501.2	345.9	69.0	956.5	843.6	88.2
Pluta i proizvodi od plute	0.0	0.0	0.0	1.7	47.8	2832.7
Proizvodi od slame, esparta ili ostalih materijala za pletariju; korparskih i pletarskih proizvoda	0.0	0.0	0.0	9.7	3.1	31.7
Celuloza od drveta ili drugih vlaknastih celuloznih materijala; hartija i karton (otpaci i ostaci) za ponovnu preradu	24.0	30.9	128.8	0.0	0.0	0.0
Hartija i karton; proizvodi od hartijine pulpe, hartije ili kartona	70.5	104.7	148.5	1658.5	1591.6	96.0
Štampane knjige, novine, slike i ostali proizvodi grafičke industrije, rukopisi, kucani tekstovi i planovi	208.1	50.3	24.2	1061.3	730.5	68.8
Svila	0.0	0.0	0.0	0.1	0.0	0.0
Vuna, fina ili gruba životinjska dlaka, predivo i tkanine od konjske dlake	0.0	0.0	0.0	2.8	0.2	8.2
Pamuk	2.4	0.4	15.4	62.9	11.7	18.5
Ostala biljna tekstilna vlakna; predivo od hartije i tkanine od prediva od hartije	0.0	0.0	0.0	0.8	0.3	35.8
Vještački ili sintetički filamenti	0.0	0.0	0.0	36.6	4.7	12.7
Vještačka ili sintetička vlakna, sječena	0.0	0.0	0.0	83.2	17.0	20.4
Vata, filc i netkani materijal; specijalna prediva; kanapi, užad, konopci i kablovi i proizvodi od njih	0.0	0.0	0.0	53.4	71.4	133.8
Tepisi i ostali tekstilni podni pokrivači	0.0	0.0	0.0	108.9	105.8	97.2
Specijalne tkanine; taftovani tekstilni proizv.; čipke; tapiserije; pozamanterija, vez	0.0	0.0	0.0	4.2	5.1	123.1
Tekst. tkanine, impregnisane, premazane, prevučene, prekrivene ili laminirane, tekstilni proizvodi pogodni za tehn. svrhe	0.1	0.0	0.0	25.6	10.0	39.1
Pleteni ili kukičani materijali	0.0	0.0	0.0	4.5	0.0	0.0
Odjeća i pribor za odjeću, pleteni ili kukičani	0.0	11.0	0.0	564.3	523.3	92.7
Odjeća i pribor za odjeću, osim pletenih ili kukičanih proizvoda	5.2	76.7	1477.3	1020.3	1145.1	112.2
Ostali gotovi proizvodi od tekstila; setovi, iznošena, dotrajala odjeća i dotrajali proizvodi od tekstila; krpe	0.8	1.9	246.7	248.8	195.5	78.6
Obuća, kamašne i slični proizvodi; dijelovi tih proizvoda	13.5	0.0	0.0	987.2	865.2	87.6

## SPOLJNA TRGOVINA / EXTERNAL TRADE

## Izvoz i uvoz robe, hilj. EUR / Exports and imports of goods, thous EUR

/ nastavak /	Izvoz / Export			Uvoz / Import			/ continued /
	I	I	Indeks / Index	I	I	Indeks / Index	
	2009	2010	$\frac{I\ 2010}{I\ 2009}$	2009	2010	$\frac{I\ 2010}{I\ 2009}$	
Šeširi, kape i ost. pokrivke za glavu i djel.	0.0	0.9	0.0	9.0	274.2	3041.8	Headgear and parts thereof
Kišobrani, suncobrani, štapovi, štapovi-stolice, bičevi, korbači i njihovi dijelovi	0.0	0.6	0.0	53.2	2.9	5.5	Umbrellas, sun umbrellas, walking-sticks, seat-sticks, whips, riding-crops and parts thereof
Perje i paperje, preparirano i proizvodi izradjeni od perja i paperja; vještačko cvijeće; proizvodi od ljudske kose	0.0	0.0	0.0	10.0	2.4	24.4	Prepared feathers and down and arti-cles made of feathers or of down; arti-ficial flowers; articles of human hair
Proizvodi od kamena, gipsa, cementa, betona, azbesta, liskuna ili sličnih mater.	27.2	40.1	147.1	604.2	404.6	67.0	Articles of stone, plaster, cement, asbestos, mica or similar materials
Keramički proizvodi	0.0	0.0	0.0	1630.3	867.2	53.2	Ceramic products
Staklo i proizvodi od stakla	0.8	12.3	1613.4	603.6	616.0	102.1	Glass and glassware
Prirodni ili kultivisani biseri, drago ili polu-drugo kamenje, plemeniti metali, metali platinirani plemenitim metalima, i proizvodi od njih; imitacije nakita; metalni novac	1.4	5.6	387.2	103.6	58.4	56.4	Natural or cultured pearls, precious or semi-precious stones, precious metals, metals clad with precious metal, and artic. thereof; imitation jewellery; coin
Gvožđe i čelik	2338.6	882.5	37.7	5697.7	865.9	15.2	Iron and steel
Proizvodi od gvožđa i čelika	1046.7	316.0	30.2	4585.4	1796.1	39.2	Articles of iron or steel
Bakar i proizvodi od bakra	0.0	424.2	0.0	70.5	40.7	57.7	Copper and articles thereof
Nikl i proizvodi od nikla	0.0	0.0	0.0	12.2	0.0	0.0	Nickel and articles thereof
Aluminijum i proizvodi od aluminijuma	21899.4	6486.5	29.6	1138.7	853.6	75.0	Aluminium and articles thereof
Olovo i proizvodi od olova	0.0	0.0	0.0	0.7	0.4	58.3	Lead and articles thereof
Cink i proizvodi od cinka	0.0	0.0	0.0	4.3	1.6	36.3	Zinc and articles thereof
Kalaj i proizvodi od kalaja	0.0	0.0	0.0	0.8	0.1	18.0	Tin and articles thereof
Ostali prosti metali; kremeti; proiz. od njih	0.0	0.0	0.0	6.7	5.3	79.4	Other base metals; cermets; art. thereof
Alati, nožarski proizvodi, kašike i viljuške, od prostih metala; njihovi dijelovi od prostih metala	0.5	0.8	160.2	228.3	142.6	62.5	Tools, implements, cutlery, spoons and forks, of base metal; parts thereof of base metal
Razni proizvodi od prostih metala	41.6	48.7	117.2	331.4	254.4	76.8	Miscellaneous articles of base metal
Reaktori, kotlovi, mašine i mehanički uređaji i njihovi dijelovi	1090.1	358.8	32.9	6831.9	3654.3	53.5	Reactors, boilers, machinery and mechanical appliances; parts ther.
Električne mašine i oprema i njihovi dijelovi; aparati za snimanje i reprodukciju zvuka; televizijski aparati za snimanje i reprodukciju slike i zvuk, dijelovi i pribor za te proizvode	140.0	148.5	106.1	5406.1	4131.9	76.4	Electrical machinery and equipment and parts thereof; sound recorders and reproducers, television image and sound recorders and reproducers, and parts and accessories of such articles
Šinska vozila i njihovi dijelovi; željeznički i tramvajski kolosječni sklopovi i pribor i njihovi dijelovi, mehanička i elektromehanička signalna oprema za saobraćaj svih vrsta	0.0	3.0	0.0	187.2	43.7	23.4	Railway or tramway locomotives, rolling-stock and parts thereof; railway or tramway track fixtures and fittings and parts thereof; mechanical (including electro-mechanical) traffic signalling equipment of all kinds
Vozila, osim željezničkih ili tramvajskih šinskih vozila i njihovi dijelovi i pribor	184.8	26.9	14.6	6451.2	4675.8	72.5	Vehicles other than railway or tramway rolling-stock, and parts and acc. Ther.
Vazduhopl., kosmičke letjelice i njihovi dj.	63.6	54.0	84.9	1021.2	1025.8	100.5	Aircraft, spacecraft, and parts thereof
Brodovi, čamci i ploveće konstrukcije	16.3	0.0	0.0	40.3	249.0	617.5	Ships, boats and floating structures
Optički, fotografski, kinematografski, mjerni, kontrolni, precizni, medicinski i hirurški instrumenti i aparati; njihovi dijelovi i pribor	13.0	16.4	126.0	1150.1	715.6	62.2	Optical, photographic, cinematograph-ic, measuring, checking, precision, medical or surgical instruments and apparatus; parts and accessories ther.
Časovnici i njihovi dijelovi	1.0	11.9	1237.7	64.8	56.1	86.5	Clocks and watches and parts thereof
Muzički instrumenti, dijelovi i pribor ovih proizvoda	0.0	0.0	0.0	13.1	69.1	527.0	Musical instruments; parts and accessories of such articles
Namještaj, posteljina, madraci, nosači madraca, jastuci i slični punjeni proizvodi; lampe i druga svjetleća tijela, na drugom mjestu nepomenuti ili uključeni; osvijetljeni znaci, osvijetljene pločica imenima i slično, montažne zgrade	68.2	29.8	43.6	2165.9	1394.2	64.4	Furniture; bedding, mattresses, mattress supports, cushions and similar stuffed furnishings; lamps and lighting fittings, not elsewhere specified or included; illuminated signs, illuminated name-plates and the like; prefabricated build.
Igračke, rekviziti za društvene igre i sport; njihovi dijelovi i pribor	0.0	12.6	93727.1	273.0	186.1	68.2	Toys, games and sports requisites; parts and accessories thereof
Razni proizvodi	2.4	2.3	93.7	106.6	116.5	109.3	Miscellaneous manufactured articles
Predmeti umjetnosti, kolekcija i starina	231.1	2.3	1.0	3.0	4.3	143.3	Works of art, collectors' pieces and ant.
Nerazvrstani	0.0	1.2	0.0	8.6	4.7	55.3	Other

**UNUTRAŠNJA TRGOVINA / DOMESTIC TRADE**  
**PROMET U TRGOVINI NA MALO / TURNOVER IN RETAIL TRADE**

Ø 2009 = 100

	Indeks <sup>1)</sup> / <i>Index</i>	PROMET u hilj.EUR / <i>Turnover in thous. EUR</i>
2006	68.2	581942
2007	94.7	808258
2008	109.9	937340
2009	100.0	853203
2009 <sup>2)</sup>		
I	81.4	57894
II	84.0	59756
III	82.7	58774
IV	96.1	68329
V	94.7	67321
VI	102.8	73123
VII	125.2	89003
VIII	131.3	93379
IX	102.3	72735
X	100.2	71213
XI	89.4	63536
XII	109.9	78140
2010		
I	73.7	52.409
<b>I 2010/I 2009</b>	<b>90.5</b>	<b>90.5</b>

<sup>1)</sup> Indeks prometa po tekućim cijenama.<sup>2)</sup> Prethodni podaci<sup>1)</sup> Index of turnover at current prices.<sup>2)</sup> Preliminary data

	PROMET U TRGOVINI NA MALO / TURNOVER IN RETAIL TRADE						
	PROMET u hilj. EUR <i>Turnover in thous. EUR 2010</i>	tekući mjesec na prethodni <i>Current month compared to the previous month</i>		mjesec 2010. na isti mjesec 2009. <i>Month in 2010 compared to the same month 2009</i>		mjesec 2010. na Ø 2009 <i>Month in 2010 to Ø 2009</i>	
		indeks prometa u tekućim cijenama <i>Index of turnover at current prices</i>	indeks prometa u stalnim cijenama <i>Index of turnover at constant prices</i>	indeks prometa u tekućim cijenama <i>Index of turnover at current prices</i>	indeks prometa u stalnim cijenama <i>Index of turnover at constant prices</i>	indeks prometa u tekućim cijenama <i>Index of turnover at current prices</i>	indeks prometa u stalnim cijenama <i>Index of turnover at constant prices</i>
2010 I	52409	67.1	67.5	90.5	92.4	73.7	74.2

<sup>1)</sup> Prethodni podaci<sup>1)</sup> Preliminary data

**PRODAJA I OTKUP PROIZVODA POLJOPRIVREDE, ŠUMARSTVA I RIBARSTVA**  
**SALE AND BUYING OUT OF PRODUCTS FROM AGRICULTURE, FORESTRY AND FISHERY**

U hiljadama EUR

In thousands EUR

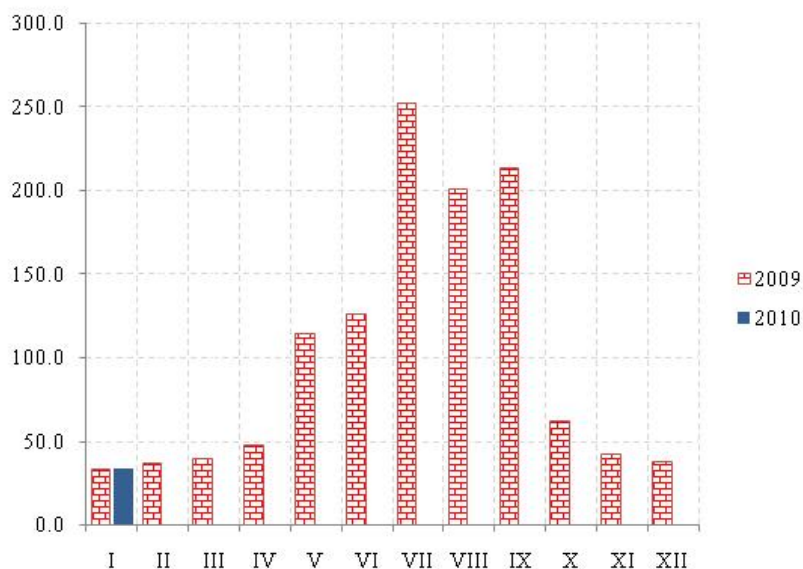
	Indeks Index Ø 2009 =100	Ukupna vrijednost Total value	Poljoprivreda i šumarstvo / Agriculture and forestry				
			žita Cereals	industrijsko bilje Industrial crops	povrće <sup>1)</sup> Vegetables	voće Fruit	grožđe Vine
2005	74.4	15689	2	1032	146	1128	1480
2006	73.2	15422	11	-	142	1127	1208
2007	78.4	16523	-	831	284	1000	1778
2008	95.8	20198	1	-	491	1749	1897
2009	100.0	21081	51	301	296	1640	1493
2009							
I	74.1	1302	-	301	21	5	-
II	60.9	1070	-	-	36	-	-
III	61.6	1082	-	-	9	-	-
IV	70.6	1241	-	-	7	-	-
V	68.0	1195	-	-	12	-	-
VI	100.2	1760	-	-	7	483	-
VII	105.7	1857	-	-	83	7	518
VIII	140.3	2465	-	-	14	74	812
IX	114.3	2009	27	-	39	2	163
X	117.9	2072	19	-	35	5	-
XI	181.9	3196	-	-	13	1018	-
XII	104.3	1832	5	-	20	46	-
2010							
I	52.1	915	112	-	28	1	-
<b>I 2010/I 2009</b>	<b>70.3</b>	<b>70.3</b>	<b>-</b>	<b>-</b>	<b>133.3</b>	<b>20</b>	<b>-</b>

/ nastavak /

/ continued /

	Poljoprivreda i šumarstvo / Agriculture and forestry						Ribarstvo Fishery
	preradevine voća i grožđa Products of fruit and vine	Stoka Livestock	živina i jaja Poultry and eggs	mlijeko i mliječni proizvodi Milk and milk products	koža i vuna Leather and wool	ostali proizvodi Other products	riba svježa Fresh fish
2005	67	4762	814	4762	8	1173	315
2006	100	5437	732	5379	-	969	317
2007	171	5912	800	4640	-	810	297
2008	189	8017	1082	5204	-	1312	256
2009	84	9170	1725	4517	-	582	1222
2009							
I	-	439	114	356	-	-	66
II	-	438	116	412	-	-	68
III	8	482	102	351	-	24	106
IV	-	502	195	348	-	53	136
V	5	506	144	384	-	45	99
VI	10	517	189	399	-	35	120
VII	-	549	131	445	-	-	124
VIII	12	576	192	429	-	225	131
IX	-	1166	148	371	-	-	93
X	8	1453	119	363	-	-	70
XI	-	1457	124	321	-	200	63
XII	41	1085	151	338	-	-	146
2010							
I	-	232	96	341	-	25	80
<b>I 2010/I 2009</b>	<b>-</b>	<b>52.8</b>	<b>84.2</b>	<b>95.8</b>	<b>-</b>	<b>-</b>	<b>121.2</b>

<sup>1)</sup> Uključeni i krompir i pasulj.<sup>1)</sup> includes potatoes and beans.

**UGOSTITELJSTVO / CATERING****Promet u ugostiteljstvu / Turnover in catering**

Ø 2008 = 100

	Indeks <sup>1)</sup> <i>Index</i>	Promet u hilj. EUR <i>Turnover in thousands EUR</i>
2005	49.4	65552
2006	97.0	128720
2007	102.5	136039
2008	107.6	142833
2009	100	132768
2009		
I	32.5	3601
II	36.7	4055
III	39.0	4311
IV	47.4	5244
V	114.2	12633
VI	125.5	13888
VII	251.6	22199
VIII	200.6	27775
IX	212.6	23518
X	61.3	6777
XI	41.9	4637
XII	37.3	4130
<b>2010</b>		
I	33.3	3687
<b>I 2010/I 2009</b>	102.4	102.4

**TURIZAM / TOURISM****Dolasci i noćenja turista po zemljama i prema vrsti mjesta***Tourist arrivals and tourist overnight stays by country and type of resort*

	2009	Januar January		2009		2010	
		2009	2010	XI	XII	I	
<b>Dolasci turista</b>							<b>Tourist arrivals</b>
<b>Ukupno</b>	<b>1207694</b>	<b>17564</b>	<b>14200</b>	<b>14909</b>	<b>14054</b>	<b>14200</b>	<b>Total</b>
Domaći	163680	6430	5062	3241	4587	5062	Domestic
Strani	1044014	11134	9138	11668	9467	9138	Foreigners
<b>Noćenja turista – ukupno</b>	<b>7552006</b>	<b>84398</b>	<b>57097</b>	<b>63719</b>	<b>47523</b>	<b>57097</b>	<b>Tourist overnight stays – total</b>
<b>Noćenja domaćih turista</b>	<b>856332</b>	<b>25279</b>	<b>18620</b>	<b>16828</b>	<b>8072</b>	<b>18620</b>	<b>Overnight stays of domestic tourists</b>
<b>Noćenja stranih turista</b>	<b>6695674</b>	<b>59119</b>	<b>38477</b>	<b>46891</b>	<b>39451</b>	<b>38477</b>	<b>Overnight stays of foreigners</b>
Albanija	192145	4836	4041	2616	2412	4041	Albania
Austrija	57588	297	203	478	240	203	Austria
Belgija	46834	35	117	72	61	117	Belgium
Bosna i Hercegovina	778455	20413	6962	9956	9080	6962	Bosnia and Herzegovina
Bugarska	23307	152	401	386	512	401	Bulgaria
Češka Republika	171643	59	17	139	71	17	Czech Republic
Danska	5371	76	44	95	20	44	Danmark
Finska	7777	30	12	85	50	12	Finland
Francuska	193983	307	425	986	248	425	France
Grčka	5498	147	118	168	193	118	Greece
Holandija	27647	353	86	275	112	86	Netherlands
Hrvatska	59798	1888	1252	1659	1423	1252	Croatia
Italija	225976	2211	1953	1553	548	1953	Italy
Mađarska	205259	405	50	290	168	50	Hungary
Makedonija	153530	5942	4207	5515	3709	4207	Macedonia
Norveška	43620	749	75	224	99	75	Norway
Njemačka	109893	631	344	620	489	344	Germany
Poljska	123557	80	96	131	72	96	Poland
Rumunija	38061	100	203	190	99	203	Romania
Rusija	1060510	4644	4115	2451	2741	4115	Russia
Slovačka	61841	155	17	55	16	17	Slovakia
Slovenija	84578	633	427	1177	780	427	Slovenia
Srbija <sup>1)</sup>	2298720	10672	8159	10678	10327	8159	Serbia <sup>1)</sup>
Švajcarska	11887	89	70	109	66	70	Switzerland
Švedska	47696	119	81	160	86	81	Sweden
Ukrajina	89681	229	368	115	89	368	Ukraine
Velika Britanija	79418	775	326	913	314	326	Great Britain
Ostale evropske zemlje	418682	3092	3204	3794	4269	3204	Other European countries
Izrael	20163	43	48	195	39	48	Israel
Kanada	6120	91	51	145	42	51	Canada
SAD	22645	427	653	884	652	653	USA
Ostale vanevropske zemlje	22791	621	352	777	424	352	Other non-European countries
<b>Noćenja po vrstama mjesta – ukupno</b>	<b>7552006</b>	<b>84398</b>	<b>57097</b>	<b>63719</b>	<b>47523</b>	<b>57097</b>	<b>Overnight stays by type of tourist resorts – total</b>
Glavni administrativni centar	103464	7699	6473	9389	7836	6473	Main administrative center
Primorska	7244830	55637	33730	46239	32619	33730	Coastal
Planinska	99500	13553	12137	3873	3990	12137	Mountain
Ostala turistička mjesta	102208	7482	4637	4070	2946	4637	Other tourist resorts
Ostala mjesta	2004	27	120	148	132	120	Other places
<b>Primorska mjesta</b>							<b>Coastal resorts</b>
Bar	964062	14998	14756	16962	18211	14756	Bar
Budva	3258649	14110	9039	8582	6315	9039	Budva
Kotor	316130	1995	898	1086	652	898	Kotor
Tivat	244446	2379	1394	3912	2361	1394	Tivat
Ulcinj	656544	3595	2303	103	114	2303	Ulcinj
Herceg Novi	1804999	18560	5340	15594	4966	5340	Herceg Novi

**TURIZAM / TOURISM****DOLASCI I NOĆENJA GOSTIJU PO VRSTAMA TURISTIČKIH MJESTA  
TOURIST ARRIVALS AND TOURIST OVERNIGHT STAYS BY TYPE OF PLACE**

	Dolasci / Arrivals					Noćenja / Nights				
	glavni grad <i>Capital</i>	primorska mjest <i>Coastal resorts</i>	planinska mjest <i>Mountain resorts</i>	ostala turistička mjest <i>Other tourist resorts</i>	ostala mjest <i>Other places</i>	glavni grad <i>Capital</i>	primorska mjest <i>Coastal resorts</i>	planinska mjest <i>Mountain resorts</i>	ostala turistička mjest <i>Other tourist resorts</i>	ostala mjest <i>Other places</i>
2005	29819	747734	19185	23599	120	53886	5022260	53577	82003	121
2006	39295	859904	26362	28144	223	74169	5691770	68424	101677	230
2007	45588	1010742	39158	37642	302	104986	6961444	105892	121871	337
2008	50393	1058825	38304	40229	365	111271	7459794	102560	120682	434
2009	49166	1081805	41161	34623	939	103464	7244830	99500	102208	2004
2009										
I	2924	8806	3928	1887	19	7699	55637	13553	7482	27
II	3582	11973	2580	1840	13	7126	69010	5968	6773	19
III	4279	10124	1829	2841	14	8492	64217	3611	6952	14
IV	2962	22520	1466	2696	80	5359	107784	2798	7514	127
V	4189	64173	3832	3079	73	7713	336828	7352	7427	134
VI	5072	100485	4486	4007	82	12219	707176	9622	12451	146
VII	4646	291835	5634	4150	132	12350	1932813	15974	12550	374
VIII	3230	384515	6956	4890	162	6277	2895082	17225	15987	201
IX	4385	149476	4724	4386	65	9821	874686	9882	12221	491
X	4840	24374	2644	1735	111	9183	122739	5652	5844	191
XI	4892	7395	1045	1466	111	9389	46239	3873	4070	148
XII	4165	6129	2037	1646	77	7836	32619	3990	2946	132
2010	2846	6328	3662	1295	69	6473	33730	12137	4637	120
I										
<b>I 2010/I 2009</b>	97.3	71.9	93.2	68.6	363.2	84.1	60.6	89.6	62.0	444.4

**DOLASCI I NOĆENJA TURISTA / TOURIST ARRIVALS AND TOURIST OVERNIGHT STAYS**

	Dolasci/Arrivals			Noćenja / Nights		
	ukupno / Total	domaći / Domestic	strani / Foreign	ukupno / Total	domaći / Domestic	strani / Foreign
2005	820457	548452	272005	5211847	3628337	1583510
2006	953928	576130	377798	5936270	3740179	2196091
2007	1133432	149294	984138	7294530	851045	6443485
2008	1188116	156904	1031212	7794741	828462	6966279
2009	1207694	163680	1044014	7552006	856332	6695674
2009						
I	17564	6430	11134	84398	25279	59119
II	19988	5562	14426	88896	22507	66389
III	19087	4375	14712	83286	17711	65575
IV	29724	6677	23047	123582	26725	96857
V	75436	12604	62742	359454	51364	308090
VI	114132	13659	100473	741614	67059	674555
VII	306397	33096	273301	1974061	196177	1777884
VIII	399753	42297	357456	2934772	283130	2651642
IX	163036	23069	139967	907092	110581	796511
X	33704	8083	25621	143609	30899	112710
XI	14909	3241	11668	63719	16828	46891
XII	14054	4587	9467	47523	8072	39451
2010						
I	14200	5062	9138	57097	18620	38477
<b>I 2010/I 2009</b>	80.8	78.7	82.1	67.7	73.7	65.1

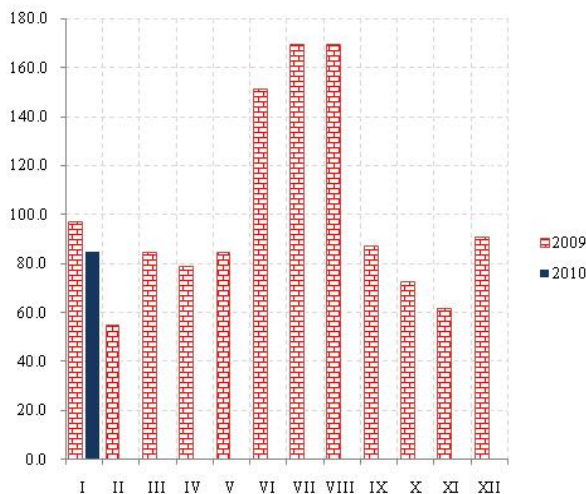


**SAOBRAĆAJ, SKLADIŠTENJE I VEZE**  
**TRANSPORT, STORAGE AND COMMUNICATIONS**

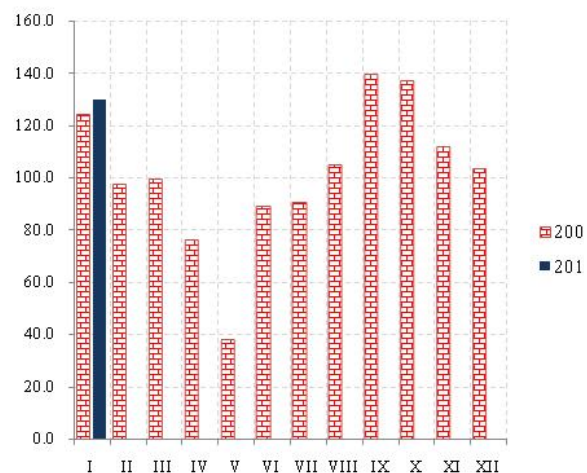
**Željeznički saobraćaj / Railway transport**

Ø 2008 = 100

**Putnički / Passengers**



**Robni / Goods**

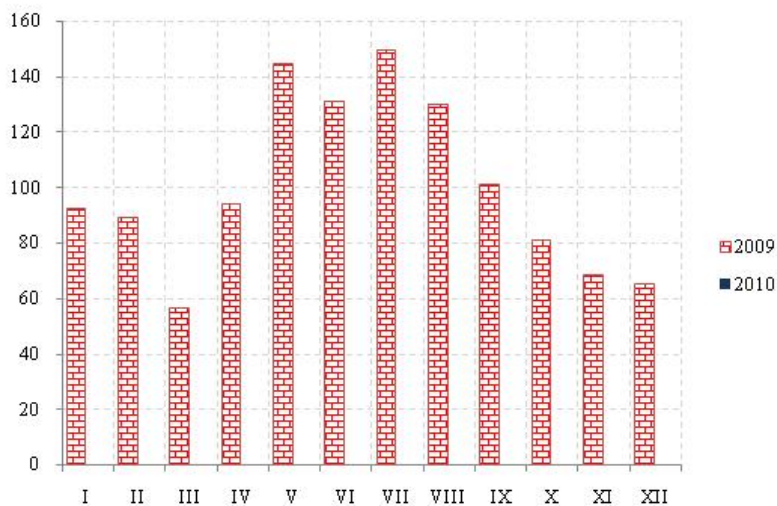


	ŽELJEZNIČKI SAOBRAĆAJ / RAILWAY TRANSPORT					
	Putnički / Passenger			Robni / Goods		
	indeks Index	putnici u 000 Passengers, thousands	putnički km u 000 Passenger kilometres in thousands	Indeks Index	prevoz robe u 000 t Goods in thousands tonnes	tonski km u 000 Tonne- kilometres in thousands
2005	123.8	1137	122920	132.5	1182	132782
2006	132.5	1067	131500	181.0	2494	182163
2007	110.8	999	110000	183.9	1761	184957
2008	125.9	1031	125000	192.8	1740	183854
2009	100.0	852	99200	100.0	854	100546
2009						
I	96.6	70	8000	124.3	88	10411
II	54.4	37	4500	97.1	58	8137
III	84.6	50	7000	99.5	80	8333
IV	78.6	50	6500	75.9	55	6360
V	84.6	65	7000	37.7	57	3162
VI	151.1	100	12500	88.9	57	7445
VII	169.2	120	14000	90.4	52	6743
VIII	169.2	115	14000	104.8	75	8782
IX	87.0	75	7200	139.5	88	11686
X	72.5	60	6000	137.1	83	11481
XI	61.4	50	5000	111.5	77	9351
XII	90.7	60	7500	103.3	84	8655
2010						
I	84.6	45	7000	130.0	78	10893
I 2010/I 2009	87.5	64.2	87.5	104.5	88.6	104.5

**SAOBRAĆAJ, SKLADIŠTENJE I VEZE**  
**TRANSPORT, STORAGE AND COMMUNICATIONS**

**Drumski saobraćaj - Putnički / Road transport - passengers**

Ø 2008 = 100

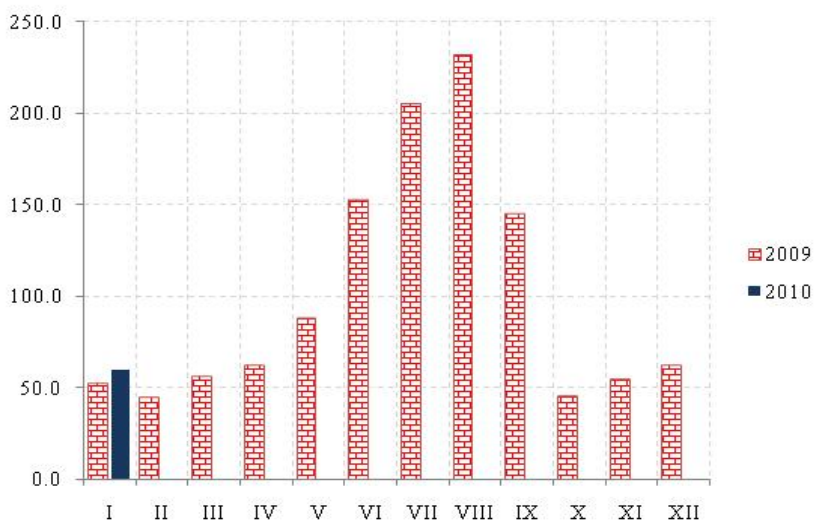


	DRUMSKI SAOBRAĆAJ / ROAD TRANSPORT							
	PUTNIČKI / PASSENGERS				ROBNI / GOODS			
	indeks Index	putnici u 000 Passengers, thous.	putnički km u 000 Passenger kilometres in thous.	autobuski km u 000 Bus kilometres in thous	indeks Index	roba u 000 tona Goods in thousands tonnes	tonski km u 000 Tonne- kilometres in thous.	kamionski km u 000 Truck kilometres in thous.
2005	83.2	4302	84883	9593	35.1	1857	61100	9365
2006	112.6	4825	114695	16809	41.8	1961	72724	15167
2007	138.5	5738	141247	17630	52.8	2131	91786	16269
2008	121.1	5503	123421	18068	78.8	2468	137058	14857
2009	100.0	5536	101928	16272	100.0	1724	179288	11667
2009								
I	92.2	370	7833	1093	59.1	160	8571	994
II	88.9	414	7545	1188	85.4	186	12365	1015
III	56.1	234	4763	894	85.4	196	12370	1016
IV	93.7	583	7960	1370	80.1	185	11601	1080
V	144.4	567	12262	1659	153.5	125	22237	998
VI	130.8	463	11107	1509	116.0	125	16800	904
VII	149.2	598	12677	1586	113.3	147	16417	1025
VIII	129.8	642	11028	1687	102.5	141	14850	866
IX	101.0	508	8576	1461	119.0	157	17246	1090
X	80.7	422	6852	1354	66.5	106	15074	858
XI	68.4	373	5817	1244	96.0	107	13915	916
XII	64.9	362	5508	1237	123.1	89	17842	905
2010								
I	...	...	...	...	...	...	...	...
I 2010/I 2009	...	...	...	...	...	...	...	...

**SAOBRAĆAJ, SKLADIŠTENJE I VEZE**  
**TRANSPORT, STORAGE AND COMMUNICATIONS**

Ø 2008 = 100

**Vazdušni saobraćaj - putnički / Air transport - passengers**



	GRADSKI SAOBRAĆAJ LOCAL TRANSPORT		VAZDUŠNI SAOBRAĆAJ, PROMET NA AERODROMIMA AIR TRANSPORT, TRAFFIC AT AIRPORTS		
	indeks Index	prevezeno putnika u 000 Passengers in thousands	PUTNIČKI / PASSENGERS		ROBNI / GOODS
			indeks Index	prevoz putnika Transport of passengers	prevoz robe u tonama Transport of goods in tonnes
2005	400.4	2177	73.6	697740	1011
2006	292.5	1591	87.9	833715	1067
2007	274.0	1491	108.1	1024491	1320
2008	284.6	1547	117.1	1109095	1490
2009	100.0	544	100.0	956405	1478
2009					
I	110.3	50	52.5	41882	47
II	123.5	56	44.6	35489	112
III	123.5	56	55.7	44424	65
IV	108.1	49	62.2	49502	83
V	108.1	49	87.8	69983	63
VI	59.6	27	152.5	121559	83
VII	87.3	26	205.7	163959	111
VIII	66.2	30	231.8	184744	77
IX	110.3	50	145.3	115783	75
X	112.5	51	45.2	36053	109
XI	112.5	51	54.3	43309	296
XII	108.1	49	62.4	49718	357
2010					
I	79.5	36	59.9	47754	47
I 2010/I 2009	72.0	72.0	114.0	114.0	100.0

SAOBRAĆAJ, SKLADIŠTENJE I VEZE / *TRANSPORT, STORAGE AND COMMUNICATIONS*POMORSKI SAOBRAĆAJ / *MARINE TRANSPORT*

	Prevoz robe / <i>Transport of goods</i>			Promet u lukama ( u tonama) / <i>Turnover in harbours (tonnes)</i>				
	Indeks <i>Index</i>	u 000 t <i>In thous. tonnes</i>	tonske milje u hilj.. <i>Tonne milles in thousands</i>	Indeks <i>Index</i>	ukupno <i>Total</i>	unutrašnji promet <i>Internal turnover</i>	izvoz <sup>1)</sup> <i>Export</i>	uvoz <sup>2)</sup> <i>Import</i>
2005	85.0	60	232	137.7	2039211	442	1166959	851211
2006	139.2	818	380	134.2	1988204	116	1027208	941905
2007	149.5	785	408	139.9	2071310	1825	791509	1280327
2008	128.9	595	352	131.6	1949409	8350	683990	1219948
2009	100	541	273	100	1481069	-	613696	829491
2009								
I	67.0	37	15	104.4	128880	-	55633	70514
II	60.4	45	14	96.0	118436	-	51933	64956
III	81.1	43	18	103.7	127957	-	43107	84850
IV	49.3	42	11	96.1	118617	-	42209	69515
V	72.7	49	17	98.4	121454	-	47305	72909
VI	51.5	51	12	100.3	123852	-	57424	65095
VII	230.3	45	52	108.4	133767	-	62765	68956
VIII	244.1	37	55	111.1	137129	-	54236	79868
IX	126.0	67	29	117.7	145229	-	50015	88445
X	80.6	46	18	101.8	125677	-	58857	64865
XI	71.8	43	16	84.0	103660	-	50309	50467
XII	66.1	35	15	78.1	96411	-	39903	49051
2010								
I	52.9	27	12	93.8	115756	-	64641	49948
<b>I 2010/I 2009</b>	<b>82.3</b>	<b>737</b>	<b>823</b>	<b>89.8</b>	<b>89.8</b>	<b>-</b>	<b>116.2</b>	<b>70.8</b>

<sup>1)</sup>Tranzit utovar prikazan kod izvoza <sup>2)</sup>Tranzit istovar prikazan kod uvoza / <sup>1)</sup>Transit loading presented in export. <sup>2)</sup>Transit loading presented in import.

P T T SAOBRAĆAJ / *POSTAL, TELEGRAPH AND TELEPHONE (PTT) COMMUNICATIONS*

	Poštanske usluge / <i>Postal services</i>		Telegrafske usluge / <i>Telegraph services</i>		Telefonske usluge / <i>Telephone services</i>	
	pisma u 000 komada <i>Lletters in thousands pcs.</i>	paketi u 000 komada <i>Packages in thousands pcs.</i>	uputnice u 000 komada <i>Postal orders in thousands pcs.</i>	telegr. u 000 komada <i>Telegraphs in thousands pcs.</i>	fiksna telefonija <i>Fixed telephony</i>	mobilna telefonija <i>Mobile telephony</i>
					minuti u 000 <i>Minutes in thous.</i>	minuti u 000 <i>Minutes in thous.</i>
2005	16185	56	65	572	876231	-
2006	17396	30	45	581	862596	488802
2007	18291	23	44	589	864471	660168
2008	20521	25	37	507	650567	1027704
2009	21564	25	34	476	513213	1166274
2009						
I	1722	2	2	43	42304	88991
II	1620	2	3	40	39124	96414
III	1661	2	3	47	42082	92185
IV	1599	2	3	40	37672	90754
V	1704	2	3	36	36488	95900
VI	1653	2	3	40	39645	96173
VII	1827	3	3	36	61040	102649
VIII	1874	2	3	39	69748	104594
IX	1864	2	3	35	38940	94612
X	1927	2	3	40	34872	99029
XI	1693	2	2	39	34517	97313
XII	2420	2	3	41	36781	107660
2010						
I	1587	2	2	33	32114	100359
<b>I 2010/I 2009</b>	<b>92.2</b>	<b>100.0</b>	<b>100.0</b>	<b>76.7</b>	<b>75.9</b>	<b>112.8</b>

DEPOZITI STANOVNIŠTVA / *DEPOSITS BY HOUSEHOLDS*

u mil. EUR, stanje na kraju perioda

balance at end-periods, EUR mill..

	Depoziti po viđenju <i>Demand deposits</i>	Oročeni depoziti / <i>Time deposits</i>					Ukupno <i>Total</i>
		do 3 mjeseca <i>Up to 3 months</i>	od 3 mjeseca do godinu dana <i>From 3 months to 1 years</i>	od 1 do 3 godine <i>From 1 to 3 years</i>	preko 3 godine <i>Over 3 years</i>	ukupno <i>Total</i>	
2004.	40,1	5,1	29,7	4,4	0,1	39,2	79,3
2005 <sup>1)</sup>	93,5	7,6	55,0	19,4	0,3	82,2	175,7
2006 <sup>1)</sup>	294,4	25,8	114,1	64,8	0,3	205,0	499,4
2007 <sup>1)</sup>	466,0	145,6	278,3	121,4	8,0	553,1	1019,4
I	299,9	31,1	188,5	4,6	0,4	224,6	524,5
II	333,4	31,2	190,5	14,8	0,4	236,9	570,3
III	367,7	32,1	210,3	9,9	0,5	252,8	620,5
IV	415,9	33,5	176,5	56,9	0,4	267,3	683,3
V	427,3	38,9	181,0	71,5	0,4	291,9	719,2
VI	438,6	49,9	181,3	96,2	0,5	328,1	766,7
VII	475,3	53,1	216,9	118,3	0,4	388,8	864,2
VIII	493,0	84,5	237,0	90,0	0,4	411,9	905,0
IX	479,5	55,0	299,0	89,1	0,5	443,7	923,2
X	474,8	130,9	236,9	109,6	4,6	482,2	957,0
XI	457,1	136,9	248,7	120,5	7,7	513,8	970,9
XII	466,0	145,6	278,4	121,4	8,0	553,4	1019,4
2008							
I	469,6	136,1	294,1	134,3	8,3	572,8	1.042,4
II	465,4	146,0	332,2	106,0	9,2	593,4	1.058,8
III	462,2	140,8	307,0	141,0	10,0	598,8	1.061,0
IV	464,2	150,3	309,9	154,0	10,9	625,1	1.089,3
V	438,7	168,5	313,6	151,6	10,4	644,1	1.083,0
VI	410,2	163,1	330,1	146,6	21,5	664,8	1.075,4
VII	416,9	154,9	330,2	175,3	33,6	694,0	1.110,9
VIII	418,7	168,7	352,2	159,1	24,4	704,4	1.123,1
IX	410,6	166,4	359,6	153,8	23,7	703,5	1.114,1
X	331,5	121,2	337,5	157,2	34,7	650,6	982,1
XI	298,9	87,7	259,5	228,3	23,4	599,0	898,1
XII	302,5	91,0	224,5	221,8	16,5	553,8	856,5
2009							
I	288,0	83,7	233,2	200,4	16,7	534,0	822,3
II	270,8	76,8	237,0	192,0	16,3	522,1	792,8
III	281,5	127,7	249,2	107,6	14,5	499,0	780,6
IV	256,6	135,1	264,7	92,0	14,0	505,8	762,4
V	248,7	140,9	254,2	89,2	14,0	498,3	747,0
VI	248,1	153,6	247,4	86,4	14,8	502,2	750,3
VII	258,0	159,6	245,4	87,3	13,6	506,0	764,0
VIII	257,6	158,8	248,9	88,9	13,0	509,5	767,1
IX	259,1	157,1	255,4	85,3	13,0	510,8	769,9
X	267,0	168,1	278,7	85,5	14,3	546,6	813,5

IZVOR: Centralna banka Crne Gore  
<sup>1)</sup> Stanje na 31.XIISOURCE: Central Bank of Montenegro  
<sup>1)</sup> Balance on 31 December

PLATNI BILANS CRNE GORE <sup>1)</sup> u hilj.EUR / *BALANCE OF PAYMENTS OF MONTENEGRO* <sup>1)</sup> EUR thous

Kvartali Quarters	A  Ukupno Total	TEKUĆI RAČUN / <i>Current account</i>							
		1 ( 1.1 - 1.2) Roba / <i>Goods</i>		2 ( 2.1 - 2.2) Usluge / <i>Services</i>		3 ( 3.1 - 3.2) Dohoci / <i>Income</i>		4 ( 4.1 - 4.2) Tekući transferi <i>Current transfers</i>	
		izvoz <i>Export</i>	uvoz <i>Import</i>	prihodi <i>Revenues</i>	rashodi <i>Expenditures</i>	prihodi <i>Revenues</i>	rashodi <i>Expenditures</i>	prihodi <i>Revenues</i>	rashodi <i>Expenditures</i>
		(1+2+3+4)	1.1	1.2	2.1	2.2	3.1	3.2	4.1
2007	-642,786	543,411	1,702,733	674,056	233,923	89,420	72,410	100,775	41,381
I	-149,269	127,530	301,431	49,268	45,215	20,148	12,905	23,281	9,946
II	-232,478	141,078	457,791	119,309	52,662	21,312	16,412	24,731	12,043
III	49,246	143,731	480,119	425,768	57,774	22,733	19,246	22,189	8,036
IV	-310,284	131,072	463,392	79,710	78,272	25,228	23,847	30,574	11,357
2008	-1,005,664	519,088	2,008,691	754,278	351,196	128,356	120,570	109,321	36,248
I	-312,392	108,253	438,101	64,926	69,646	27,988	17,409	21,911	10,314
II	-354,470	155,874	576,827	134,461	93,951	29,811	24,609	29,483	8,711
III	-51,419	146,290	572,384	465,793	102,428	36,359	45,093	28,819	8,775
IV	-287,383	108,671	421,380	89,098	85,171	34,198	33,459	29,108	8,448
2009 <sup>2)</sup>	-332,144	242,197	979,035	609,906	220,536	87,029	131,434	83,867	24,139
I	-192,860	83,664	286,954	55,170	64,370	29,739	25,925	26,402	10,587
II	-205,632	66,315	329,282	125,429	75,935	29,817	44,135	28,183	6,025
III	66,349	92,219	362,799	429,307	80,232	27,473	61,375	29,283	7,527

/nastavak /

/ continued /

Nastavak /		KAPITALNI I FINANSIJSKI RAČUN / CAPITAL AND FINANCIAL ACCAUNT					Neto greške i omaške <i>Net errors and omissions</i>
Kvartali Quarters	B  Ukupno  Total	račun kapitala  Capital account	2 (2.1+2.2+2.3+2.4) Finansijski račun / Financial account			promjena rezervi CBCG Change in CBM reserves	
			direktne investicije-neto Direct investments - net	porfolio investicije- neto Portfolio investments - net	ostale investicije- neto Other investments - net		
	(1+2)	1	2.1	2.2	2.3	2.5	(A+B)
2007	753,042	-1,435	524,876	4,700	375,702	-150,800	-110,257
I	753,042	-1,435	524,876	4,700	375,702	-150,800	-110,257
II	224,387	-642	132,412	9,731	116,513	-33,626	-75,117
III	233,960	-734	196,630	-8,307	126,651	-80,280	-1,482
IV	-164,174	39	47,163	14,800	-140,368	-85,808	114,929
2008	1,044,358	-463	567,609	-15,538	337,448	155,301	-38,694
I	376,442	-77	140,874	-7,638	238,576	4,707	-64,050
II	317,062	-24	179,220	-3,573	181,813	-40,374	37,408
III	-108,985	-209	131,524	1,617	-195,411	-46,505	160,403
IV	459,838	-153	115,991	-5,943	112,469	237,474	-172,455
2009 <sup>2)</sup>	14,810	1,953	764,689	-33,058	-613,885	-104,888	317,334
I	183,238	-3	88,781	-10,471	43,163	61,768	9,622
II	113,085	1,995	234,573	-18,656	-117,724	12,896	92,548
III	-281,513	-39	441,334	-3,931	-539,324	-179,552	215,164

<sup>1)</sup> IZVOR: Centralna banka Crne Gore<sup>1)</sup> SOURCE: Central Bank of Montenegro<sup>2)</sup> Prethodni podaci<sup>2)</sup> Preliminary data

**METODOLOŠKA OBJAŠNJENJA****STANOVNIŠTVO**

**Izvori podataka** – Podaci o rođenim, umrlim i zaključenim brakovima prikupljaju se od matičara, a podaci o razvedenim brakovima od sudova nadležnih za razvod braka.

Podaci o unutrašnjim migracijama prikupljaju se od Ministarstva unutrašnjih poslova i javne uprave. Jedinica posmatranja su pojedinačni događaji preseljenja (doseljenja i odseljenja) unutar granica Crne Gore.

**Obuhvatnost i definicije** – Podaci o prirodnom kretanju stanovništva obuhvataju broj rođenih, umrlih i vjenčanih, koji je registrovan u matičnoj službi, dok se broj razvedenih brakova prikupljaju od strane nadležnih sudova.

Jedinica posmatranja su pojedinačni događaji preseljenja (doseljenja i odseljenja) unutar granica Crne Gore.

**Metodološki materijal** – Detaljna objašnjenja o metodologiji primjenjenoj u vitalnoj statistici nalaze se u Uputstvu za matičare o popunjavanju statističkih listića (o rođenju, slučaju smrti i vjenčanju) i u Uputstvu za sudije o popunjavanju statističkih listića o razvedenom braku.

**ZAPOSLENOST I ZARADE****Zaposlenost**

Podaci o godišnjem prosjeku zaposlenih izračunati su na osnovu dva stanja (31.marta i 30.septembar), a dobijeni su redovnim polugodišnjim izvještajem o zaposlenim i zaradama zaposlenih (RAD – 1P) kao i na osnovu podataka koji su regulisani Zakonom o evidencijama u oblasti rada i zapošljavanja ("Sl.list RCG", br.69/03 ), a vode ih Fondovi Penzijsko invalidskog osiguranja i Zdravstva, koje Zavod za statistiku redovno preuzima od istih.

Podaci o mjesečnom broju zaposlenih dobijeni su na osnovu redovnog mjesečnog istraživanja o zaposlenima i zaradama zaposlenih (Rad – 1, koje se vrši na bazi uzorka i prijava – odjava osiguranika koje vode Republički Fond Penzijsko invalidskog osiguranja i Fond Zdravstva.

**Obuhvatnost**

Polugodišnjim izvještajem o zaposlenima i zaradama zaposlenih (RAD – 1P) obuhvaćena su preduzeća, ustanove i organizacije svih oblika svojine. Ovim istraživanjem su obuhvaćeni strani državljani zaposleni u našoj zemlji. Ne smatraju se zaposlenima lica koja rade po ugovoru o djelu ili po ugovoru o obavljanju privremenih i povremenih poslova.

Podaci o nezaposlenim licima obuhvataju sva lica koja su kod Zavoda za zapošljavanje registrovana kao nezaposlena.

**Definicije**

Pod pojmom zaposleni podrazumijevaju se sva lica koja imaju zasnovan radni odnos sa preduzećem, ustanovom ili organizacijom ili individualnim

**METHODOLOGICAL EXPLANATIONS****POPULATION**

**Data sources** – Data on births, deaths and marriages are collected from Registry Offices and data on divorces from the courts of respective jurisdiction.

Data on internal migrations are collected from the Ministry of Internal Affairs and Public Administration.

**Coverage and definitions** – Data on population changes include the number of births, deaths and marriages, registered by Registry Offices, while the number of divorces is collected by the courts of respective jurisdiction.

Observation units are individual occurrences of migrations (moving in and out) within the borders of Montenegro.

**Methodological material** – Detailed explanation on methodology applied in vital statistics can be found in the Instructions for the filling and submitting of statistical questionnaires (on births, deaths and marriages) as well as in the Instructions for judges for the filing of statistical questionnaires on divorces.

**EMPLOYMENT AND EARNINGS****Employment**

The data on annual average of employees are calculated on the basis of two reports (31 March and 30 September) and they are obtained from the regular semiannual report on employees and their earnings (RAD-1P), as well as on the basis of data regulated by the Law on Records in Labor and Employment ("Official Gazette of Republic of Montenegro", No. 69/03), and managed by the Fund for Pension and Disability Insurance and Health Fund.

The data on monthly number of employees are obtained by regular monthly survey of employees and their earnings (RAD-1), conducted on the basis of sample, and registration / withdrawal of beneficiaries in Republic Health Fund and Fund for Pension and Disability Insurance.

**Coverage**

The Semiannual Report on employees and their earnings (RAD-1) includes enterprises, institutions and organizations of all types of ownership. This survey includes foreign citizens employed in our country. The persons that work pursuant to a job contract or a contract on casual engagement are not considered as employed. Data about unemployed persons include all persons which are registered as unemployed in the Employment Agency.

**Definitions**

The term "employees" refers to all persons being employed in enterprises, institutions, organizations or by self-employed individuals no matter whether their employment status is based on a permanent or temporary

poslodavcem bez obzira da li su radni odnos zasnovali na neodređeno ili određeno vrijeme i da li rade puno ili kraće od punog radnog vremena. Od 1.januara 2009.godine u ukupan broj zaposlenih u Crnoj Gori ulaze i zaposleni stranci na osnovu čl.1 Zakona o zapošljavanju i radu stranaca ("Sl.list CG", br. 22 od 02.04.2008.godine), a stupio na snagu 01.januara 2009.godine „stranac se može zaposliti, odnosno, raditi u Crnoj Gori pod uslovima utvrdjenim zakonom, kolektivnim ugovorom, potvrđenim i objavljenim međunarodnim ugovorom i opšte prihvaćenim pravilima međunarodnog prava"

## Nezaposleni

### Definicije

Podaci o broju nezaposlenih lica preuzeti su od Zavoda za zapošljavanje i obuhvataju samo lica koja su registrovana kod ove službe.

U grupi „lica koja traže zaposlenje“ obuhvaćena su lica shodno članu 4 Zakona o zapošljavanju, stav prvi: „nezaposlenim licem, u smislu ovoga Zakona, smatra se lice od 15-65.godina života koje se nalazi na evidenciji Zavoda za zapošljavanje Crne Gore (u daljem tekstu: Zavod) i aktivno traži započenje, kao i strani državljanin ili lice bez državljanstva, koji ima odobrenje za stalno nastanjenje i odobrenje za zasnivanje radnog odnosa u Crnoj Gori”.

U grupi „lica koja primaju novčanu naknadu“ obuhvaćena su lica koja shodno članu 48 Zakona o zapošljavanju Crne Gore, stav prvi: „pravo na novčanu naknadu ostvaruje osiguranik kojem je u smislu Zakona o radu prestao radni odnos bez njegovog zahtjeva, saglasnosti ili krivice, a koji je bio u radnom odnosu kod jednog ili više poslodavaca sa punim radnim vremenom najmanje 9 mjeseci neprekidno ili 12 mjeseci sa prekidima u posljednjih 18 mjeseci (u daljem tekstu: staž osiguranja), ako se prijavi Zavodu u roku od 30 dana od dana prestanka radnog odnosa“.

U grupi „nezaposlene osobe” koje su se tokom izvještajnog mjeseca prijavile na evidenciju Zavoda za zapošljavanje Crne Gore obuhvataju grupe novoprijavljenih lica”:

- Prvi put, nema zapošljavanja – odnosi se na lica koja su se prvi put prijavila na evidenciju Zavoda, a do tada nijesu bila zapošljavana;
- Prvi put, ima zapošljavanja – lica koja su se prvi put prijavila na evidenciju Zavoda, a do tada nijesu bila zapošljavana;
- Nije prvi put, nema zapošljavanja- lica koja su se više puta prijavljivala na evidenciju Zavoda, a nisu bila zapošljavana;
- Nije prvi put, ima zapošljavanja – lica koja su se više puta prijavljivala na evidenciju Zavoda, a bila su zapošljavana;

U grupi „prestanak vođenja evidencije“ obuhvaćena su

*contract and whether they work on a full-time or part-time basis. From the 1<sup>st</sup> January 2009 in the total number of employees enter also employed foreigners according to the article 1 of the Law on Employment and work of the foreigners (Official Gazette of Montenegro, number 22 from 2<sup>nd</sup> April, 2008), which took effect on the 1<sup>st</sup> January 2009 "strangers can be employed, i.e., work in Montenegro under condition established in Law, collective contract, confirmed and published international contract and generally accepted regulation of international Law"*

## Unemployed

### Definitions

*Data about unemployed persons are taken from the Employment Agency and include only persons registered at the Agency.*

*The group "persons looking for employment" includes persons defined according to the article 4, par. 1 of the Law on Employment as: "an unemployed person, according to this Law, is a person aged 15-65 which is in the records of the Employment Agency of Montenegro (furthermore: EAM) and is actively looking for employment, as well as a foreigner or a person without citizenship, who has the permission for permanent residence as well as the permission for starting work in Montenegro".*

*The group "persons receiving social benefits" includes persons who, according to the article 4, par. 1 of the Law on Employment: 'receive the monetary benefit for stopped working without person's request, compliance or guilt, and who was working for one ore more employers the full working time for at least 9 months without a break or 12 months with breaks in the last 18 months (furthermore: duration of insurance), if he/she reports to the EAM within 30 days of stopping to work.*

*The group "unemployed persons" who reported themselves to the records of the Employment Agency of Montenegro within the reporting month includes the groups of newly reported persons:*

- *First time, no employment– refers to persons who are reported for the first time in the records of EAM, and were not previously employed;*
- *First time, with employment – persons who are reported for the first time in the records of the EAM, and used to be employed;*
- *Not-first time, no employment – persons who reported to the records of EAM several times, and were not employed;*
- *Not-first time, no employment persons who reported to the records of EAM several times, and used to be employed;*

*The group "stopped keeping records" includes persons*



lica koja shodno članu 86 Zakona o zapošljavanju, stav prvi: „evidencija o nezaposlenom licu prestaje da se vodi ako:

1. zaključi ugovor o radu sa punim radnim vremenom;
2. se odjavi iz evidencije nezaposlenih lica;
3. odbije uključivanje ili ne izvršava obaveze utvrđene ugovorom o uključivanju u program aktivne politike zapošljavanja;
4. postane vlasnik ili većinski suvlasnik preduzeća;
5. postane preduzetnik;
6. odbije odgovarajuće zaposlenje;
7. nije dalo tačne podatke o ispunjavanju uslova za sticanje statusa nezaposlenog lica;
8. navrš 65 godina života;
9. ostvari pravo na starosnu ili invalidsku penziju;
10. ostane potpuno nāposoban za rad;
11. ode na izdržavanje kazne zatvora u trajanju dužem od šest mjeseci;
12. aktivno ne traži zaposlenje;
13. je radno angažovano suprotno propisima o radnim odnosima („rad na crno“);
14. postane osiguranik – zemljoradnik, u skladu sa Zakonom o penzijskom i invalidskom osiguranju“.

## ZARADE

### Izvori podataka

Podaci o prosječnim zaradama prikazuju zarade isplaćene u mjesecu i dobijeni su iz redovnog mjesečnog istraživanja Mjesečni izvještaj o zaposlenim i zaradama (obrazac RAD-1).

### Obuhvatnost

Istraživanjem su obuhvaćena preduzeća, ustanove, zadruge ili organizacije, svih oblika svojine kao i njihove jedinice u sastavu, po organizaciono teritorijalnom principu, počev od nivoa opštine.

### Definicije

„Zarada zaposlenog je bruto zarada koja obuhvata zaradu za obavljeni rad i vrijeme provedeno na radu, uvećanu zaradu, naknadu zarade i druga lična primanja, koja podležu plaćanju poreza na dohodak fizičkih lica, utvrđena zakonom, kolektivnim ugovorom i ugovorom o radu.“ Član 78 Zakona o radu („Sl.list CG“, br. 49/08) i član 1 Zakona o izmjenama i dopunama Zakona o doprinosima za obavezno socijalno osiguranje („Sl.list CG“, br. 79 od 23.decembra 2008.godine).

Zarada se uvećava u skladu sa kolektivnim ugovorom i ugovorom o radu za: rad duži od punog radnog vremena; noćni rad; rad u dane državnih i vjerskih praznika koji su zakonom utvrđeni kao neradni dani; minuli rad i u drugim slučajevima utvrđenim kolektivnim ugovorom i ugovorom o radu.

who, according to the article 86, refer to the par. 1 of the Law on Employment: “records on the unemployed person is stopped to be kept if:

- 1 the person signs contract on work with full working time;
- 2 is signed off from the records of the unemployed persons;
- 3 refuses inclusion or does not perform obligations specified in the agreement on the inclusion in the programme of active employment policy;
- 4 becomes the owner or major co-owner of an enterprise;
- 5 becomes an entrepreneur;
- 6 refuses appropriate employment;
- 7 did not give correct data on meeting conditions for getting the unemployment status
- 8 is 65 years old;
- 9 gets right to the old-age and survivor pensions;
- 10 is completely incapable to work;
- 11 is serving the imprisonment punishment longer than 6 months;
- 12 is not actively looking for employment;
- 13 is working contrary to the regulations on labour (“unregistered work”);
- 14 becomes insured by agriculture, in compliance with the Law on pension and disability insurance.

## WAGES

### Data sources

The data on average wages present wages paid out in a month, and are obtained from regular monthly survey Monthly report on employees and their earnings (questionnaire RAD-1).

### Coverage

The survey covers enterprises, institutions, cooperatives or organizations as well as their composite units of all kinds of ownership, by organizational and territorial principle, starting from the level of municipality.

### Definitions

Wage of the employee is the gross earning that is consisted of earning made for work performed and time spent at work, increased earning, remuneration of earnings and other personal incomes, which are subject to income tax of natural persons, and it is determined by collective agreement and the agreement on the work. “Article 78 of the Law on work (“Official Gazette of Montenegro”, number 49/08) and article 1 of the Law on Amendments to the Act on contributions for compulsory social insurance (“Official Gazette of Montenegro”, number 79 of 23<sup>rd</sup> December, 2008)

Earnings increases in accordance with the collective agreement and the agreement on the work for: work longer than full working hours, night work, work in the days of national and religious holidays that are fixed by

**Prosječna zarada izračunava se tako što se ukupno isplaćena masa zarada u mjesecu dijeli sa brojem zaposlenih na koje se odnose izvršene isplate.**

Zaradu bez poreza i doprinosa čini zarada umanjena za poreze i doprinose na teret zaposlenog.

Indeks realne prosječne zarade bez poreza i doprinosa predstavlja odnos između indeksa nominalne prosječne zarade bez poreza i doprinosa i indeksa potrošačkih cijena.

## CIJENE

### CIJENE PROIZVODJAČA INDUSTRIJSKIH PROIZVODA

Pod prodajnom cijenom proizvođača industrijskih proizvoda podrazumijeva se cijena po kojoj proizvođači prodaju svoje proizvode u najvećim količinama nadomaćem tržištu. U cijenu ulazi regres koji ostvaruje prodavac a odbija se rabat, popust, kasa skonto i sl, ako ih prodavac odobrava kupcima. U cijenu ne ulazi porez na dodatu vrijednost.

Ove cijene prikupljaju se mjesečnim izvještajima koje neposredno dostavljaju izabrana preduzeća za oko 250 industrijskih proizvoda. Izbor industrijskih preduzeća izvršen je prema njihovom učešću u ukupnoj realizaciji određene oblasti.

Prosječne mjesečne cijene računaju se ponderisanjem tekućih mjesečnih cijena odgovarajućih proizvoda, a godišnje prosječne cijene proizvođača industrijskih proizvoda predstavljaju neponderisani prosjek mjesečnih cijena.

Indeksi cijena izračunavaju se ponderima na bazi podataka o realizaciji industrijske proizvodnje. Svake godine vrši se korekcija pondera, a novi ponderi izračunavaju se svake pete godine.

Indeksi cijena proizvođača industrijskih proizvoda preračunavaju se početkom svake godine na prethodnu godinu kao baznu.

### POTROŠAČKE CIJENE

Potrošačke cijene su cijene po kojima trgovina na malo, individualni proizvođači i vršioći usluga prodaju svoje proizvode i usluge krajnjim potrošačima, uključujući sve poreze i takse koje se plaćaju u prometu na malo.

Potrošačke cijene prate se u četiri grada Crne Gore: Podgorici, Nikšiću, Kotoru i Pljevljima, koji predstavljaju

*law as non-working days, past performance in other cases established by collective agreement and the agreement on work.*

*Calculation of the average earnings is done so that the total sum of all monthly earnings is divided by the number of employees to whom the paid earnings refer.*

*Net salaries and wages are tax and contributions deducted (gross) salaries and wages.*

*Index real average wage without taxes and contributions is the relationship between indices of nominal average wage without taxes and contributions, and the index of consumer prices.*

## PRICES

### PRODUCER PRICES OF INDUSTRIAL PRODUCTS

*Producer prices of industrial products is the price according to which the producers sell their products in the most numerous quantities on the domestic market. The price also includes the regress achieved by the producer, and deduces the rebate, discounts, cash sconto, etc., if the producer approves them to the buyer.*

*The price does not include value added tax..*

*These prices are collected through the monthly surveys submitted directly by the chosen enterprises for about 250 industrial products. The list of industrial enterprises is done on the basis of their participation in the total realization of certain area.*

*Average monthly prices are calculated by weighting the current monthly prices of corresponding products, and annual average producer prices of industrial products present the un-weighted average of the monthly prices.*

*Price indexes are calculated with weights based on the data on the total realization of industrial production. The correction of weights is done every year, and the new weights are calculated every five years.*

*Indices of producer prices of industrial products are recalculated in the beginning of each year using the previous year as the base year.*

### CONSUMER PRICES

*Consumer prices are the prices at which the retail shop, custom manufacturers and service providers sale their products and services to consumers, including all taxes and fees that are paid in the small.*

*Consumer prices are monitored in the four cities of Montenegro: Podgorica, Niksic, Pljevlja and Kotor, which represent major market centers. Prices non-*

veće tržišne centre. Cijene industrijsko-neprehrambenih proizvoda snimaju se jedanput mjesečno u periodu od 3. – 10.-og, industrijsko - prehrambenih proizvoda od 11. - 14.-og, usluga od 14-16.-og, a cijene poljoprivrednih proizvoda od 15 - 21.-og u mjesecu.

Prosječne mjesečne cijene za grad kod svih proizvoda i usluga, računaju se neponderisanom geometrijskom sredinom, dok se prosječne mjesečne cijene za Crnu Goru računaju na bazi prosječnih cijena iz četiri grada koje se ponderišu strukturom potrošnje domaćinstava.

Prosječne godišnje potrošačke cijene predstavljaju neponderisani prosjek cijena za dvanaest mjeseci.

Početkom svake godine vrši se korektura pondera na bazi rasta potrošačkih cijena. Indeksi potrošačkih cijena preračunavaju se početkom svake godine na prethodnu godinu kao baznu.

## ŠUMARSTVO

### Izvori podataka i obuhvatnost

Podaci se prikupljaju mjesečnim izvještajem ŠUM-22. Ovim izvještajem obuhvaćena su šumarska i druga preduzeća koja u državnim šumama vrše proizvodnju šumskih sortimenata, bez obzira da li im je proizvodnja šumskih sortimenata osnovna djelatnost ili nije.

### Definicije

Indeks fizičkog obima iskorišćavanja šuma obračunava se na osnovu podataka o proizvodnji šumskih sortimenata, prema nomenklaturi proizvoda i ponderacionih koeficijenata. Količine predstavljaju neto drvenu masu sortimenata izraženu u kubnim metrima. Za izračunavanje indeksa proizvodnje šumskih sortimenata kao koeficijenti ponderacije koriste se prosječne prodajne cijene proizvoda.

## INDUSTRIJA

### Izvori podataka

Prikazani podaci prikupljaju se mjesečnim izvještajima industrije na obrascu IND-1.

### Obuhvatnost

Mjesečnim izvještajem industrije obuhvataju se sva preduzeća kao i njihovi djelovi koji obavljaju industrijsku djelatnost, odnosno koji su prema Klasifikaciji djelatnosti razvrstani u sektore: Vadjenje rude i kamena, Prerađivačka industrija i Proizvodnja i snabdijevanje električnom energijom, gasom i vodom. Preduzeća neindustrijskih djelatnosti su izvještajne jedinice ako u svom sastavu imaju jedinicu koja se bavi industrijskom djelatnošću.

*industrial products are recorded once a month for a period of 3 - 10 th, industrial - food products from 11 - 14 th, provider of 14-16.-og, and the prices of agricultural products 15-21-th of the month.*

*Average monthly prices for the city for all products and services are calculated by non-weight geometric mean, while the average monthly prices for Montenegro calculated based on average price in the four cities that weighted by structure of household consumption.*

*Average annual consumer prices represent the average non-weight average prices for twelve months.*

*Beginning of each year is done proofreading weights on the basis of consumer price growth. Consumer price converted at the beginning of each year to the previous year as a base.*

## FORESTRY

### Data sources and coverage

*The data are collected on the basis of the monthly survey ŠUM-22. This report covers forestry and other enterprises dealing with production of forest assortments in state forests, disregarding if forest assortments production is their basic activity or not.*

### Definitions

*The physical volume index of forests exploitation is calculated on the basis of data on the production of forest assortments, according to the present nomenclature of products and weights coefficients. Quantities represent net wood mass of assortments expressed in cubic meters. In order to calculate the index of forest assortments production, average purchase prices are used as weighting coefficients.*

## INDUSTRY

### Sources of data

*The shown data are collected by monthly surveys (through the questionnaire IND-1).*

### Coverage

*Monthly industry survey includes all enterprises, as well as their parts, performing the industrial activity, i.e. those that are according to the Classification of Activities classified into the following sectors: Mining and quarrying, Manufacturing, Electricity, gas, and water supply. Enterprises of non-industrial activities represent reporting units if they have in their structure a unit dealing with industrial production.*

## Nomenklatura

Proizvodnja se iskazuje prema Nomenklaturi industrijskih proizvoda, koju čine industrijski proizvodi i usluge razvrstane po djelatnostima u kojima su proizvedeni.

## Indeksi

Indeks fizičkog obima industrijske proizvodnje formiran je na osnovu podataka o količinama proizvoda i ponderacionog sistema. Podaci o količinama daju se prema Nomenklaturi proizvoda i sirovina.

Za obračun indeksa fizičkog obima industrijske proizvodnje ponderi izražavaju prosječnu dodatnu vrijednost po jedinici proizvoda.

## GRAĐEVINARSTVO

### Izvor podataka i obuhvat

Prikazani podaci prikupljaju se tromjesečnim izvještajem građevinarstva GRAĐ-31, kojim su obuhvaćena preduzeća iz oblasti građevinarstva, kao i jedinice koje obavljaju građevinsku djelatnost a nalaze se u sastavu negrađevinskih preduzeća. Podaci se prikupljaju od preduzeća iz Crne Gore kao i poslovnih jedinica stranih preduzeća koja obavljaju građevinsku djelatnost u Crnoj Gori.

### Definicije

Vrijednost izvršenih građevinskih radova izražena je u tekućim cijenama i obuhvata sav ugrađeni građevinski materijal i utrošeni rad. Podaci o vrijednosti izvršenih građevinskih radova daju se na osnovu privremenih situacija koje ispostavljaju izvođači radova. U vrijednost nijesu uključeni troškovi nabavke zemljišta, projektovanja, nadzora i PDV-a. Podaci o vrijednosti izvedenih radova odnose se na radove izvedene u izvještajnom periodu na završenim i nezavršenim građevinama.

Broj radnika – Obuhvata sve radnike koji na gradilištima obavljaju građevinske, instalaterske i završne radove, bez obzira na kvalifikaciju, vrstu radnog odnosa (ugovor o radu, ugovor o djelu, iznajmljeni radnici itd.) i dužinu rada na gradilištima. Nijesu uključeni zaposleni koji rade na inženjersko-tehničkim, administrativnim i rukovodećim poslovima.

Izvršeni efektivni časovi rada - Obuhvataju stvarno odrađene časove radnika angažovanih na gradilištima u redovnom radnom vremenu kao i u prekovremenim satima.

Nove narudžbe – Predstavljaju ukupnu vrijednost ugovorenih radova između proizvođača i treće strane na osnovu zaključenog ugovora.

## Nomenclature

*The production is presented according to the Nomenclature of industrial products, including industrial products and services structured according to the activities in which they were produced.*

## Indices

*Index of physical scope of industrial production is formed on the basis of data on product quantities and weighting system.*

*The data are provided according to the Nomenclature of products and raw materials. In the calculation of the index of physical scope of industrial production, the weights express the average value added per product unit.*

## CONSTRUCTION

### Source of data and coverage

*Presented data are collected through a quarterly survey in construction GRAĐ-31, which include enterprises in construction, as well as units performing the activity in construction and are within non-construction enterprises. Data are collected from enterprises from Montenegro as well as the business units of foreign enterprises performing construction activity in Montenegro.*

### Definitions

*Value of finalized construction works is given at current prices and includes all built material and performed work. Data about the value of finalized construction works is given on the basis of temporary situations given by contractors. The value does not include costs of buying the land, engineering, monitoring and VAT. The data on value of finalized work refer to works performed in the reporting period on finished and non-finished construction sites.*

*Number of workers – Includes all workers who at the construction site perform the construction, installation and final works, no matter to qualification, the type of working contract (contract on work, contract on task, rented workers, etc.) and the duration of work at the construction site. It does not include employees working on engineering-technical, administrative and managerial positions.*

*Effective working hours – include really performed working hours of workers engaged in the regular working hours, as well as overtime work.*

*New orders – present the total value of contracted works between producer and third party based on the concluded report.*

## SPOLJNA TRGOVINA

### Izvori i metodi prikupljanja podataka

Izvor podataka za statistiku spoljne trgovine je Jedinstvena Carinska Isprava o izvozu i uvozu robe, koju prilikom carinjenja robe, u ime preduzeća, podnose carinarnicama špediterska preduzeća koja imaju dispoziciju carinskog obveznika.

### Obuhvatnost

Pri izvozu obuhvata se sva roba koja potiče iz domaće odnosno proizvodnje iz unutrašnjeg robnog prometa uključujući i tzv. nacionalizovanu robu (roba koja je bila uvezena i ocarinjena, pa se u nepromijenjenom ili doradenom stanju izvozi kao roba porijekla iz Crne Gore na strano tržište). Uvoz obuhvata svu robu uvezenu iz inostranstva koja je ocarinjena i puštena u unutrašnji promet u cilju reprodukcije, investicija ili široke potrošnje.

Uključene su i isporuke raznih dobrotvornih organizacija i privatne poklon pošiljke.

Od januara 2008. god. MONSTAT je u skladu, sa preporukama UN-a i EUROSTAT-a primijenio opšti i specijalni trgovinski sistem.

MONSTAT je do sada koristio ublaženu definiciju specijalnog sistema trgovine. Svjesni ograničenja ublažene definicije specijalnog sistema trgovine, u rezultate spolnotrgovinske razmjene uključen je i ponovni izvoz robe iz carinskih skladišta i slobodnih carinskih zona koji se registruje po opštem sistemu trgovine.

**Opšti sistem trgovine** koristi se u slučajevima kada se statistička teritorija zemlje poklapa s njenom ekonomskom teritorijom. Prema tome, opšti sistem trgovine predstavlja širi koncept i kod uvoza obuhvata svu robu koja ulazi na ekonomsku teritoriju zemlje koja prikuplja podatke, sa izuzetkom robe koja je u tranzitu, a kad izvoza obuhvata svu robu koja napušta ekonomsku teritoriju zemlje koja prikuplja podatke, sa izuzetkom robe koja je u tranzitu.

**Sistem specijalne trgovine** predstavlja užu koncept i koristi se u slučajevima kada se statistička teritorija zemlje poklapa samo sa određenim dijelom njene ekonomske teritorije. Stroga definicija specijalnog sistema trgovine koristi se kada statistička teritorija obuhvata samo slobodno cirkulirajuće područje u okviru koga roba može biti raspoloživa bez carinskih ograničenja, to znači da je ona prošla carinski postupak i da se koristi za domaću upotrebu u cilju reprodukcije, široke potrošnje i investicije.

Izvoz obuhvata svu robu koja napušta slobodno cirkulirajuće područje zemlje koja prikuplja podatke.

## EXTERNAL TRADE

### Sources and methods of data collection

*Data source for external trade statistics is Single Administrative Document on import and export of goods, submitted, on behalf of enterprises, by shipping agents having the disposition of Custom tributary.*

### Coverage

*Export covers all goods of domestic i.e. internal production origin, including so-called nationalized merchandise, (imported goods cleared through the customs, and unchanged exported as goods of Montenegro origin). Import covers all merchandise imported, cleared through the customs, and put on domestic market for reproduction, investment or consumption purposes.*

*Deliveries of various charity organizations and private gifts are also included.*

*Due to the recommendations of UN and EUROSTAT, MONSTAT has since January 2008 applied the general and special trade systems.*

*So far MONSTAT was using the reduced definition of the special trade system. Being aware of the limitations of the reduced definition of special trade system, the results of external trade include the re-export of goods from customs warehouses and free customs zones which is registered according to general trade system.*

**General trade system** is used in cases when the statistical territory matches with its economic territory. Accordingly, the general trade system presents the wider concept and in import it includes all goods coming in the economic territory of the country which collects data, with the exception of goods in transit, and in export it includes all goods leaving the economic territory of the country which collects data, with the exception of goods in transit.

**Special trade system** presents the narrow concept and is used in cases when the statistical territory of the country matches only with the certain part of its economic territory. The strict definition of the special trade system is used when the statistical territory includes only the free circulating area in which the goods can be available without the customs limitations, which means that it went through the customs procedure and that it is used for domestic use for the purpose of reproduction, wider consumption and investments.

*The export includes all goods which leaves the free circulating area of the country which collects the data.*

## Definicije

*Vrijednost robe* u spoljnoj trgovini iskazana je na osnovu cijena koje su postigla preduzeća prilikom sklapanja ugovora. Sve vrijednosti obračunate su na bazi pariteta franko granice Crne Gore: FOB-cijene za izvoz, CIF-cijene za uvoz.

Statistička vrijednost robe koja se izvozi jeste fakturna vrijednost robe. Statistička vrijednost robe koja se uvozi jeste vrijednost koja predstavlja carinsku osnovicu. Podaci o vrijednosti su obračunati po tekućim kursovima koji se primjenjuju za utvrđivanje carinske osnovice. Po tekućim kursovima koji se primjenjuju za utvrđivanje carinske osnovice takođe je izvršen obračun troškova transporta, osiguranja, pretovara i sl. koji se plaćaju u stranoj valuti.

Registracija podataka spoljne trgovine po zemljama vrši se po principu zemlje namjene kod izvoza i zemlje porijekla kod uvoza. To znači da se pri izvozu registruje zemlja u kojoj se roba troši i dalje prerađuje, a pri uvozu ona zemlja u kojoj je roba proizvodnjom dovedena u stanje u kome se uvozi

## UNUTRAŠNJA TRGOVINA

### Izvori podataka

Podaci o unutrašnjoj trgovini preduzeća koja se bave trgovinom na malo, prikupljaju se redovnim mjesečnim istraživanjem. Istraživanje je na bazi uzorka i obuhvaćena su preduzeća koja su u Registru jedinica razvrstavanja prema klasifikaciji djelatnosti razvrstana u sektor trgovine.

Podaci o prodaji i otkupu proizvoda poljoprivrede, šumarstva i ribarstva prikupljaju se mjesečnim izvještajima o realizaciji poljoprivrednih proizvoda sopstvene proizvodnje poljoprivrednih preduzeća i zemljoradničkih zadruga i mjesečnim izvještajem o otkupu poljoprivrednih proizvoda od individualnih gazdinstava.

### Obuhvatnost

Statistika unutrašnje trgovine obuhvata i prikazuje promet preduzeća čija je osnovna djelatnost trgovina na malo.

Mjesečnim izvještajima o prodaji i otkupu proizvoda poljoprivrede, šumarstva i ribarstva obuhvaćena su poljoprivredna preduzeća, zemljoradničke zadruge kao i druga preduzeća koja su ovlaštena da vrše otkup proizvoda od individualnih gazdinstava u cilju dalje prerade ili prodaje.

### Definicije

Promet robe u trgovini na malo predstavlja vrijednost prodane robe preduzeća na malo koja je prodana krajnjim potrošačima, odnosno stanovništvu za ličnu potrošnju i upotrebu u domaćinstvu, kao i pravnim i fizičkim licima za obavljanje djelatnosti.

## Definitions

*Value of goods in external trade statistics* is shown on the basis of prices fixed by organizations and enterprises by contractual stipulation. All values have been calculated on the basis of parity free on Montenegrin border, i.e. F.O.B. export prices and C.I.F. import prices.

Statistical value of goods being exported is the invoice value of goods. Statistical value of goods being imported is the value representing customs base. Data on values are calculated on the basis of exchange rates applied for establishing customs base. Costs of transport, insurance and reloading, etc. paid in foreign currency are calculated at current exchange rates applied for establishing customs base.

Registration of external trade data by country is carried out according to principle of destination country for the export and origin country for the import. It means that, in case of export, the country in which goods are consumed or further processed is registered, and in case

of import – the country where the goods have been produced in the condition in which they have been imported.

## INTERNAL TRADE

### Sources of data

Data of internal trade of enterprises dealing with retail trade are collected through regular monthly survey. The survey is sample based and includes all enterprises which are in the Administrative register classified in the sector Trade.

Data about sales and buy out of products in agriculture, forestry and fishery are collected through monthly reports on realization of agricultural products of own production of agricultural enterprises and cooperatives and through monthly report on buying out of agricultural products from individual holdings.

### Coverage

Statistics of internal trade covers and presents the turnover of enterprises whose primary activity is retail trade.

Monthly survey on sales and buying out of products in agriculture, forestry and fishing covers agricultural enterprises, agricultural cooperatives, as well as other enterprises authorized to do the buying out of products from individual holdings for future processing or sale.

### Definitions

Turnover of goods in retail trade is the retail value of goods of an enterprise sold to final users, i.e., the population for personal consumption and use in household, as well as to private and physical persons for performing the activity.

Podaci o prodaji i otkupu proizvoda poljoprivrede, šumarstva i ribarstva obuhvataju vrijednost prodaje proizvoda iz sopstvene proizvodnje preduzeća i zadruga kao i otkup vrijednosti proizvoda od individualnih gazdinstava, koje vrše zato ovlašćene organizacije u cilju dalje prerade ili prodaje.

## UGOSTITELJSTVO

### Izvori podataka i obuhvatnost

Podaci o ostvarenom prometu u ugostiteljstvu po mjesecima, se procjenjuje na osnovu ocjene trenda prometa, dok se ne dobiju rezultati redovnog tromjesečnog istraživanja, ugostiteljstva. Mjesečne procjene se korriguju na osnovu dobijenih rezultata.

Podaci o prometu u ugostiteljstvu prikupljaju se tromjesečnom izvještajnom službom za ugostiteljska preduzeća, po grupama usluga. Godišnjom izvještajnom službom prate se ugostiteljska preduzeća i preduzetnici. Mjesečni podaci ne obuhvataju promet preduzetnika.

### Definicije

Prikazani promet u ugostiteljstvu predstavlja vrijednost izvršenih ugostiteljskih usluga koje obuhvataju usluge smještaja, ishrane, točenja pića, kao i druge usluge koje se uobičajeno obavljaju u ugostiteljstvu.

## TURIZAM

### Izvori podataka i obuhvatnost

Podaci o broju dolazaka turista i noćenja prikupljeni su redovnim mjesečnim izvještajem (obrazac TU-11). Izvještaji se sastavljaju na osnovi evidencija u knjigama gostiju. Istraživanje se sprovodi na bazi potpunog obuhvata.

### Definicije

**Izvještajne jedinice** jesu svi poslovni subjekti (preduzeća/trgovačka društva, zadruge, ustanove, itd.) i njihovi dijelovi koji obavljaju djelatnost pružanja usluga smještaja turistima; zdravstvene ustanove za svoje objekte u kojima osobe borave radi medicinske rehabilitacije (osobe same snose naknadu za taj boravak); poslovni subjekti i njihovi dijelovi koji se bave posredovanjem u pružanju smještajnih usluga (putničke agencije); poslovni subjekti koji se bave posredovanjem u smještaju gostiju u seoskim kućanstvima; turističke zajednice i druga nadležna tijela za privatne sobe, apartmane ili kuće koje neposredno iznajmljuju turistima; poslovni subjekti i njihovi dijelovi za svoja odmarališta; poslovni subjekti koji su osnovali ili vode brigu i nadzor nad planinarskim domovima; vojne ustanove za svoje ugostiteljske objekte za smještaj gostiju; poslovni subjekti koji se za vrijeme školskih praznika koriste školama, domovima i sličnim

*Data on sales and buying out of products in agriculture, forestry and fishing cover the value of sale of products from own production of enterprises and cooperatives as well as the buying out of value of products from individual holdings, performed by authorized agencies for further processing or sale.*

## CATERING

### Sources of data and coverage

*Data on realized turnover in catering by month are estimated on the basis of estimate of trend of turnover, until the results of the regular quarterly survey in catering are received. Monthly estimates are corrected on the basis of received results.*

*Data on turnover in catering are collected through quarterly survey survey for enterprises in catering, by groups of services. The annual survey collects data on enterprises in catering and entrepreneurs. Monthly data do not include turnover of entrepreneurs.*

### Definitions

*Presented turnover in catering presents the value of performed catering services including the services of accommodation, food, pouring beverages, as well as other services usually performed in catering.*

## TOURISM

### Sources of data and coverage

*Data about arrivals of tourists and overnight stays are collected through regular monthly survey (form TU-11). The reports are compiled on the basis of records in the guest books. The survey is conducted on the basis of full coverage.*

### Definitions

*Reporting units are all business subjects (enterprises/trade companies, cooperatives, institutions, etc.) and their parts performing activity of providing accommodation services to tourists; health institutions for their objects attended by persons for medical rehabilitation (persons pay by themselves for the stay); business subjects and their parts dealing with intermediation in providing accommodation services (travel agencies); business subjects dealing with intermediation in accommodation of guests in village houses; tourists unions and other competent bodies for private rooms, apartments or houses directly rented by tourists; business subjects and their parts for their resorts; business subjects which founded or take care and monitor the mountain lodgings; military institutions for*

objektima kao privremenim smještajnim kapacitetima; Istraživanjem su obuhvaćene sve pravne osobe i njihovi djelovi te fizičke osobe koje iznajmljuju smještajne objekte turistima (komercijalni objekti).

**Turist** je svaka osoba koja u mjestu van svog prebivališta provede najmanje jednu noć u ugostiteljskom ili drugom objektu za smještaj turista radi odmora ili rekreacije, zdravlja, studija, sporta, religije, porodice, poslova, javnih misija ili skupova.

U turiste se ne uključuju migranti, pogranični radnici, diplomati, članovi vojnih snaga na redovnim zadacima, izbjeglice, itd.

**Prebivalište** je mjesto u kojem se osoba nastanila s namjerom da u njemu stalno živi. Turist je registrovan u

svakom mjestu ili objektu u kojem boravi i zbog toga, u slučaju promjene mjesta ili objekta, dolazi do njegova ponovnog iskazivanja, a time i do dvostrukosti u podacima. Prema tome, statistika evidentira broj dolazaka turista, a ne broj turista.

## SAOBRAĆAJ, SKLADIŠTENJE I VEZE

Podaci o prevozu putnika i robe u unutrašnjem, pomorskom, vazdušnom i drumskom saobraćaju odnose se na prevoz koji obavljaju saobraćajna preduzeća registrovana u saobraćajnoj djelatnosti, bez obzira da li prevoz obavljaju unutar ili van granica naše zemlje za račun domaćeg ili inostranog korisnika.

Podaci se prikupljaju redovnim mjesečnim i godišnjim statističkim izvještajima saobraćajnih preduzeća.

### Željeznički saobraćaj

Prevezeni putnici u unutrašnjem saobraćaju obuhvataju otputovala putnike, otputovala putnike u inostranstvo, prispjele iz inostranstva i putnike u tranzitu. Prevezeni teret obuhvata utovarenu robu u unutrašnjem i u međunarodnom saobraćaju: uvoz, izvoz i tranzit.

### Promet na aerodromima

Podaci o prometu putnika i robe na aerodromima dobijeni su na osnovu redovnih mjesečnih i godišnjih izvještaja preduzeća za aerodromske usluge i obuhvataju kompletan promet, odnosno i domaće i strane avione.

### Drumski saobraćaj

Podaci o prevozu odnose se na rad domaćih preduzeća drumskog saobraćaja u unutrašnjem i međunarodnom prevozu putnika i tereta.

### Gradski saobraćaj

Obuhvaćen je prevoz putnika koji obavljaju saobraćajne organizacije u gradskom i prigradskom saobraćaju

*their catering objects for accommodation of guests; business subjects which are during school holidays used by schools, hostels and similar objects as temporary placing capacities. The survey covers all legal persons and their parts as well as persons renting accommodation to tourists (commercial objects).*

***Tourist** is a person who spends at least one night in an accommodation facility or some other object for accommodation of tourists, in a place other than his/her place of permanent residence for the reason of vacation or recreation, health, studies, sports, religion, family, business, public missions or meetings. Tourists do not include migrants, border workers, diplomats, members of military force in the regular duty, refugees, etc.*

***Residence** is the place where the person is settled intending to permanently live in it. Tourist is registered in a place or object where it resides and due to it, in the case of change of place or object, the double reporting may*

*appear, which may lead to the double data. There the statistics records the arrivals of tourists, and not the number of tourists.*

## TRANSPORT, STORAGE AND COMMUNICATIONS

*Data on the transport of passengers and goods in the internal, marine, air and road transport refer to the transport performed by transport enterprises registered in transport activities, no matter whether the transport is done inside or outside the borders of our country on the account of domestic or foreign user.*

*Data are collected through regular monthly or annual statistical surveys from reports of transport enterprises.*

### Railway transport

*Passengers transported in domestic transport include departed passengers, passengers departed abroad, passengers who arrived from abroad and passengers in transit. Transported cargo includes loaded goods in domestic and international transport: import, export and transit.*

### Traffic in airports

*Data about traffic of passengers and goods in airports are received on the basis of regular monthly and annual reports of enterprises for airport services and they cover complete traffic, i.e., both domestic and foreign airplanes.*

### Road transport

*Data about transport refer to the work of domestic enterprises of road transport in internal and international transport of passengers and cargo.*



**Poštanski saobraćaj**

Poštanski saobraćaj obuhvata: Poštanske usluge, telegrafске i telefonske usluge. Poštanske aktivnosti obuhvataju sljedeće usluge: prenos pismonosnih i paketnih pošiljki i usluge platnog prometa.

Pismonosne pošiljke odnose se na otpremljena pisma, dopisnice, novine i časopise, preporuke i vrijednosna pisma u unutrašnjem prometu, a u međunarodnom prometu i u prispijeću. Transit nije obuhvaćen.

Platni promet obuhvata uplate poštanskim uputnicama, po žiro i tekućim računima i računskim knjižicama, isplate međunarodnim poštanskim uputnicama i žiro i tekućim računima i računskim i invalidskim knjižicama.

Telegrafске usluge obuhvataju otpremu telegrama u unutrašnjem prometu i prometu sa inostranstvom, uključujući i tranzit.

Telefonske usluge obuhvataju fiksnu i mobilnu mrežu i prikazuju se u onim jedinicama koje se i koriste u tehničkom smislu-minutima.

**MONETARNI AGREGATI****Izvori podataka**

Za izradu monetarne statistike su: bilansi Centralne banke Crne Gore i bilansi banaka. Banke dostavljaju podatke u skladu sa Odlukom o izvještajima koje banke dostavljaju Centralnoj banci Crne Gore.

Za prikupljanje i obradu podataka monetarne statistike nadležna ja Centralna banka Crne Gore.

**Definicije**

**Monetarnu bazu (M0)** čine depoziti banaka kod CBCG (obračunski račun banaka i izdvojena obavezna rezerva - do januara 2008. bez dijela koji banke drže u državnim zapisima ) i procijenjeni iznos gotovog novca u opticaju.

**Monetarni agregat (M1)** čine M0, depoziti po viđenju nebankarskog sektora kod banaka i CBCG, u eurima i drugim valutama, isključujući depozite centralne Vlade.

**Monetarni agregat (M11)** čini M11 uvećan za depozite centralne Vlade po viđenju, u eurima i drugim valutama.

**Monetarni agregat (M2)** čine M1 i oročeni depoziti nebankarskog sektora kod banaka i CBCG, u eurima i drugim valutama, isključujući depozite centralne Vlade.

**Monetarni agregat (M21)** čini M11 uvećan za oročene depozite (uključujući depozite centralne Vlade), u eurima i drugim valutama.

**Local transport**

*It includes the transport of passengers performed by transport organizations in local and commuter services.*

**Postal communications**

*Postal communications include: Postal services, telegraphic and telephone services. Postal activities include the following services: transport of letter mail and services of ballance of payments.*

*Letter mail refer to only to mail sent, postal cards, newspaper and magazines, registered and value letters in domestic transport, as well as for the receiving in the international communications. The transit is not included.*

*Balance of payment includes payments made by postal money orders, by giro and current accounts and account booklets, payments by international postal money orders and giro and current accounts and account and disability booklets.*

*Telegraph services refer to sending of telegrams in the country as well as to foreign countries, including the transit.*

*Telephone services include fixed and mobile networks and are presented in the units used in the technical sense -minutes.*

**MONETARY AGGREGATS****The sources of data**

*For preparation of monetary statistics are: the balance sheets of the Central Bank of Montenegro and of banks. Banks submit their data according to the Decision on reports that banks submit to the Central Bank of Montenegro.*

*The Central Bank of Montenegro is responsible for the collection and processing of the data of monetary statistics.*

**Definitions**

**Monetary base (M0)** comprises banks' deposits in the CBM -Payment Operations (banks' giro accounts and allocated reserve requirement until January 2008, excluding the part which banks keep as treasury bills) and the estimated amount of cash in circulation.

**Monetary aggregate (M1)** comprises M0, demand deposits by the non-banking sector with banks and the CBM, in EUR and other currencies, excluding deposits of the central Government.

**Monetary aggregate (M11)** comprises M1 plus the central Government's demand deposits in EUR and other currencies.

**Monetary aggregate (M2)** includes M1 and non-banking sector's time deposits with banks and CBM, in EUR and other currencies, excluding deposits of the central Government.

**Monetary aggregate (M12)** comprises M11 plus the central Government's time deposits in EUR and other currencies.

**Depoziti stanovništva** – u tabeli je prikazano stanje ukupnih depozita fizičkih lica kod banaka na kraju perioda i njihova struktura po ročnosti.

**Deposits by households** – the table present the balance of total deposits of individuals by households at the end of period and their structure by time.

## PLATNI BILANS CRNE GORE

Bilans plaćanja sastavlja se u skladu sa metodologijom koju je preporučio Međunarodni monetarni fond (Balance of payments Manual, fifth edition, 1993). Izvori podataka su: Republička uprava carina Crne Gore, MONSTAT, Elektroprivreda Crne Gore, Ministarstvo finansija, poslovne banke i CBCG. Bilans plaćanja se iskazuje u eurima. Preračunavanje vrijednosti transakcija iz originalnih valuta u izvještajnu valutu obavlja se: primjenom srednjih kurseva CBCG na dan transakcije, primjenom mjesečnih i godišnjih srednjih prosječnih kurseva CBCG, primjenom srednjeg dnevnog kursa na kraju perioda kod procjene transakcija čija se razlika stanja prati.

Početkom 2005. godine izvršena je revizija podataka koji se odnose na 2004. godinu. Naime, tokom 2004. godine postalo je tehnički moguće pratiti robne transakcije između Crne Gore i Srbije na osnovu podataka Republičke uprave carina Crne Gore, odnosno carinskih deklaracija. Do 2004. godine izvor za praćenje ovih tokova su bili jedino podaci poslovnih banaka o ostvarenom platnom prometu sa inostranstvom, odnosno ITRS.

Izvor podataka o spoljnoj trgovini od 2005. godine je MONSTAT. U 2008. godini izvršena je revizija podataka o spoljnoj trgovini za 2007. godinu u skladu sa promjenom metodologije koju koristi MONSTAT. Podaci o spoljnoj trgovini u platnom bilansu Crne Gore za 2007. i 2008. godinu prikazani su po opštem sistemu trgovine. CBCG vrši prilagođavanje podataka dobijenih od MONSTAT-a za potrebe platnog bilansa u skladu sa metodologijom MMF-a (Balance of Payments Manual, Fifth edition, IMF, 1993).

Kod evidencije transportnih usluga koriste se podaci banaka o ostvarenom platnom prometu sa inostranstvom. Prihodi od **putovanja** obuhvataju procijenjene prihode od turizma, koji se dopunjavaju sa podacima o pruženim zdravstveno-rekreativnim uslugama i potrošnjom u cilju školovanja. Do prihoda od turizma se dolazi na osnovu broja noćenja (podatak MONSTAT-a) i procijenjene prosječne dnevne potrošnje. Početkom 2006. godine korigovan je model za procjenu prihoda od turizma, korekcija se odnosi na 2003. i 2004. godinu. Podaci o rashodima za turizam dobijaju se na osnovu ostvarenog platnog prometa sa inostranstvom.

Finansijske usluge (usluge osiguranje i reosiguranja, zastupnička i posrednička provizija i provizija i troškovi u bankarskom poslovanju) se prate na osnovu statistike platnog prometa sa inostranstvom. Ostale usluge obuhvataju građevinske usluge, ptt i komunikacijske usluge, usluge osiguranja, kompjuterske i informacione

## THE BALANCE OF PAYMENT OF MONTENEGRO

The balance of payments is prepared according to the methodology prescribed by the International Monetary Fund (Balance of Payment, 1993). The sources of data are: Custom Administration of Montenegro, MONSTAT, Montenegrin Electric Enterprise, the Ministry of Finance, commercial banks, and the Central Bank of Montenegro. The balance of payments is presented in EUR. Recalculation of the transaction values from the original currency to the reporting currency is performed by: using the mean exchange rate from the Central Bank of Montenegro and at the end of the period with evaluation transactions whose change is monitored using daily mean exchange rate.

The revision of data referring to 2004 was done in the beginning of 2005. Namely, it was technically possible in 2004 to follow transaction of goods between Montenegro and Serbia on the basis of data from Customs Administration of Montenegro i.e., the customs declarations. Until 2004 the source for viewing these currents was only data of banks about the achieved balance of payments with foreign countries, i.e., ITRS.

Since 2005, the source of data about external trade is MONSTAT. In 2008, accomplished revision data from external trade for 2007 with methodology which use MONSTAT. CBM makes adjustments of data received from MONSTAT in order to harmonize them with the IMF methodology (Balance of Payments Manual, Fifth edition, IMF, 1993).

The registering of transportation services uses banks' data on performed international payment operations.

Incomes from **travelling** include estimated incomes from tourism, which are supplemented by data on provided health- recreation services and expenditures for education. Data on expenditures in tourism are obtained on the basis of the number of tourist overnight stays (data from MONSTAT) and estimated average daily consumption.

The model for estimation of incomes from tourism was modified in the beginning of 2006, and the correction refers to 2003 and 2004. Data on expenditures in tourism are obtained on the basis of international payment operations.

Financial services (insurance and reinsurance, representative and mediation commission fees, and commission fees and expenses for banking operations) are covered on the basis of foreign payment operations statistics. Other services include investment work in foreign countries, PTT and communication services, forwarding services, expenses for the maintenance of

usluge, autorska prava i honorare od izdavanja dozvola i ostale poslovne usluge. Podaci o njima se dobijaju iz statistike platnog prometa sa inostranstvom, a na osnovu izvještaja banaka.

Račun dohotka uključuje podatke iz statistike platnog prometa sa inostranstvom o kompenzacijama, zaposlenima, plaćanjima i naplatama po osnovu kamata, plaćenim i naplaćenim dividendama. Izvor podataka su izvještaji banaka i CBCG.

Tekući transferi obuhvataju podatke o transferima sektora vlade i ostalih sektora koji se dobijaju iz statistike platnog prometa sa inostranstvom.

Direktne i portfolio investicije prate se na osnovu podataka statistike platnog prometa sa inostranstvom i sprovedenih anketa. Ostale investicije koje obuhvataju podatke o kreditima, trgovinskim kreditima, gotovini i depozitima se dobijaju iz statistike platnog prometa sa inostranstvom.

Rezerve Centralne banke Crne Gore obuhvataju sredstva komercijalnih banaka deponovana kod ino banaka, sredstva Centralne banke deponovana kod ino banaka, sredstva u trezoru CBCG i rezervne pozicije kod MMF-a. Izvor podataka je CBCG (monetarna statistika).

*representative offices, computer and information technology services, author's fee, and fee for license issuance, as well as other business services. The data is obtained from foreign payment operations statistics and banks' reports.*

*Income statement comprises data from foreign payment operations statistics on compensations to employees, payments, and charged dividends. The source of data is banks' reports.*

*Current transfers include data about transfers of Government sector and other sectors received from balance of payment with foreign countries.*

*Direct and portfolio investments are followed on the basis of data of international payment operations statistics and conducted surveys. Other investments include data about loans, trade loans, cash and deposits and are obtained from the balance of payment statistics with foreign countries.*

*The Central Bank of Montenegro's reserves comprise commercial banks' fund deposited in international bank and the CBM funds deposited in foreign banks, funds in the CBM treasury and reserve positions in IMF. The source of data is CBM (monetary statistics).*

REDAKCIJA / EDITORIAL BOARD :

RAJKO LAKOVIĆ, rukovodilac / coordinator  
Mr. Gordana Radojević, Gojko Dragaš,  
Branka Šušić – Radovanović,  
Snežana Remiković, Bojana Radević-Radojević

Tehnički urednik / *Editor* : Radmila Šišević  
Grafički prikazi / *Graphs* : Radmila Šišević  
Prevod / *Translated by*: Irena Mihailović

IZDAJE I ŠTAMPA: Zavod za statistiku Crne Gore – MONSTAT, Podgorica, IV Proleterske br. 2  
Prilikom korišćenja navesti izvor – preporučuje se skraćenica – MSP, br. - /2008

ODGOVARA: Radomir Đurović, direktor.

Izlazi 25-og u mjesecu. Tiraž 150 primjeraka. Prodajno odjeljenje: Tel: +382 20 230-773

*PUBLISHED AND PRINTED BY: Statistical Office of Montenegro – MONSTAT, Podgorica, IV Proleterske no. 2*

*Data using is subject to quoting source – abbreviation recommended: MSR, no. -/2008*

*RESPONSIBLE: Radomir Đurović, Director.*

*Issued on 25<sup>th</sup> in a month. Circulation 150 copies. Department of sales: +382 20 230-773*

E-mail: [contact@monstat.org](mailto:contact@monstat.org) Web Site: [www.monstat.org](http://www.monstat.org)